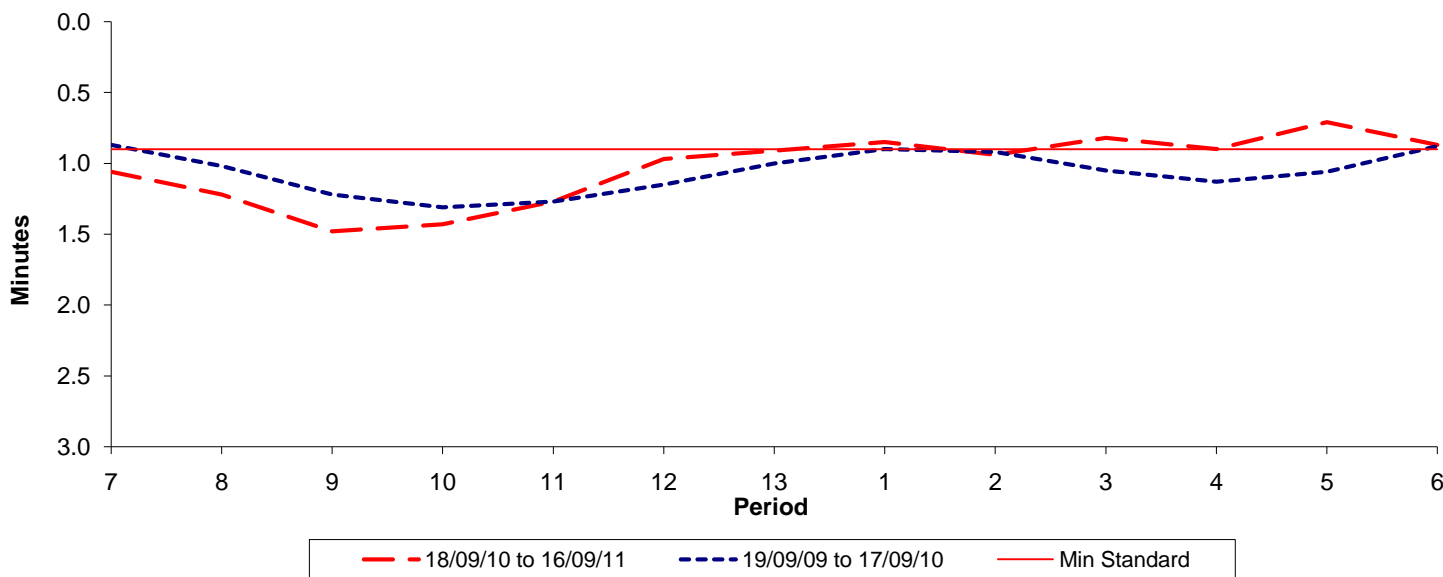




Reliability Performance (High Frequency)

Excess Waiting Time (minutes)

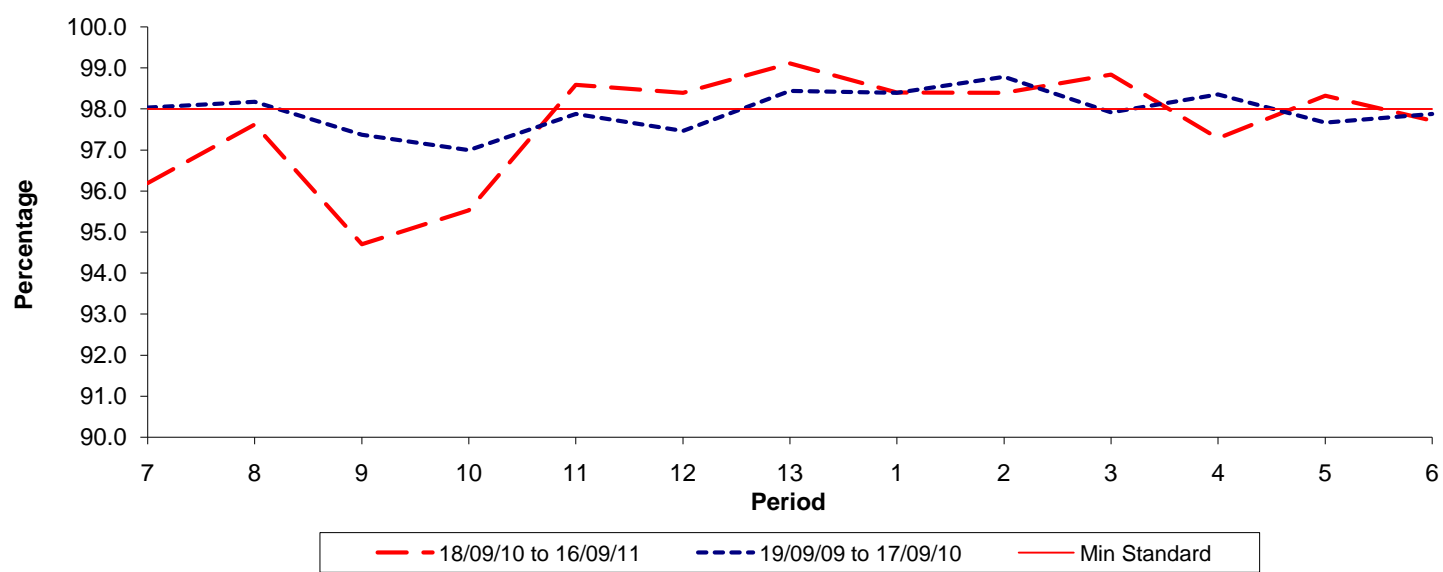


Date Range / Period	7	8	9	10	11	12	13	1	2	3	4	5	6
18/09/10 to 16/09/11	1.06	1.22	1.48	1.43	1.27	0.97	0.91	0.85	0.94	0.82	0.90	0.71	0.87
19/09/09 to 17/09/10	0.87	1.02	1.22	1.31	1.27	1.15	1.00	0.90	0.92	1.05	1.13	1.06	0.88
Min Standard	0.90	0.90	0.90	0.90	0.90	0.90	0.90	0.90	0.90	0.90	0.90	0.90	0.90

Excess Waiting Time figures are based on 12 weeks data

Kilometre Performance

% Kilometres Operated



Date Range / Period	7	8	9	10	11	12	13	1	2	3	4	5	6
18/09/10 to 16/09/11	96.19	97.62	94.70	95.53	98.59	98.39	99.11	98.40	98.39	98.84	97.28	98.32	97.71
19/09/09 to 17/09/10	98.03	98.17	97.37	97.00	97.88	97.47	98.44	98.39	98.78	97.92	98.35	97.67	97.88
Min Standard	98.00	98.00	98.00	98.00	98.00	98.00	98.00	98.00	98.00	98.00	98.00	98.00	98.00

Kilometre figures are based on 4 weeks data