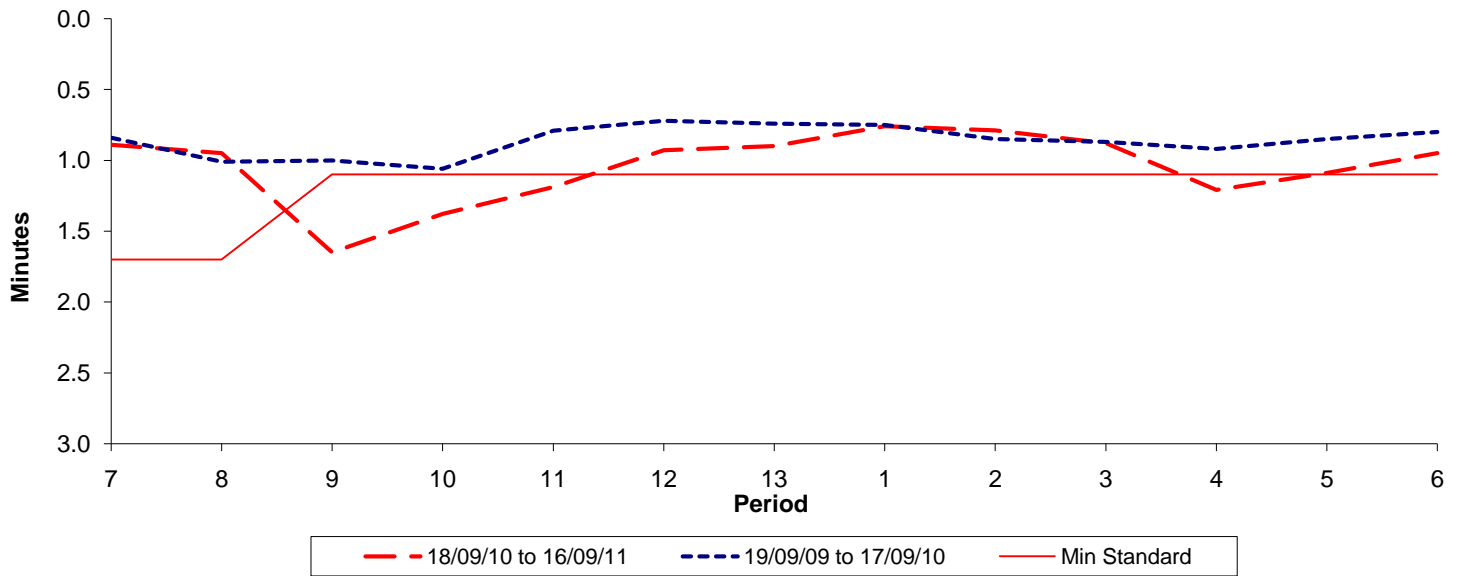




**Reliability Performance ( High Frequency )**

**Excess Waiting Time (minutes)**

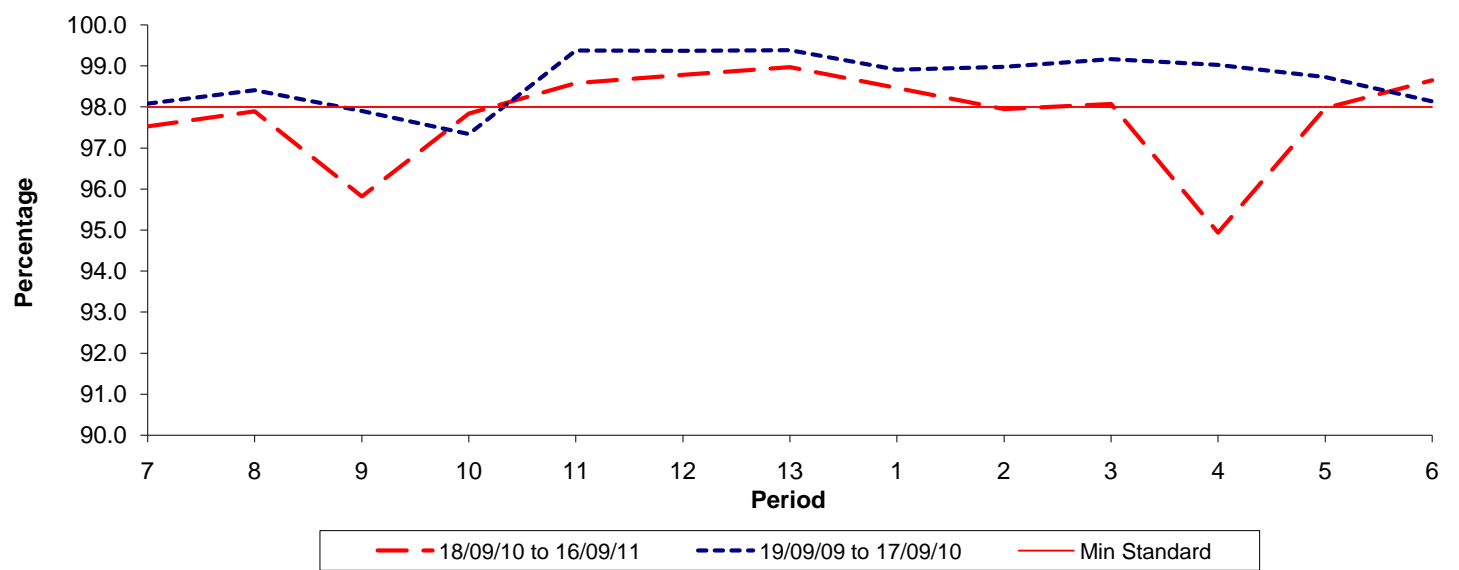


Date Range / Period	7	8	9	10	11	12	13	1	2	3	4	5	6
18/09/10 to 16/09/11	0.89	0.95	1.65	1.38	1.19	0.93	0.90	0.76	0.79	0.88	1.21	1.09	0.95
19/09/09 to 17/09/10	0.84	1.01	1.00	1.06	0.79	0.72	0.74	0.75	0.85	0.87	0.92	0.85	0.80
Min Standard	1.70	1.70	1.10	1.10	1.10	1.10	1.10	1.10	1.10	1.10	1.10	1.10	1.10

Excess Waiting Time figures are based on 12 weeks data

**Kilometre Performance**

**% Kilometres Operated**



Date Range / Period	7	8	9	10	11	12	13	1	2	3	4	5	6
18/09/10 to 16/09/11	97.52	97.90	95.82	97.84	98.58	98.79	98.97	98.46	97.95	98.07	94.94	97.97	98.65
19/09/09 to 17/09/10	98.09	98.41	97.90	97.34	99.38	99.37	99.39	98.91	98.98	99.17	99.03	98.73	98.14
Min Standard	98.00	98.00	98.00	98.00	98.00	98.00	98.00	98.00	98.00	98.00	98.00	98.00	98.00

Kilometre figures are based on 4 weeks data