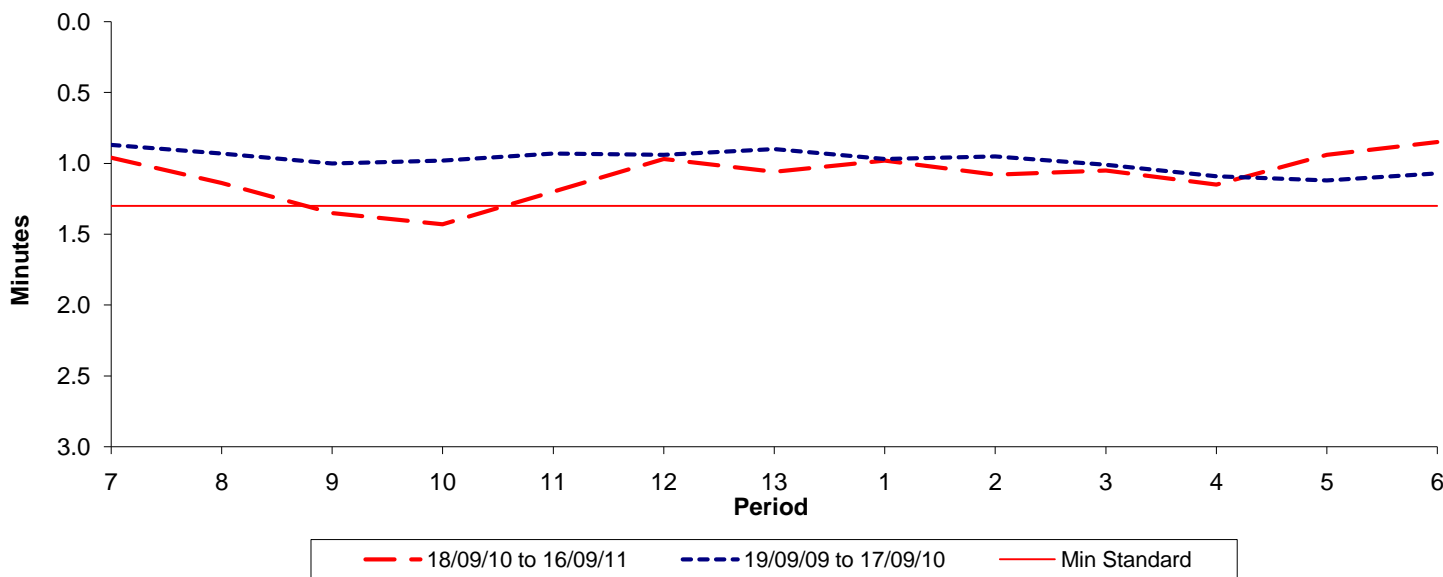




Reliability Performance (High Frequency)

Excess Waiting Time (minutes)

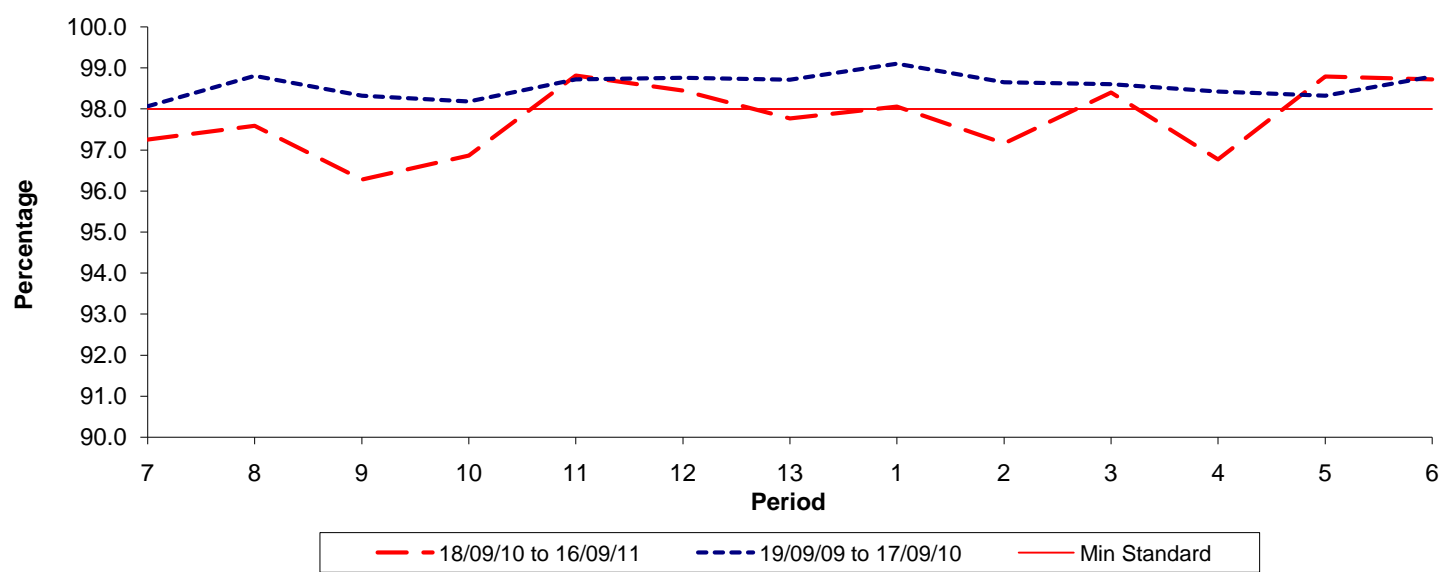


Date Range / Period	7	8	9	10	11	12	13	1	2	3	4	5	6
18/09/10 to 16/09/11	0.96	1.14	1.35	1.43	1.20	0.97	1.06	0.98	1.08	1.05	1.15	0.94	0.85
19/09/09 to 17/09/10	0.87	0.93	1.00	0.98	0.93	0.94	0.90	0.97	0.95	1.01	1.09	1.12	1.07
Min Standard	1.30	1.30	1.30	1.30	1.30	1.30	1.30	1.30	1.30	1.30	1.30	1.30	1.30

Excess Waiting Time figures are based on 12 weeks data

Kilometre Performance

% Kilometres Operated



Date Range / Period	7	8	9	10	11	12	13	1	2	3	4	5	6
18/09/10 to 16/09/11	97.26	97.59	96.28	96.87	98.81	98.45	97.77	98.06	97.16	98.40	96.77	98.79	98.72
19/09/09 to 17/09/10	98.06	98.80	98.32	98.18	98.72	98.76	98.71	99.10	98.65	98.60	98.42	98.32	98.79
Min Standard	98.00	98.00	98.00	98.00	98.00	98.00	98.00	98.00	98.00	98.00	98.00	98.00	98.00

Kilometre figures are based on 4 weeks data