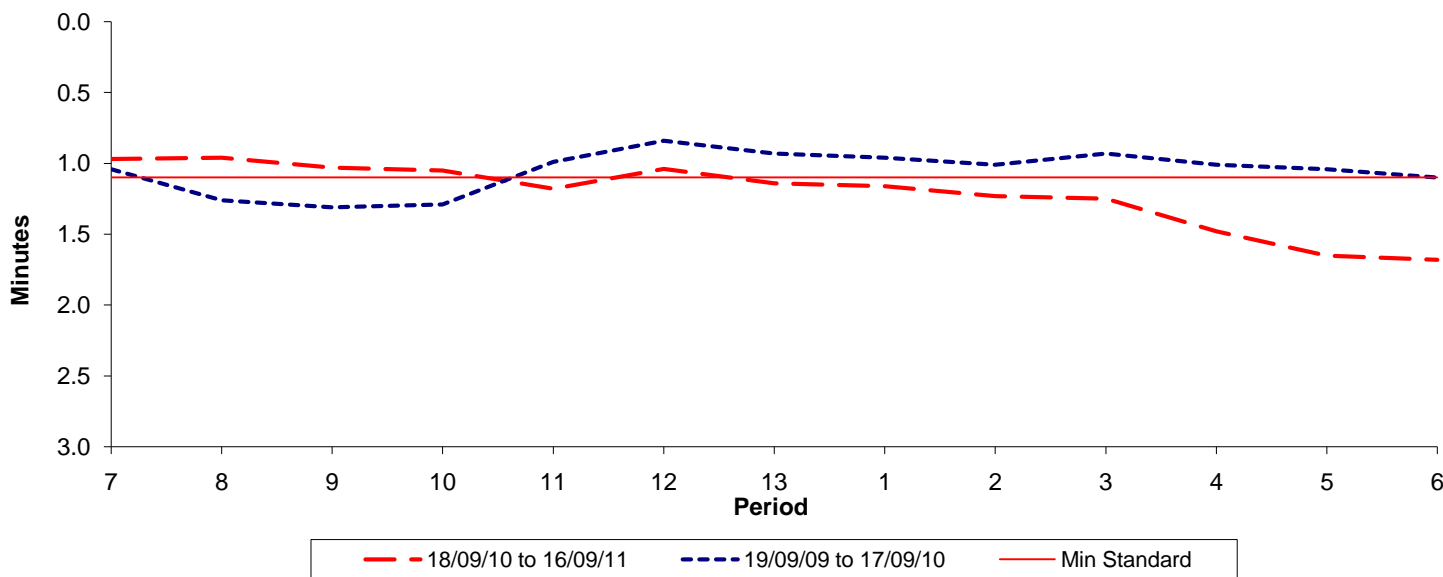




Reliability Performance (High Frequency)

Excess Waiting Time (minutes)

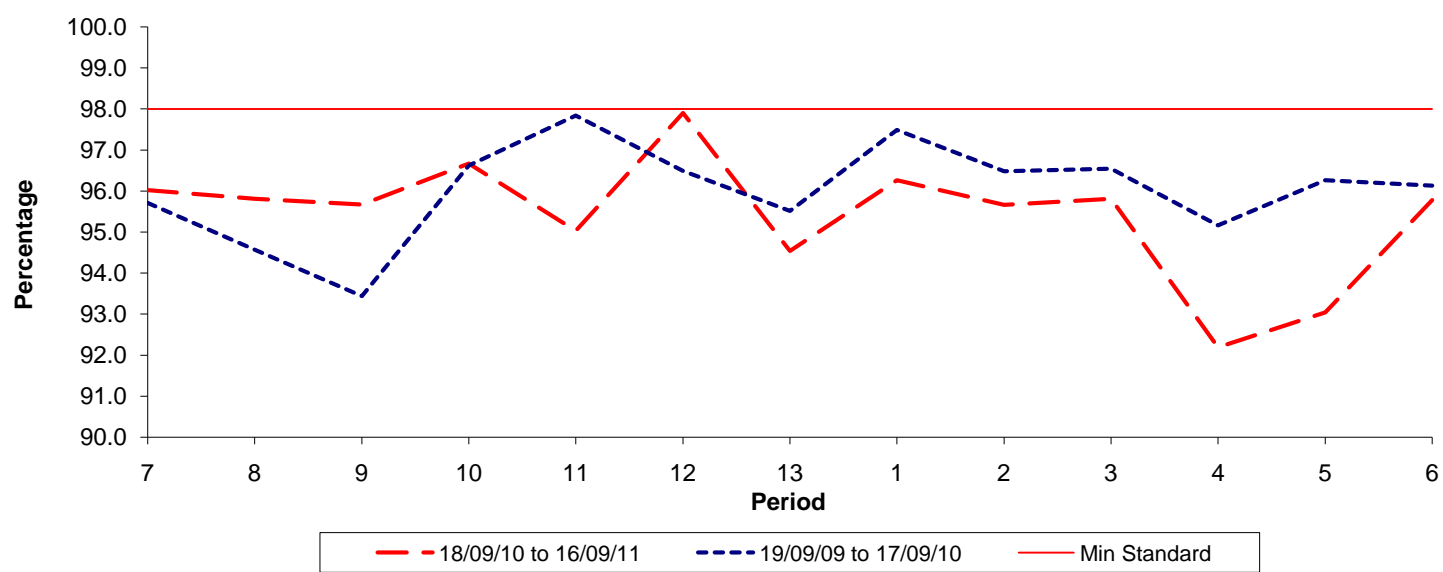


Date Range / Period	7	8	9	10	11	12	13	1	2	3	4	5	6
18/09/10 to 16/09/11	0.97	0.96	1.03	1.05	1.18	1.04	1.14	1.16	1.23	1.25	1.48	1.65	1.68
19/09/09 to 17/09/10	1.04	1.26	1.31	1.29	0.99	0.84	0.93	0.96	1.01	0.93	1.01	1.04	1.10
Min Standard	1.10	1.10	1.10	1.10	1.10	1.10	1.10	1.10	1.10	1.10	1.10	1.10	1.10

Excess Waiting Time figures are based on 12 weeks data

Kilometre Performance

% Kilometres Operated



Date Range / Period	7	8	9	10	11	12	13	1	2	3	4	5	6
18/09/10 to 16/09/11	96.02	95.81	95.67	96.67	95.03	97.90	94.54	96.26	95.66	95.81	92.19	93.04	95.78
19/09/09 to 17/09/10	95.71	94.57	93.44	96.62	97.84	96.49	95.52	97.49	96.48	96.55	95.16	96.27	96.13
Min Standard	98.00	98.00	98.00	98.00	98.00	98.00	98.00	98.00	98.00	98.00	98.00	98.00	98.00

Kilometre figures are based on 4 weeks data