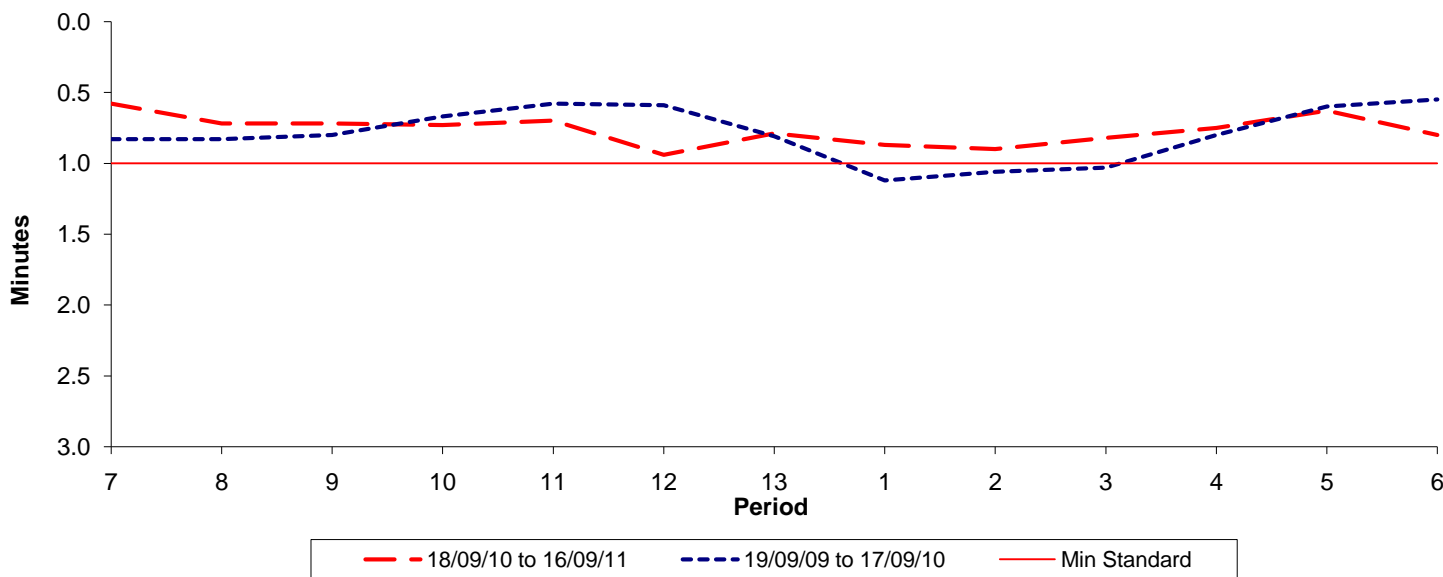




Reliability Performance (High Frequency)

Excess Waiting Time (minutes)

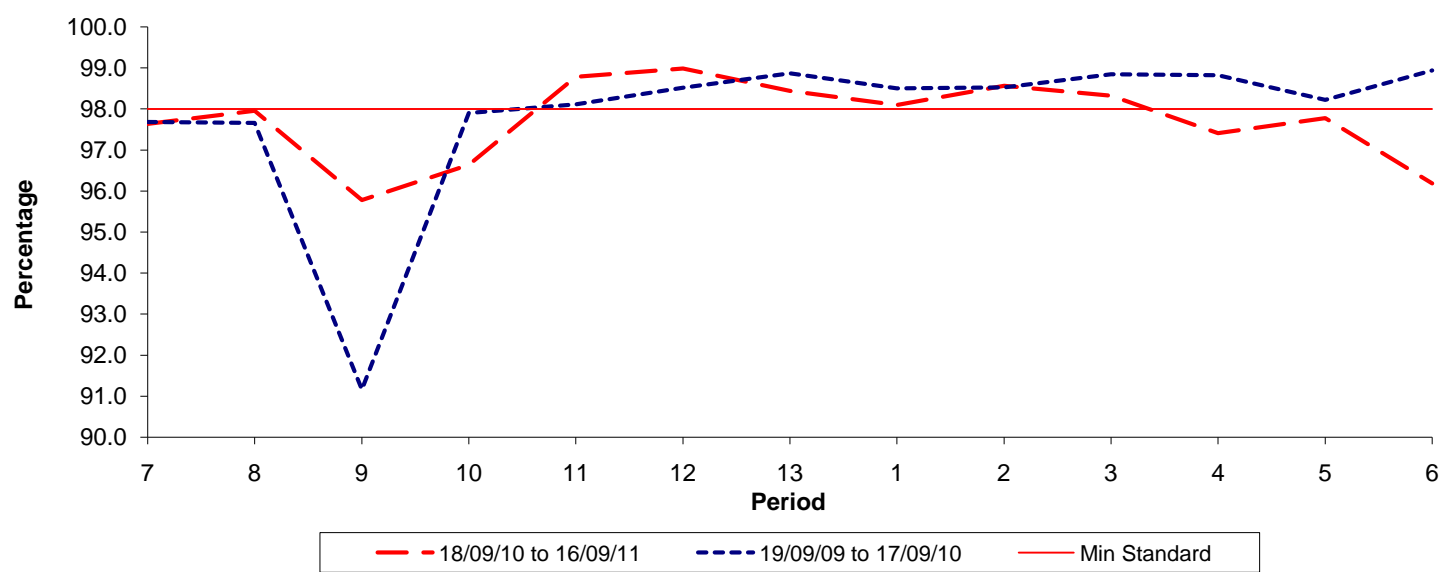


Date Range / Period	7	8	9	10	11	12	13	1	2	3	4	5	6
18/09/10 to 16/09/11	0.58	0.72	0.72	0.73	0.70	0.94	0.79	0.87	0.90	0.82	0.75	0.63	0.80
19/09/09 to 17/09/10	0.83	0.83	0.80	0.67	0.58	0.59	0.81	1.12	1.06	1.03	0.80	0.60	0.55
Min Standard	1.00	1.00	1.00	1.00	1.00	1.00	1.00	1.00	1.00	1.00	1.00	1.00	1.00

Excess Waiting Time figures are based on 12 weeks data

Kilometre Performance

% Kilometres Operated



Date Range / Period	7	8	9	10	11	12	13	1	2	3	4	5	6
18/09/10 to 16/09/11	97.64	97.96	95.78	96.64	98.79	98.99	98.44	98.10	98.57	98.33	97.41	97.78	96.19
19/09/09 to 17/09/10	97.68	97.66	91.16	97.90	98.11	98.52	98.87	98.50	98.53	98.85	98.82	98.22	98.94
Min Standard	98.00	98.00	98.00	98.00	98.00	98.00	98.00	98.00	98.00	98.00	98.00	98.00	98.00

Kilometre figures are based on 4 weeks data