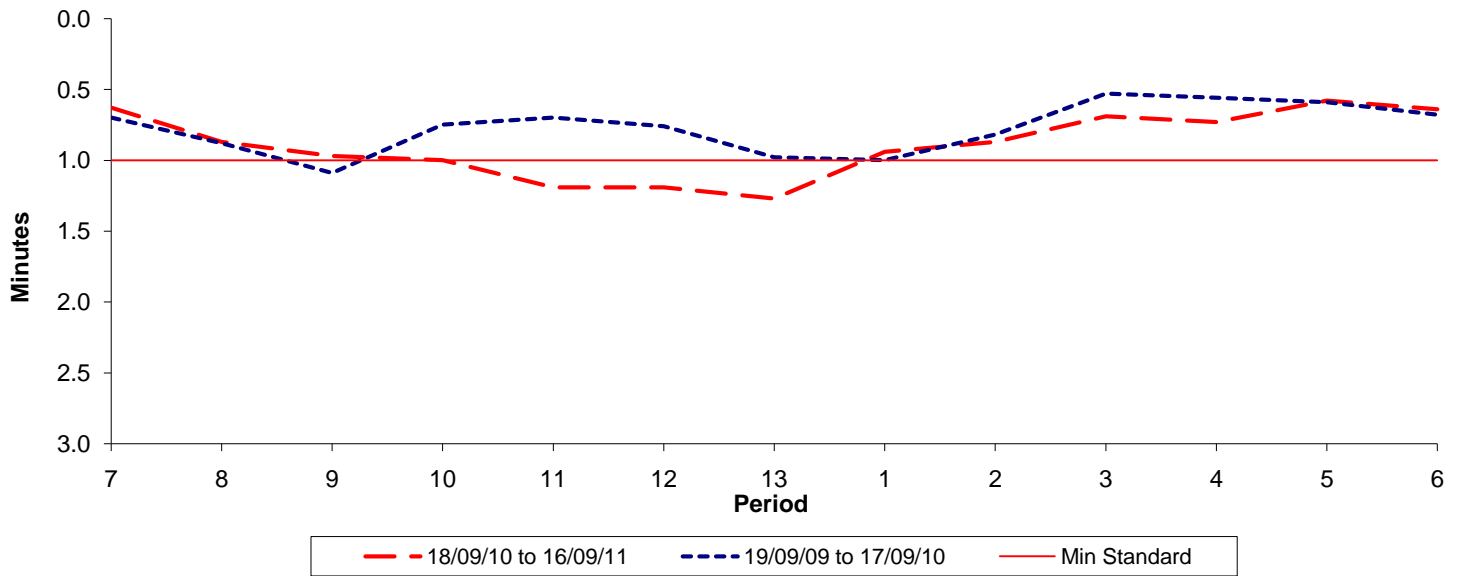




Reliability Performance (High Frequency)

Excess Waiting Time (minutes)

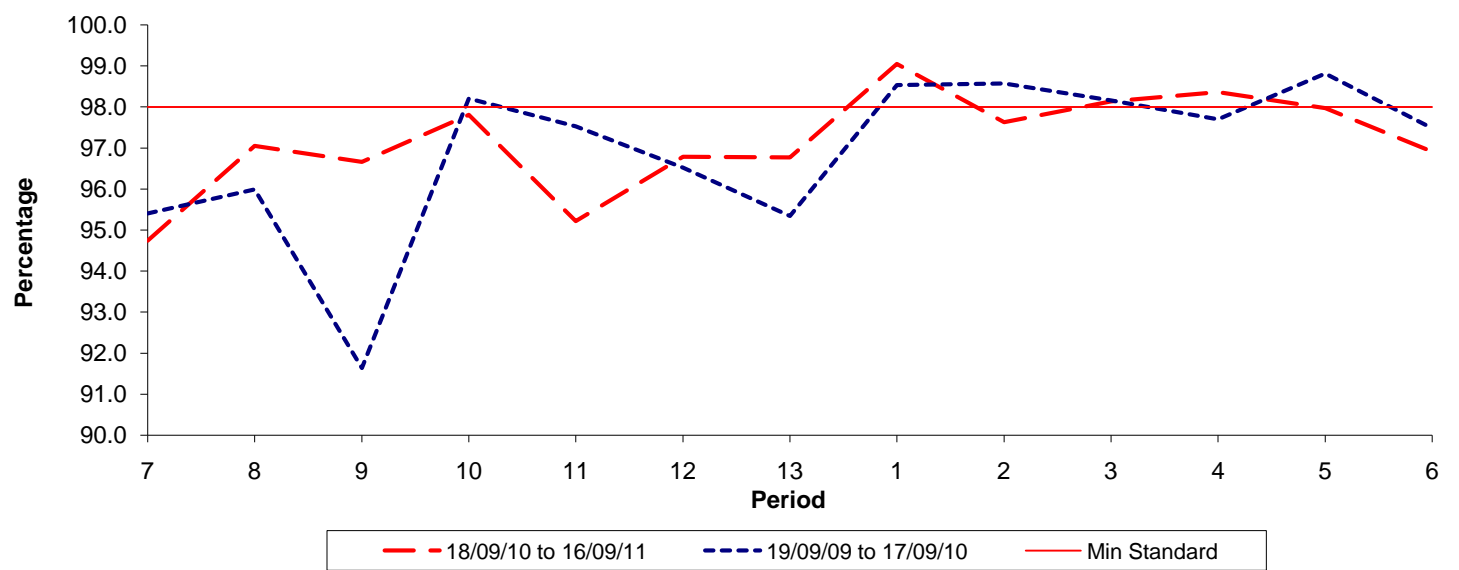


Date Range / Period	7	8	9	10	11	12	13	1	2	3	4	5	6
18/09/10 to 16/09/11	0.63	0.87	0.97	1.00	1.19	1.19	1.27	0.94	0.87	0.69	0.73	0.58	0.64
19/09/09 to 17/09/10	0.70	0.88	1.09	0.75	0.70	0.76	0.98	1.00	0.82	0.53	0.56	0.59	0.68
Min Standard	1.00	1.00	1.00	1.00	1.00	1.00	1.00	1.00	1.00	1.00	1.00	1.00	1.00

Excess Waiting Time figures are based on 12 weeks data

Kilometre Performance

% Kilometres Operated



Date Range / Period	7	8	9	10	11	12	13	1	2	3	4	5	6
18/09/10 to 16/09/11	94.74	97.05	96.66	97.81	95.22	96.78	96.77	99.05	97.63	98.14	98.36	97.97	96.91
19/09/09 to 17/09/10	95.41	95.99	91.63	98.21	97.53	96.52	95.34	98.54	98.58	98.16	97.70	98.82	97.48
Min Standard	98.00	98.00	98.00	98.00	98.00	98.00	98.00	98.00	98.00	98.00	98.00	98.00	98.00

Kilometre figures are based on 4 weeks data