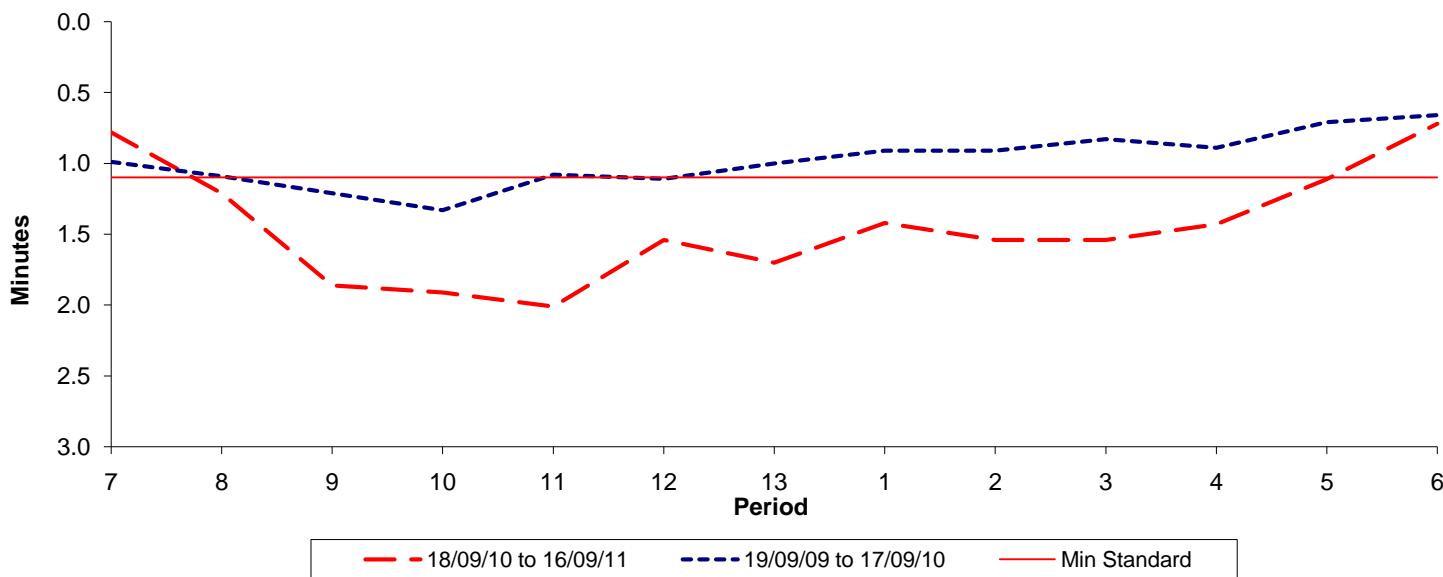




Reliability Performance (High Frequency)

Excess Waiting Time (minutes)

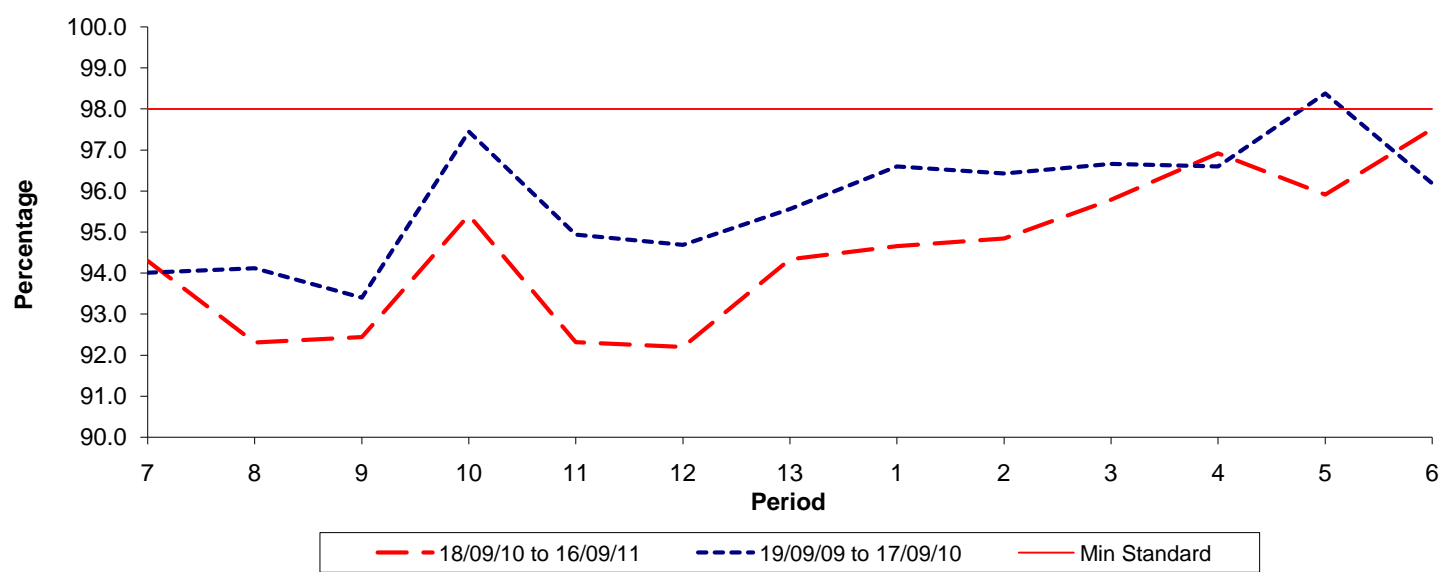


Date Range / Period	7	8	9	10	11	12	13	1	2	3	4	5	6
18/09/10 to 16/09/11	0.78	1.21	1.86	1.91	2.01	1.54	1.70	1.42	1.54	1.54	1.43	1.11	0.72
19/09/09 to 17/09/10	0.99	1.09	1.21	1.33	1.08	1.11	1.00	0.91	0.91	0.83	0.89	0.71	0.66
Min Standard	1.10	1.10	1.10	1.10	1.10	1.10	1.10	1.10	1.10	1.10	1.10	1.10	1.10

Excess Waiting Time figures are based on 12 weeks data

Kilometre Performance

% Kilometres Operated



Date Range / Period	7	8	9	10	11	12	13	1	2	3	4	5	6
18/09/10 to 16/09/11	94.30	92.31	92.44	95.41	92.32	92.20	94.34	94.66	94.84	95.79	96.92	95.91	97.51
19/09/09 to 17/09/10	94.01	94.12	93.40	97.45	94.94	94.69	95.56	96.60	96.43	96.66	96.60	98.38	96.19
Min Standard	98.00	98.00	98.00	98.00	98.00	98.00	98.00	98.00	98.00	98.00	98.00	98.00	98.00

Kilometre figures are based on 4 weeks data