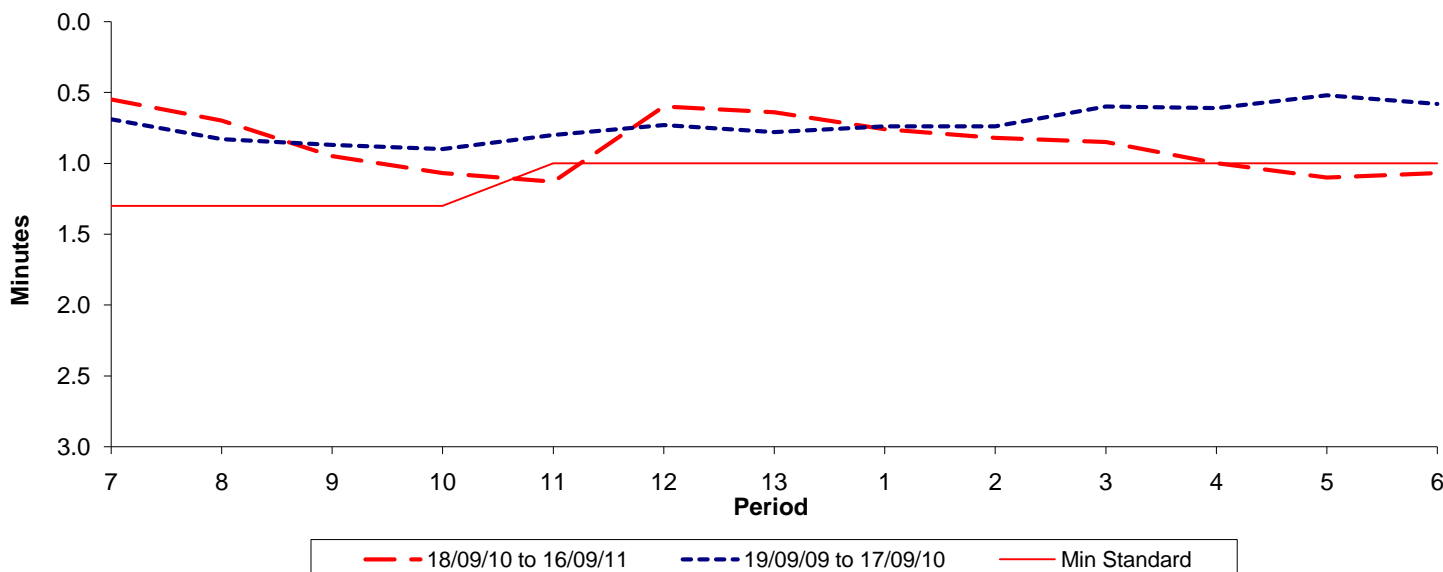




Reliability Performance (High Frequency)

Excess Waiting Time (minutes)

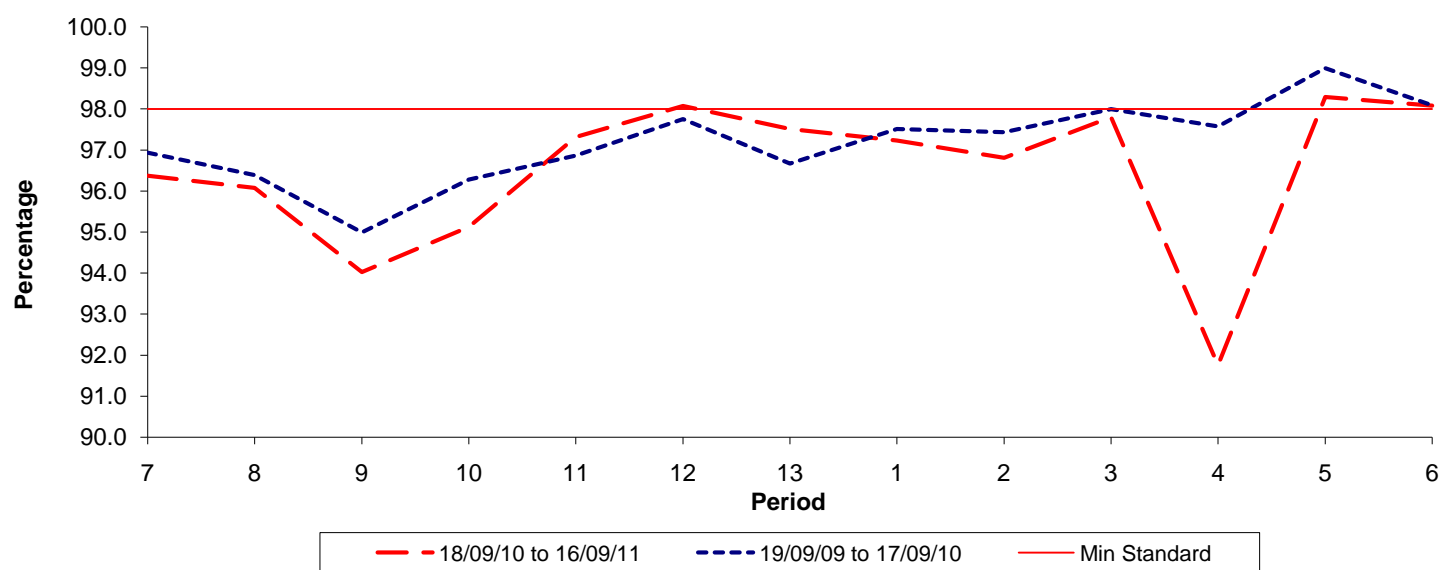


Date Range / Period	7	8	9	10	11	12	13	1	2	3	4	5	6
18/09/10 to 16/09/11	0.55	0.70	0.95	1.07	1.13	0.60	0.64	0.76	0.82	0.85	1.00	1.10	1.07
19/09/09 to 17/09/10	0.69	0.83	0.87	0.90	0.80	0.73	0.78	0.74	0.74	0.60	0.61	0.52	0.58
Min Standard	1.30	1.30	1.30	1.30	1.00	1.00	1.00	1.00	1.00	1.00	1.00	1.00	1.00

Excess Waiting Time figures are based on 12 weeks data

Kilometre Performance

% Kilometres Operated



Date Range / Period	7	8	9	10	11	12	13	1	2	3	4	5	6
18/09/10 to 16/09/11	96.37	96.07	94.02	95.12	97.31	98.07	97.51	97.23	96.81	97.80	91.75	98.29	98.08
19/09/09 to 17/09/10	96.93	96.39	94.99	96.28	96.86	97.75	96.67	97.51	97.43	97.99	97.58	98.99	98.09
Min Standard	98.00	98.00	98.00	98.00	98.00	98.00	98.00	98.00	98.00	98.00	98.00	98.00	98.00

Kilometre figures are based on 4 weeks data