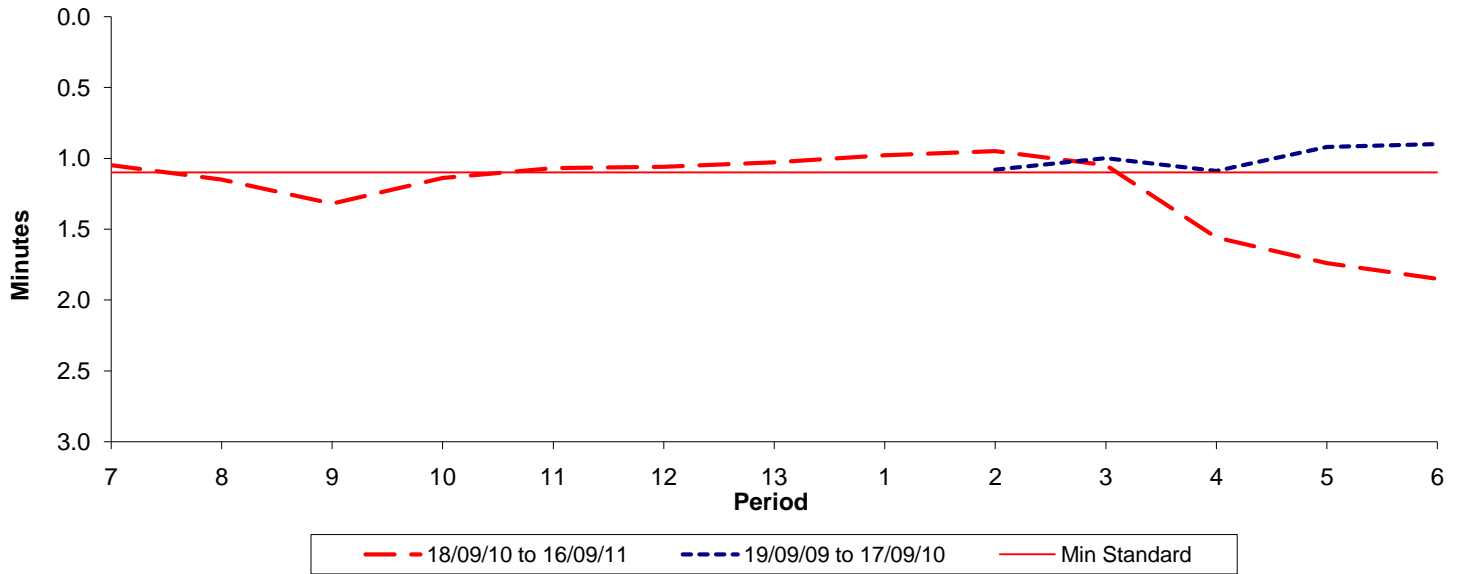




Reliability Performance (High Frequency)

Excess Waiting Time (minutes)

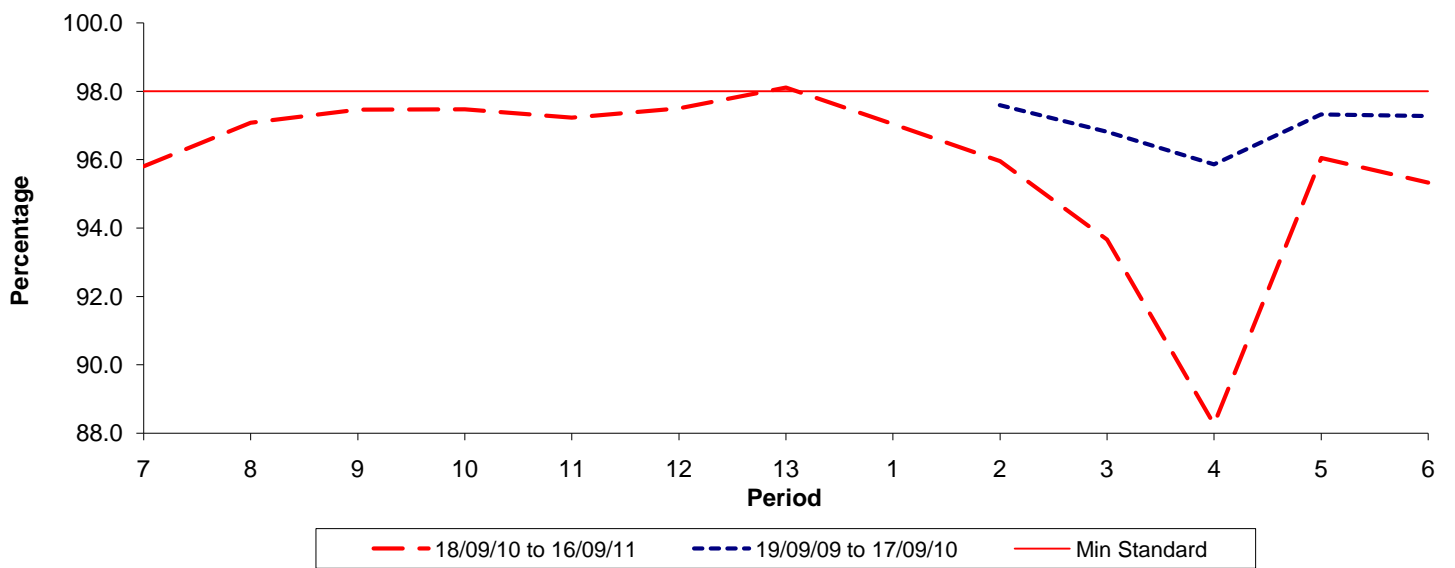


Date Range / Period	7	8	9	10	11	12	13	1	2	3	4	5	6
18/09/10 to 16/09/11	1.05	1.15	1.32	1.14	1.07	1.06	1.03	0.98	0.95	1.05	1.56	1.74	1.85
19/09/09 to 17/09/10									1.08	1.00	1.09	0.92	0.90
Min Standard	1.10	1.10	1.10	1.10	1.10	1.10	1.10	1.10	1.10	1.10	1.10	1.10	1.10

Excess Waiting Time figures are based on 12 weeks data

Kilometre Performance

% Kilometres Operated



Date Range / Period	7	8	9	10	11	12	13	1	2	3	4	5	6
18/09/10 to 16/09/11	95.81	97.08	97.46	97.48	97.23	97.50	98.11	97.04	95.96	93.66	88.26	96.05	95.33
19/09/09 to 17/09/10									97.60	96.82	95.86	97.33	97.28
Min Standard	98.00	98.00	98.00	98.00	98.00	98.00	98.00	98.00	98.00	98.00	98.00	98.00	98.00

Kilometre figures are based on 4 weeks data