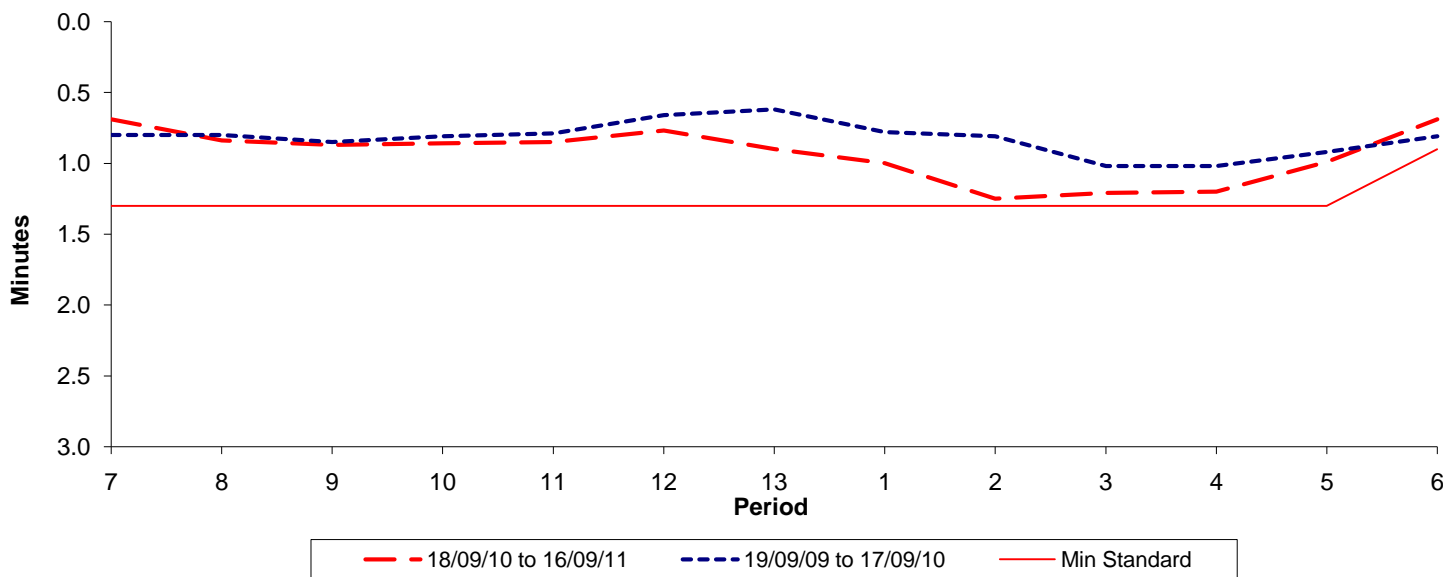




Reliability Performance (High Frequency)

Excess Waiting Time (minutes)

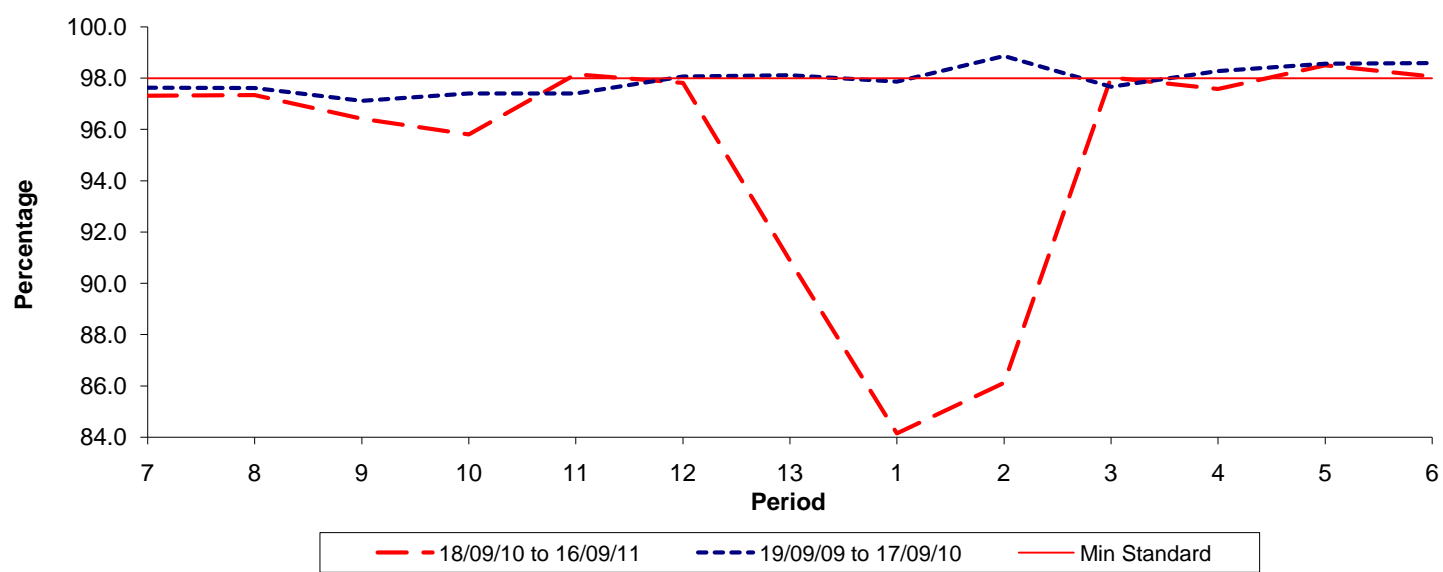


Date Range / Period	7	8	9	10	11	12	13	1	2	3	4	5	6
18/09/10 to 16/09/11	0.69	0.84	0.87	0.86	0.85	0.77	0.90	1.00	1.25	1.21	1.20	0.99	0.69
19/09/09 to 17/09/10	0.80	0.80	0.85	0.81	0.79	0.66	0.62	0.78	0.81	1.02	1.02	0.92	0.81
Min Standard	1.30	1.30	1.30	1.30	1.30	1.30	1.30	1.30	1.30	1.30	1.30	1.30	0.90

Excess Waiting Time figures are based on 12 weeks data

Kilometre Performance

% Kilometres Operated



Date Range / Period	7	8	9	10	11	12	13	1	2	3	4	5	6
18/09/10 to 16/09/11	97.31	97.34	96.42	95.80	98.15	97.81	90.88	84.14	86.11	98.03	97.57	98.50	98.06
19/09/09 to 17/09/10	97.63	97.62	97.12	97.40	97.41	98.07	98.12	97.86	98.86	97.67	98.28	98.56	98.59
Min Standard	98.00	98.00	98.00	98.00	98.00	98.00	98.00	98.00	98.00	98.00	98.00	98.00	98.00

Kilometre figures are based on 4 weeks data