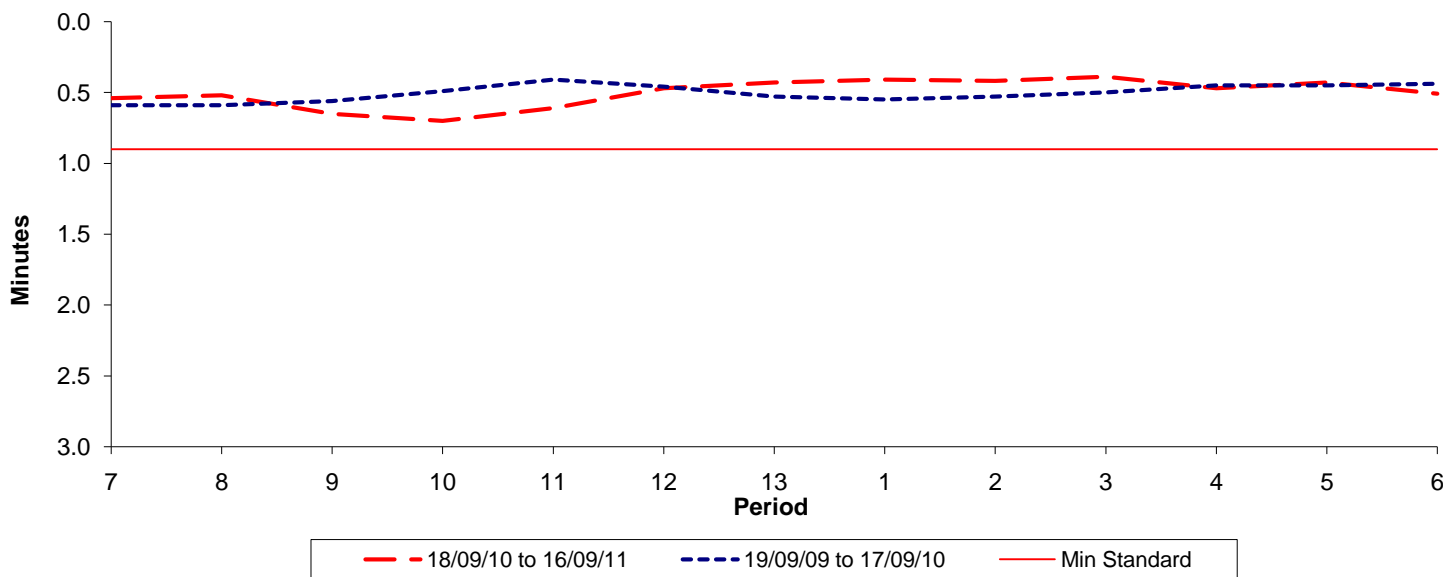




**Reliability Performance ( High Frequency )**

**Excess Waiting Time (minutes)**

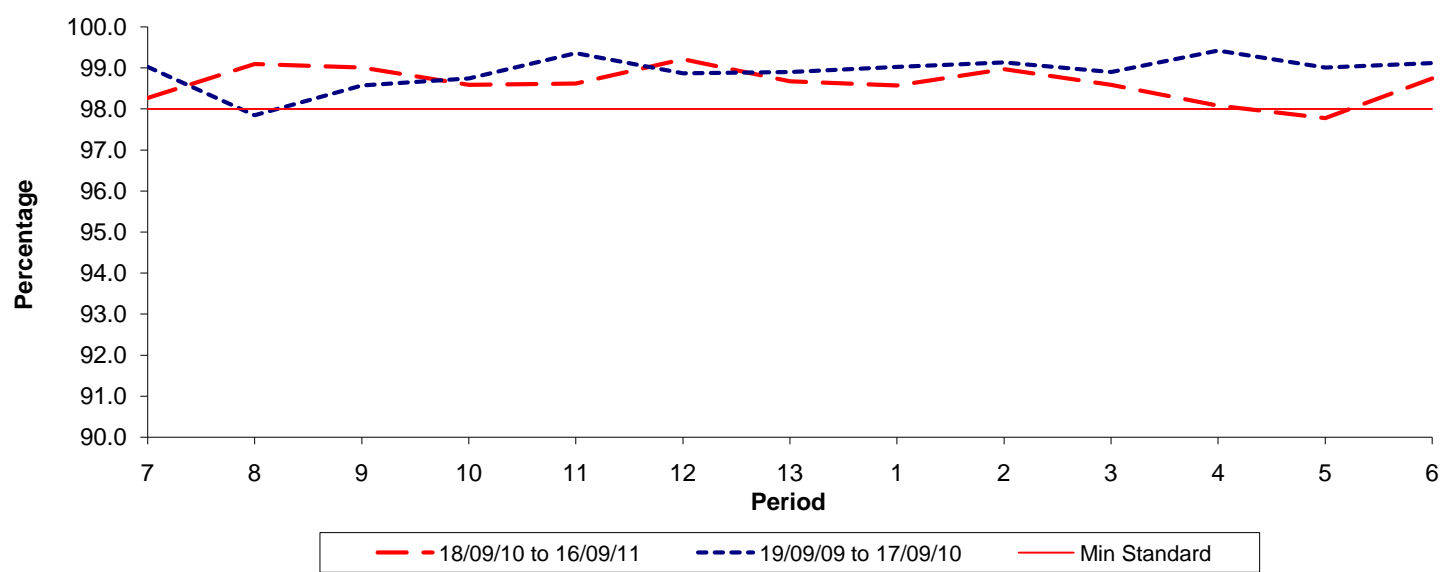


Date Range / Period	7	8	9	10	11	12	13	1	2	3	4	5	6
18/09/10 to 16/09/11	0.54	0.52	0.65	0.70	0.61	0.47	0.43	0.41	0.42	0.39	0.47	0.43	0.51
19/09/09 to 17/09/10	0.59	0.59	0.56	0.49	0.41	0.46	0.53	0.55	0.53	0.50	0.45	0.45	0.44
Min Standard	0.90	0.90	0.90	0.90	0.90	0.90	0.90	0.90	0.90	0.90	0.90	0.90	0.90

Excess Waiting Time figures are based on 12 weeks data

**Kilometre Performance**

**% Kilometres Operated**



Date Range / Period	7	8	9	10	11	12	13	1	2	3	4	5	6
18/09/10 to 16/09/11	98.27	99.09	99.01	98.59	98.62	99.21	98.67	98.57	98.97	98.59	98.08	97.78	98.74
19/09/09 to 17/09/10	99.02	97.85	98.57	98.74	99.36	98.87	98.90	99.02	99.13	98.90	99.42	99.01	99.12
Min Standard	98.00	98.00	98.00	98.00	98.00	98.00	98.00	98.00	98.00	98.00	98.00	98.00	98.00

Kilometre figures are based on 4 weeks data