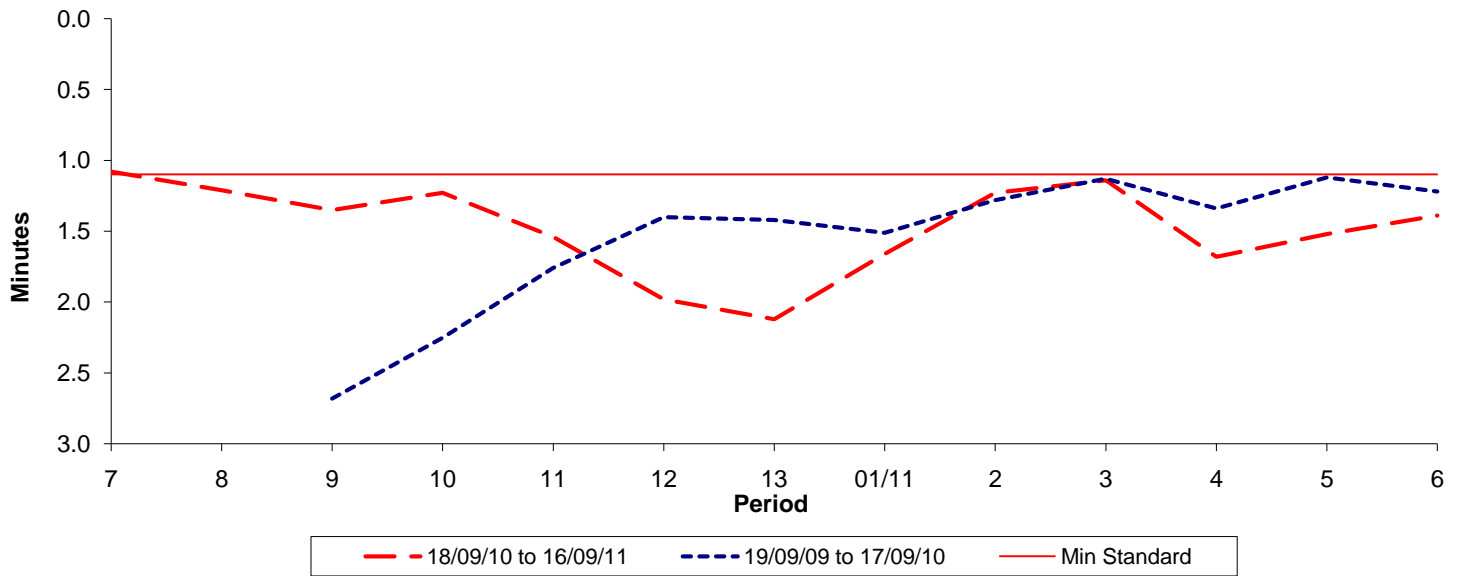




Reliability Performance (High Frequency)

Excess Waiting Time (minutes)

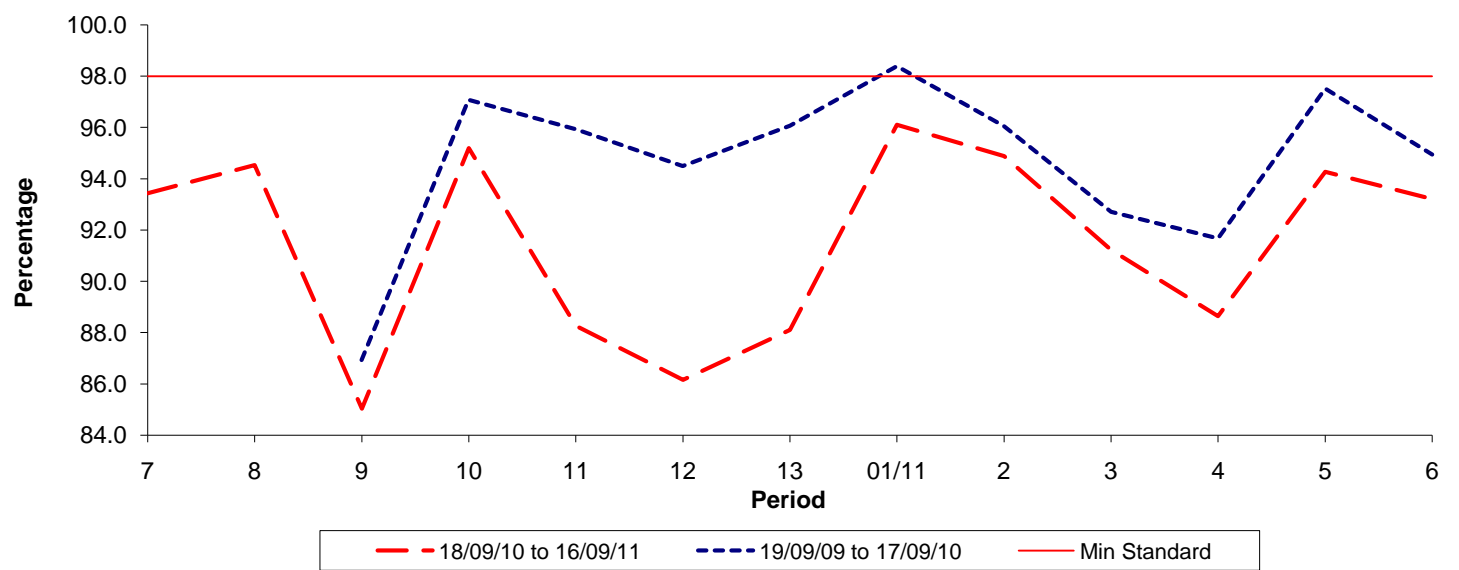


Date Range / Period	7	8	9	10	11	12	13	01/11	2	3	4	5	6
18/09/10 to 16/09/11	1.08	1.21	1.35	1.23	1.54	1.98	2.12	1.66	1.23	1.14	1.68	1.52	1.39
19/09/09 to 17/09/10			2.68	2.25	1.76	1.40	1.42	1.51	1.28	1.13	1.34	1.12	1.22
Min Standard	1.10	1.10	1.10	1.10	1.10	1.10	1.10	1.10	1.10	1.10	1.10	1.10	1.10

Excess Waiting Time figures are based on 12 weeks data

Kilometre Performance

% Kilometres Operated



Date Range / Period	7	8	9	10	11	12	13	01/11	2	3	4	5	6
18/09/10 to 16/09/11	93.44	94.54	85.03	95.20	88.27	86.16	88.10	96.11	94.89	91.22	88.64	94.27	93.21
19/09/09 to 17/09/10			86.93	97.08	95.93	94.50	96.07	98.39	96.05	92.71	91.68	97.51	94.95
Min Standard	98.00	98.00	98.00	98.00	98.00	98.00	98.00	98.00	98.00	98.00	98.00	98.00	98.00

Kilometre figures are based on 4 weeks data