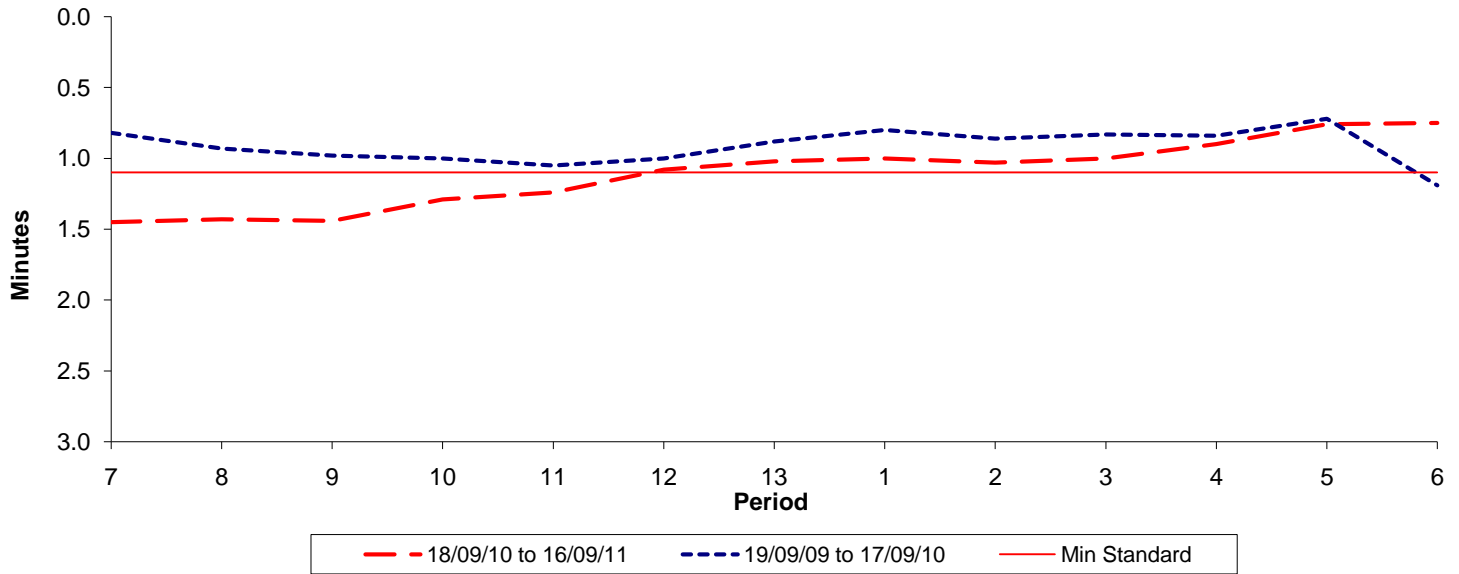




**Reliability Performance ( High Frequency )**

**Excess Waiting Time (minutes)**

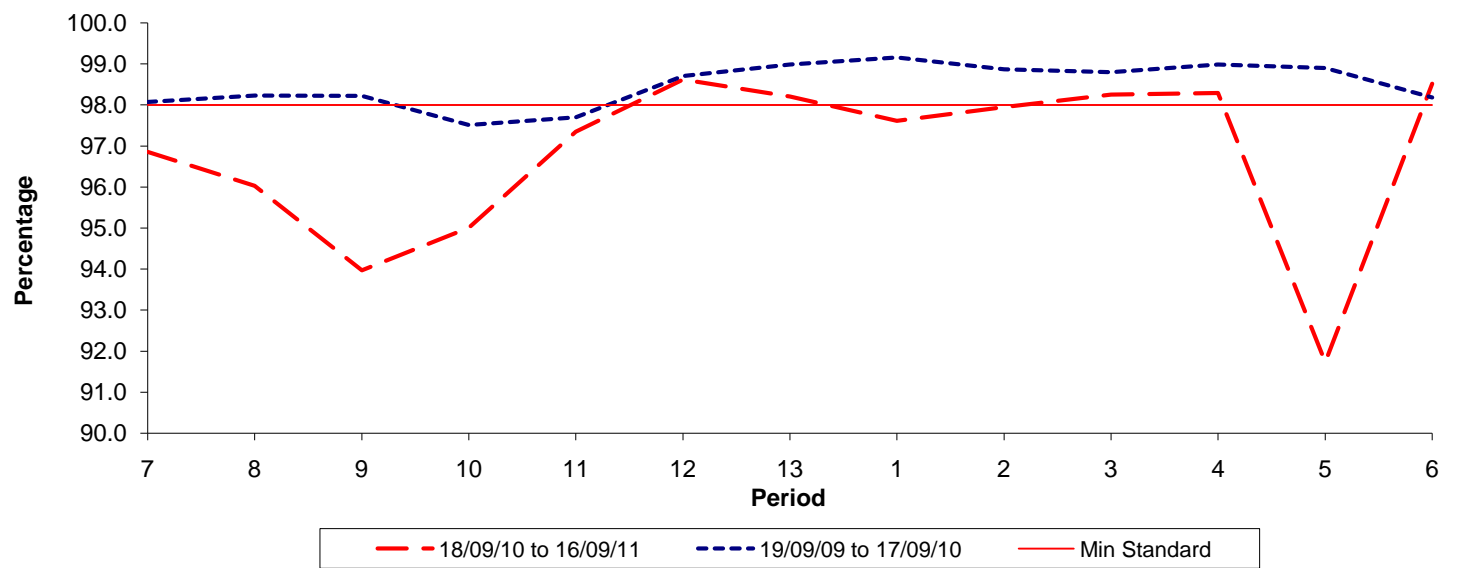


Date Range / Period	7	8	9	10	11	12	13	1	2	3	4	5	6
18/09/10 to 16/09/11	1.45	1.43	1.44	1.29	1.24	1.08	1.02	1.00	1.03	1.00	0.90	0.76	0.75
19/09/09 to 17/09/10	0.82	0.93	0.98	1.00	1.05	1.00	0.88	0.80	0.86	0.83	0.84	0.72	1.19
Min Standard	1.10	1.10	1.10	1.10	1.10	1.10	1.10	1.10	1.10	1.10	1.10	1.10	1.10

Excess Waiting Time figures are based on 12 weeks data

**Kilometre Performance**

**% Kilometres Operated**



Date Range / Period	7	8	9	10	11	12	13	1	2	3	4	5	6
18/09/10 to 16/09/11	96.86	96.03	93.97	95.01	97.35	98.62	98.21	97.61	97.95	98.25	98.29	91.73	98.52
19/09/09 to 17/09/10	98.07	98.23	98.22	97.51	97.70	98.71	98.99	99.16	98.87	98.80	98.99	98.90	98.18
Min Standard	98.00	98.00	98.00	98.00	98.00	98.00	98.00	98.00	98.00	98.00	98.00	98.00	98.00

Kilometre figures are based on 4 weeks data