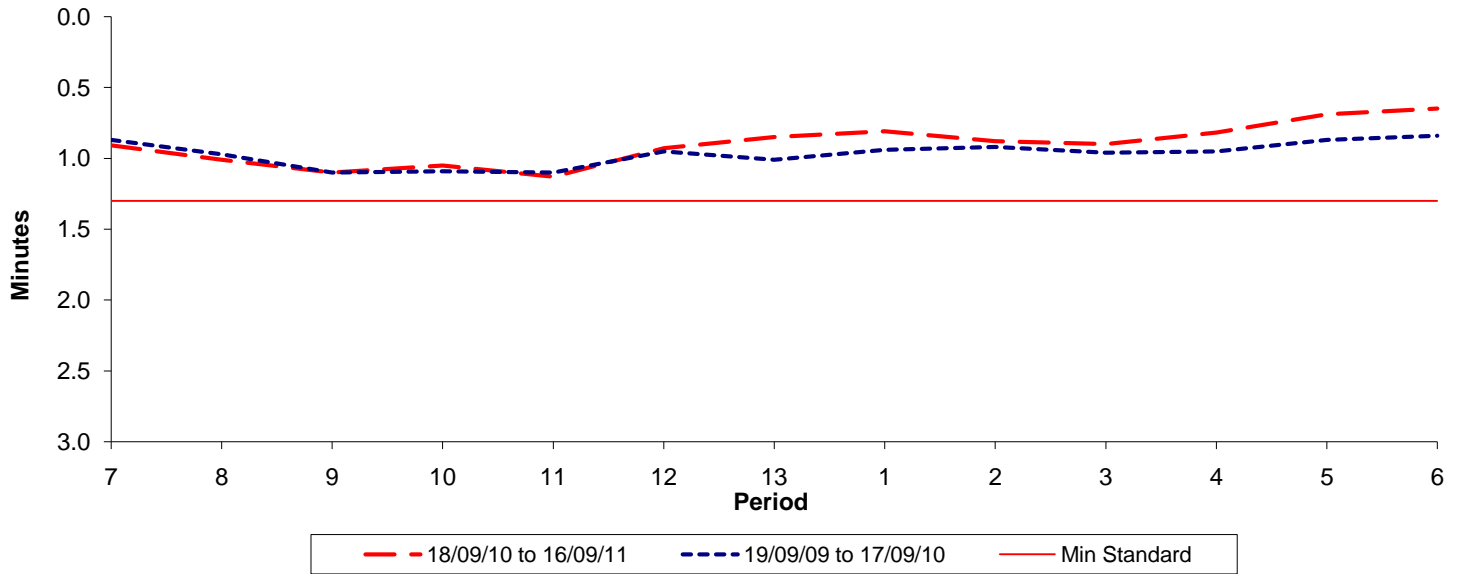




Reliability Performance (High Frequency)

Excess Waiting Time (minutes)

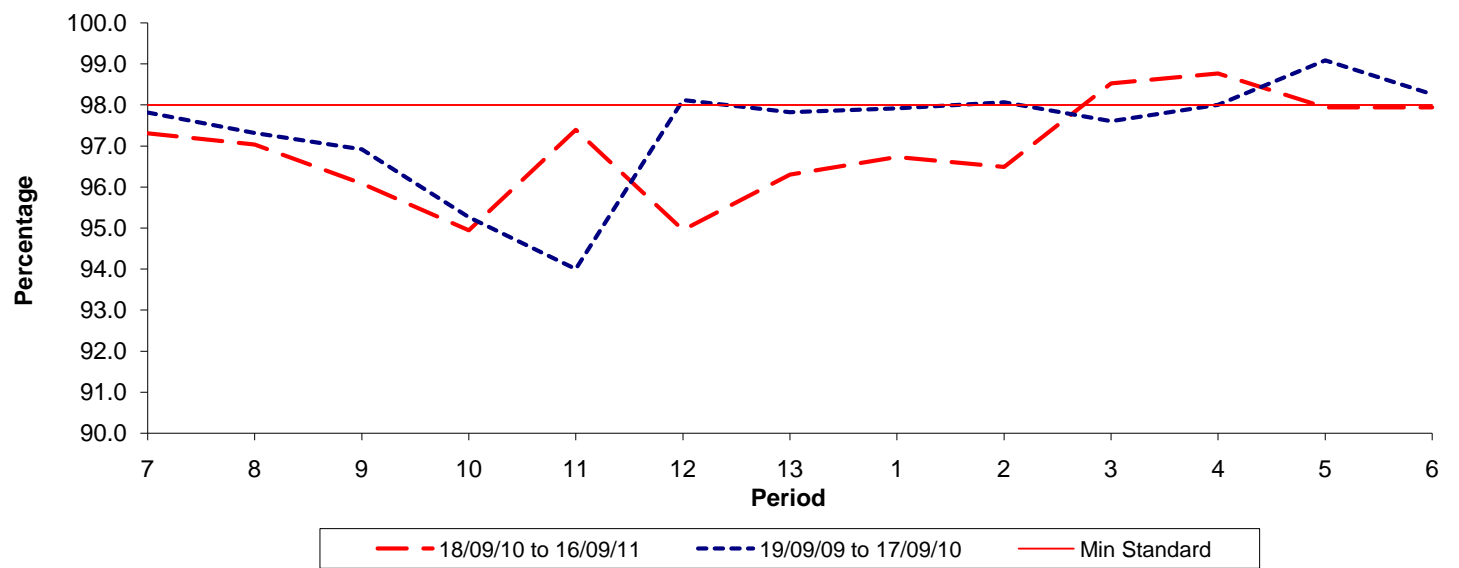


Date Range / Period	7	8	9	10	11	12	13	1	2	3	4	5	6
18/09/10 to 16/09/11	0.91	1.01	1.10	1.05	1.13	0.93	0.85	0.81	0.88	0.90	0.82	0.69	0.65
19/09/09 to 17/09/10	0.87	0.97	1.10	1.09	1.10	0.95	1.01	0.94	0.92	0.96	0.95	0.87	0.84
Min Standard	1.30	1.30	1.30	1.30	1.30	1.30	1.30	1.30	1.30	1.30	1.30	1.30	1.30

Excess Waiting Time figures are based on 12 weeks data

Kilometre Performance

% Kilometres Operated



Date Range / Period	7	8	9	10	11	12	13	1	2	3	4	5	6
18/09/10 to 16/09/11	97.31	97.04	96.08	94.94	97.40	94.95	96.30	96.73	96.49	98.53	98.77	97.94	97.94
19/09/09 to 17/09/10	97.82	97.32	96.92	95.26	94.00	98.12	97.82	97.92	98.07	97.61	98.00	99.09	98.26
Min Standard	98.00	98.00	98.00	98.00	98.00	98.00	98.00	98.00	98.00	98.00	98.00	98.00	98.00

Kilometre figures are based on 4 weeks data