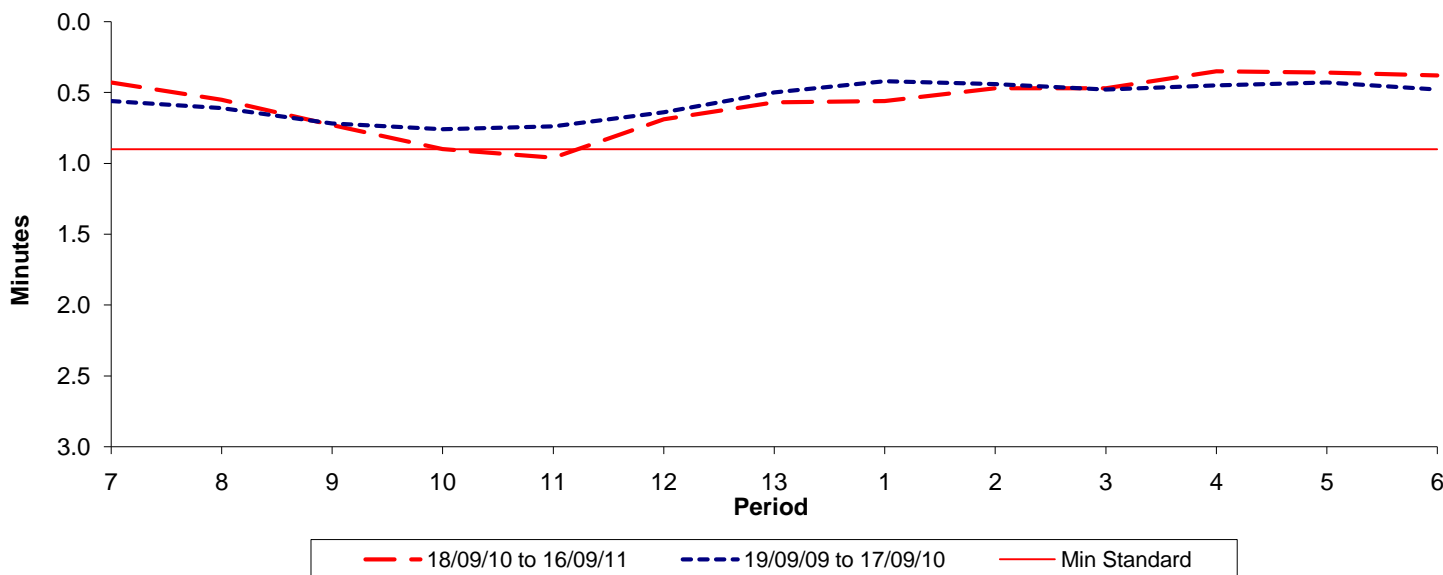




Reliability Performance (High Frequency)

Excess Waiting Time (minutes)

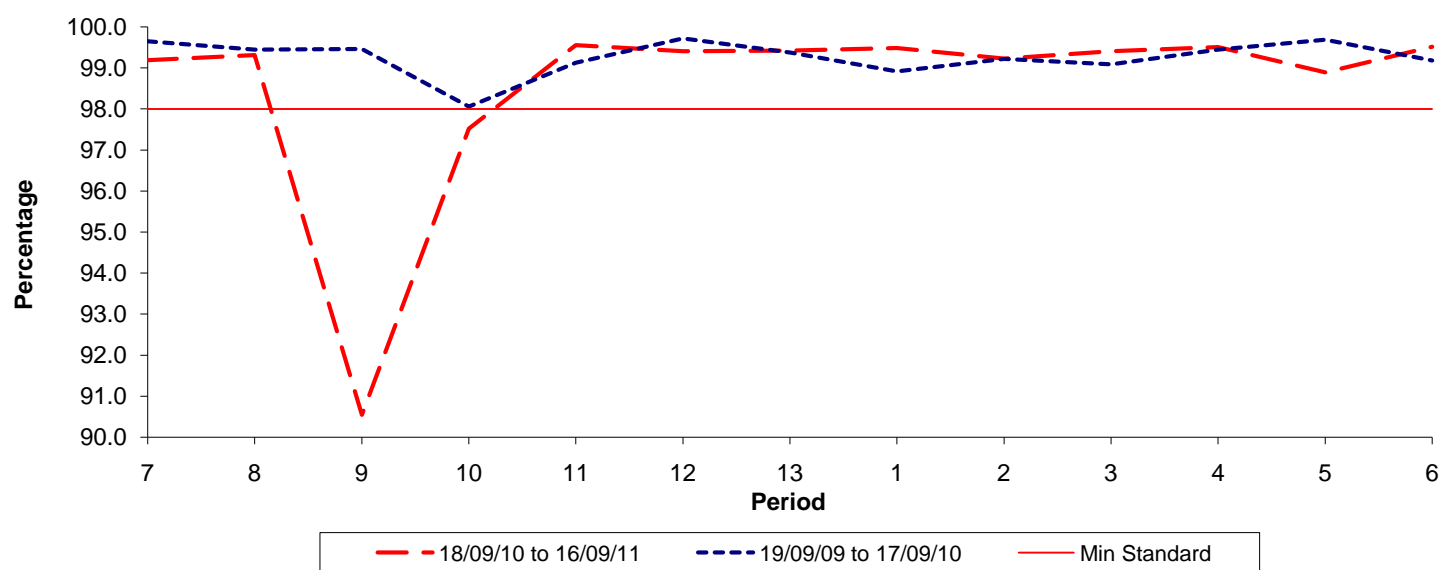


Date Range / Period	7	8	9	10	11	12	13	1	2	3	4	5	6
18/09/10 to 16/09/11	0.43	0.55	0.73	0.90	0.96	0.69	0.57	0.56	0.47	0.47	0.35	0.36	0.38
19/09/09 to 17/09/10	0.56	0.61	0.72	0.76	0.74	0.64	0.50	0.42	0.44	0.48	0.45	0.43	0.48
Min Standard	0.90	0.90	0.90	0.90	0.90	0.90	0.90	0.90	0.90	0.90	0.90	0.90	0.90

Excess Waiting Time figures are based on 12 weeks data

Kilometre Performance

% Kilometres Operated



Date Range / Period	7	8	9	10	11	12	13	1	2	3	4	5	6
18/09/10 to 16/09/11	99.19	99.32	90.54	97.52	99.56	99.41	99.43	99.49	99.23	99.41	99.51	98.90	99.52
19/09/09 to 17/09/10	99.65	99.45	99.46	98.06	99.13	99.72	99.38	98.92	99.22	99.09	99.45	99.69	99.18
Min Standard	98.00	98.00	98.00	98.00	98.00	98.00	98.00	98.00	98.00	98.00	98.00	98.00	98.00

Kilometre figures are based on 4 weeks data