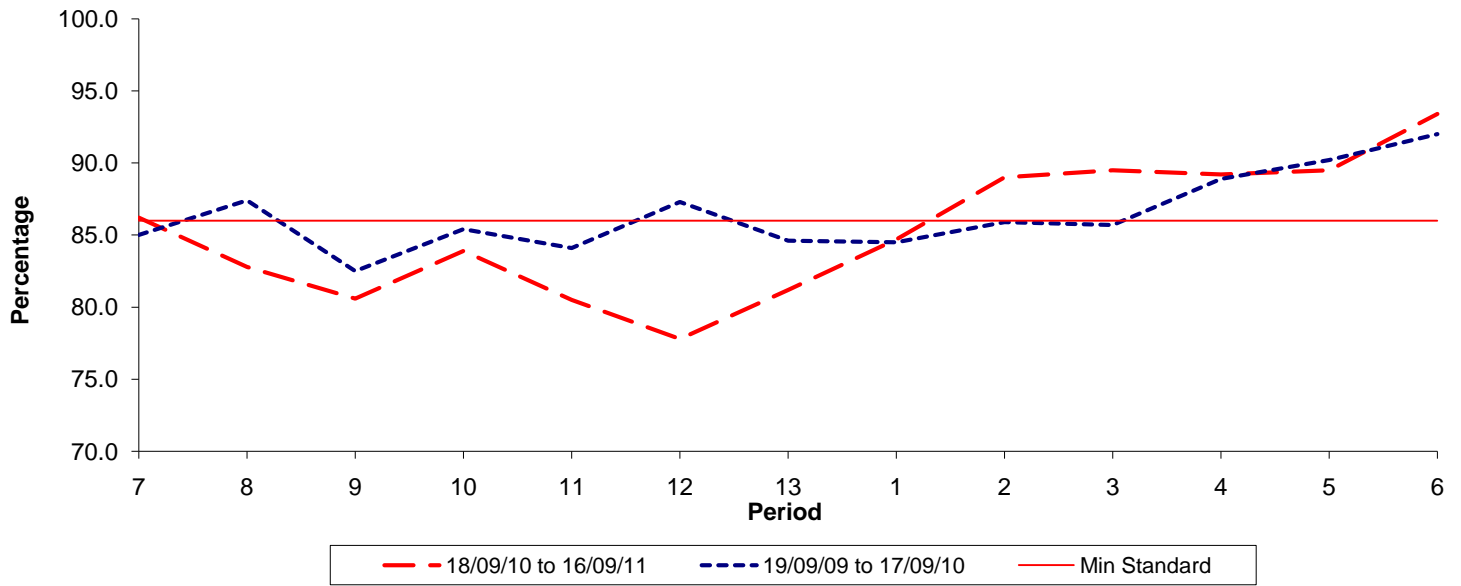




**Reliability Performance ( Low Frequency )**

**% Departing On Time**

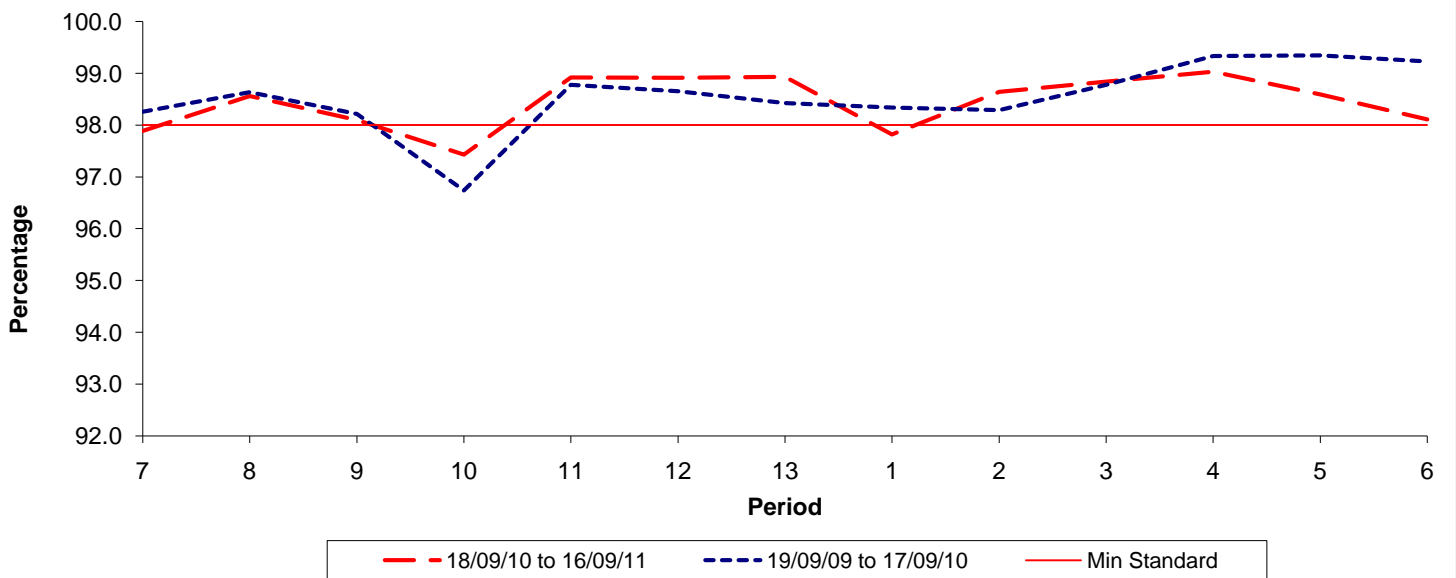


Date Range / Period	7	8	9	10	11	12	13	1	2	3	4	5	6
18/09/10 to 16/09/11	86.20	82.80	80.60	83.90	80.50	77.80	81.20	84.70	89.00	89.50	89.20	89.50	93.40
19/09/09 to 17/09/10	85.00	87.40	82.50	85.40	84.10	87.30	84.60	84.50	85.90	85.70	88.90	90.20	92.00
Min Standard	86.00	86.00	86.00	86.00	86.00	86.00	86.00	86.00	86.00	86.00	86.00	86.00	86.00

On Time figures are based on 12 weeks data

**Kilometre Performance**

**% Kilometres Operated**



Date Range / Period	7	8	9	10	11	12	13	1	2	3	4	5	6
18/09/10 to 16/09/11	97.89	98.56	98.10	97.43	98.92	98.91	98.93	97.82	98.64	98.84	99.03	98.59	98.11
19/09/09 to 17/09/10	98.26	98.64	98.22	96.74	98.78	98.66	98.43	98.34	98.29	98.78	99.34	99.35	99.23
Min Standard	98.00	98.00	98.00	98.00	98.00	98.00	98.00	98.00	98.00	98.00	98.00	98.00	98.00

Kilometre figures are based on 4 weeks data