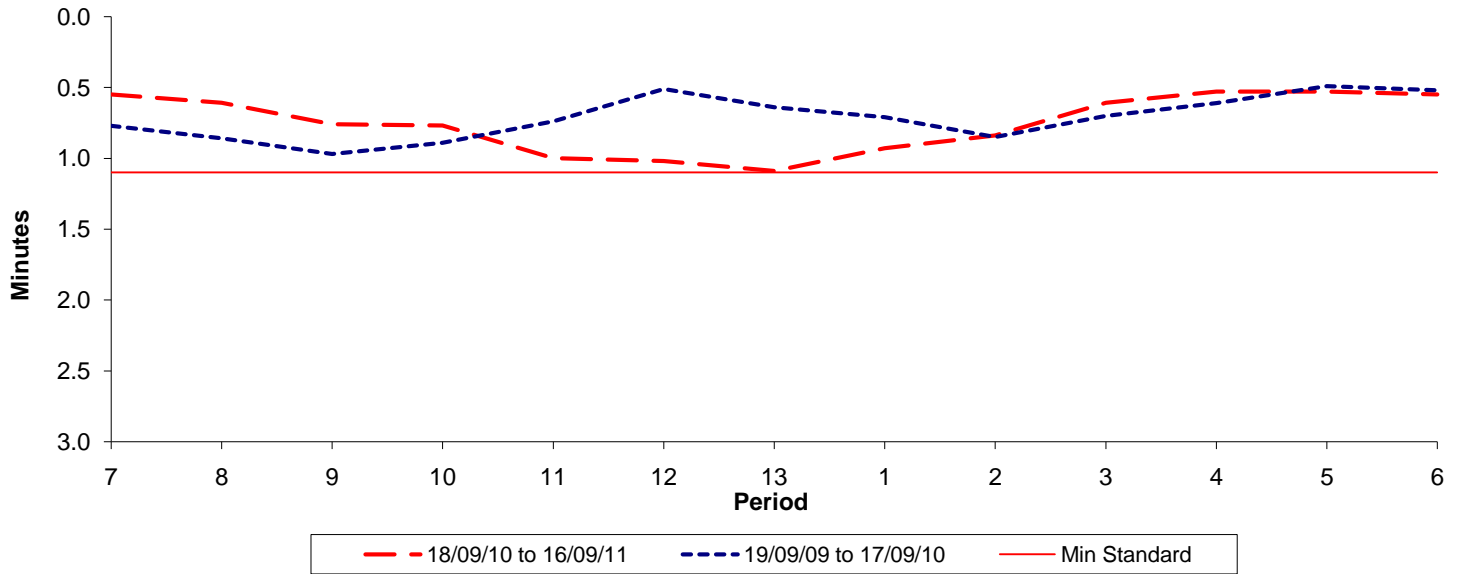




Reliability Performance (High Frequency)

Excess Waiting Time (minutes)

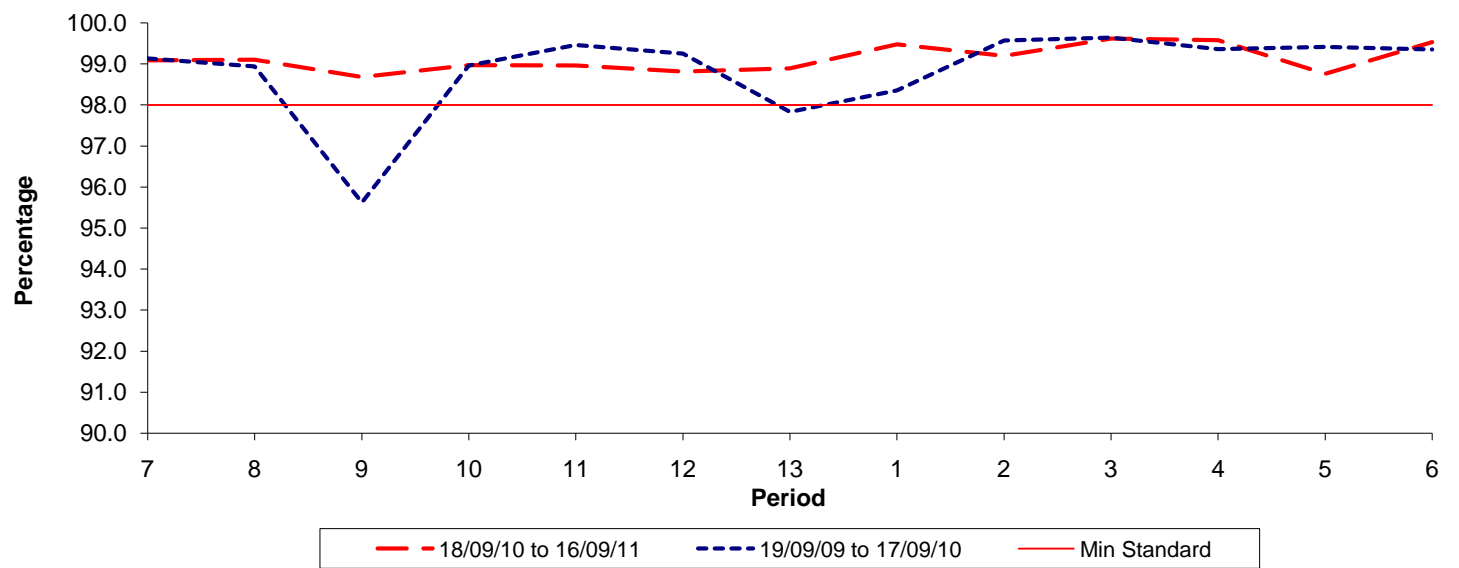


Date Range / Period	7	8	9	10	11	12	13	1	2	3	4	5	6
18/09/10 to 16/09/11	0.55	0.61	0.76	0.77	1.00	1.02	1.09	0.93	0.84	0.61	0.53	0.53	0.55
19/09/09 to 17/09/10	0.77	0.86	0.97	0.89	0.74	0.51	0.64	0.71	0.85	0.70	0.61	0.49	0.52
Min Standard	1.10	1.10	1.10	1.10	1.10	1.10	1.10	1.10	1.10	1.10	1.10	1.10	1.10

Excess Waiting Time figures are based on 12 weeks data

Kilometre Performance

% Kilometres Operated



Date Range / Period	7	8	9	10	11	12	13	1	2	3	4	5	6
18/09/10 to 16/09/11	99.09	99.10	98.68	98.97	98.96	98.81	98.89	99.48	99.20	99.62	99.58	98.76	99.53
19/09/09 to 17/09/10	99.13	98.94	95.62	98.96	99.46	99.25	97.83	98.35	99.57	99.64	99.36	99.41	99.35
Min Standard	98.00	98.00	98.00	98.00	98.00	98.00	98.00	98.00	98.00	98.00	98.00	98.00	98.00

Kilometre figures are based on 4 weeks data