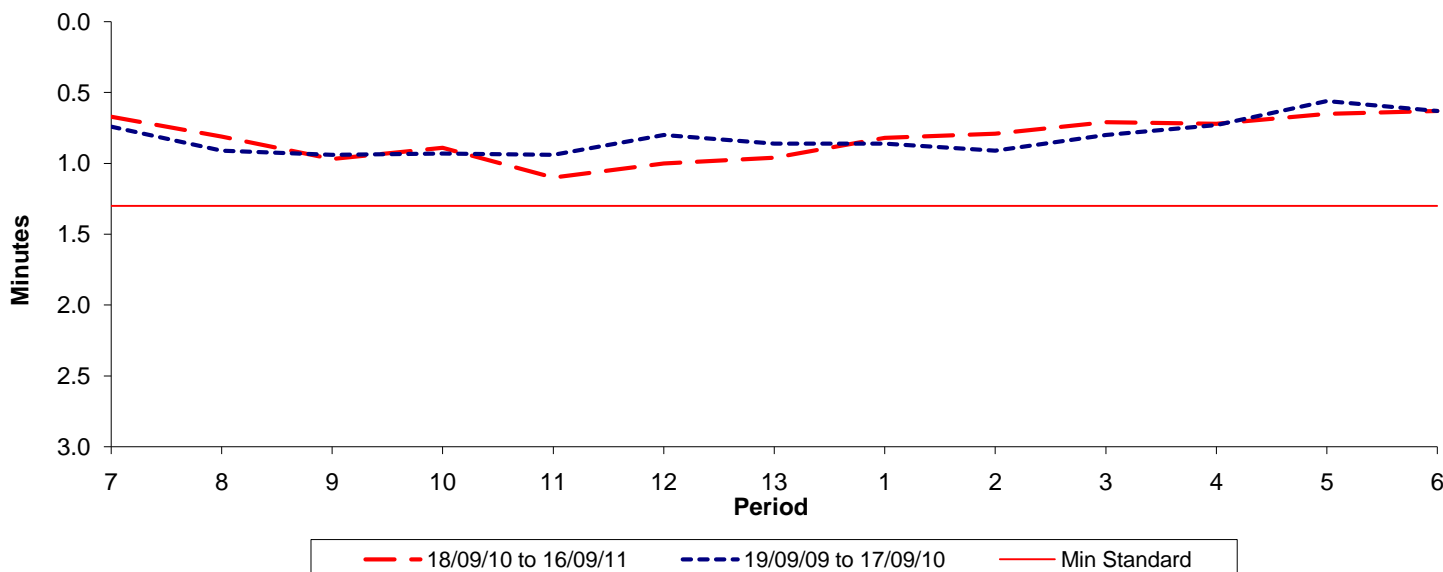




Reliability Performance (High Frequency)

Excess Waiting Time (minutes)

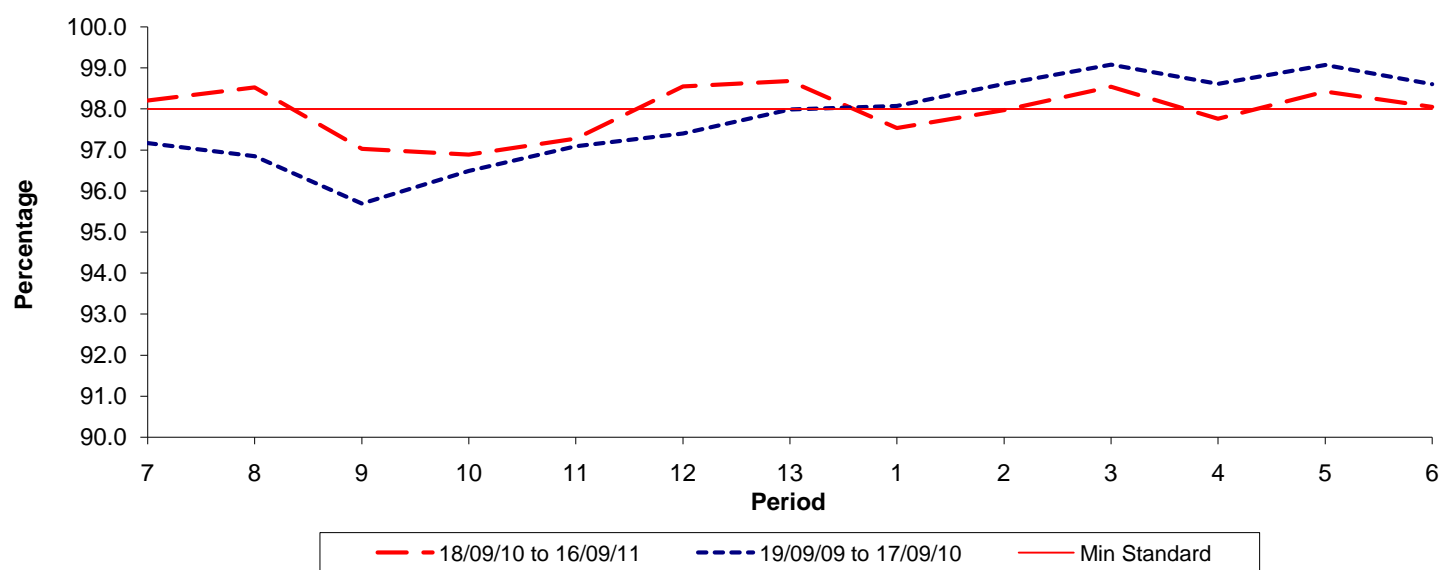


Date Range / Period	7	8	9	10	11	12	13	1	2	3	4	5	6
18/09/10 to 16/09/11	0.67	0.81	0.97	0.89	1.10	1.00	0.96	0.82	0.79	0.71	0.72	0.65	0.63
19/09/09 to 17/09/10	0.74	0.91	0.94	0.93	0.94	0.80	0.86	0.86	0.91	0.80	0.73	0.56	0.63
Min Standard	1.30	1.30	1.30	1.30	1.30	1.30	1.30	1.30	1.30	1.30	1.30	1.30	1.30

Excess Waiting Time figures are based on 12 weeks data

Kilometre Performance

% Kilometres Operated



Date Range / Period	7	8	9	10	11	12	13	1	2	3	4	5	6
18/09/10 to 16/09/11	98.20	98.52	97.03	96.89	97.27	98.55	98.68	97.53	97.97	98.54	97.76	98.42	98.05
19/09/09 to 17/09/10	97.17	96.85	95.69	96.49	97.09	97.40	97.99	98.08	98.62	99.08	98.62	99.08	98.61
Min Standard	98.00	98.00	98.00	98.00	98.00	98.00	98.00	98.00	98.00	98.00	98.00	98.00	98.00

Kilometre figures are based on 4 weeks data