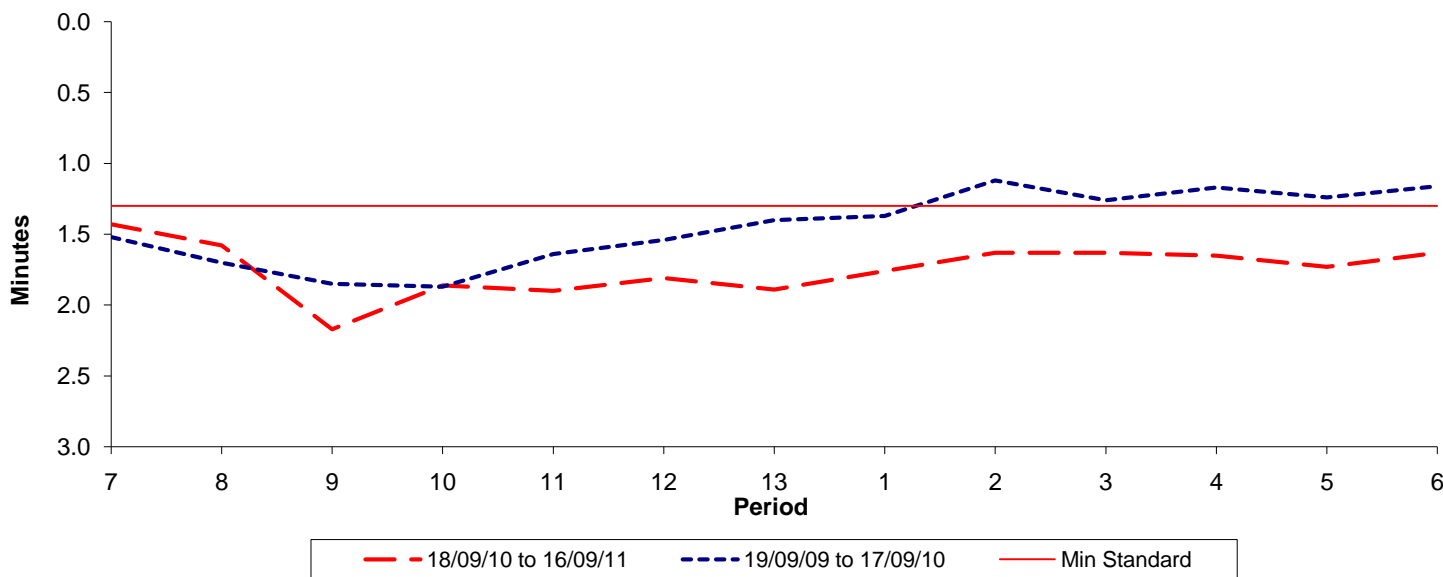




Reliability Performance (High Frequency)

Excess Waiting Time (minutes)

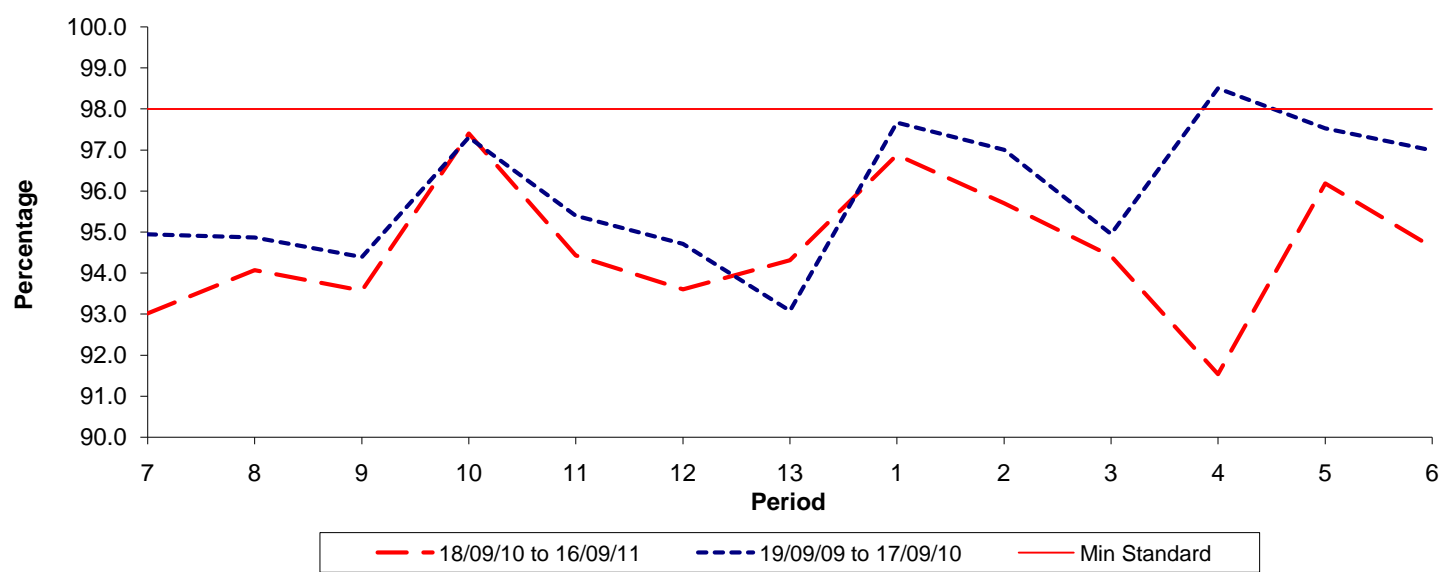


Date Range / Period	7	8	9	10	11	12	13	1	2	3	4	5	6
18/09/10 to 16/09/11	1.43	1.58	2.17	1.86	1.90	1.81	1.89	1.76	1.63	1.63	1.65	1.73	1.63
19/09/09 to 17/09/10	1.52	1.70	1.85	1.87	1.64	1.54	1.40	1.37	1.12	1.26	1.17	1.24	1.16
Min Standard	1.30	1.30	1.30	1.30	1.30	1.30	1.30	1.30	1.30	1.30	1.30	1.30	1.30

Excess Waiting Time figures are based on 12 weeks data

Kilometre Performance

% Kilometres Operated



Date Range / Period	7	8	9	10	11	12	13	1	2	3	4	5	6
18/09/10 to 16/09/11	93.01	94.07	93.57	97.40	94.42	93.60	94.31	96.88	95.70	94.41	91.53	96.18	94.63
19/09/09 to 17/09/10	94.95	94.87	94.39	97.31	95.40	94.71	93.08	97.67	97.00	94.95	98.50	97.53	96.99
Min Standard	98.00	98.00	98.00	98.00	98.00	98.00	98.00	98.00	98.00	98.00	98.00	98.00	98.00

Kilometre figures are based on 4 weeks data