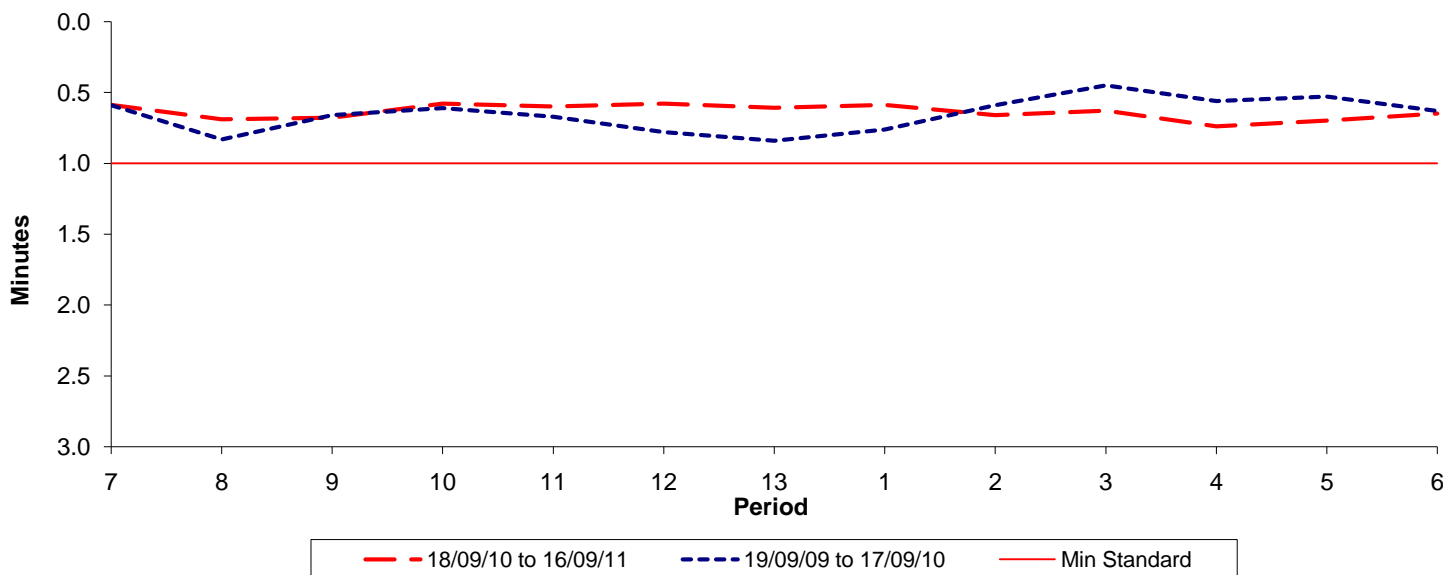




Reliability Performance (High Frequency)

Excess Waiting Time (minutes)

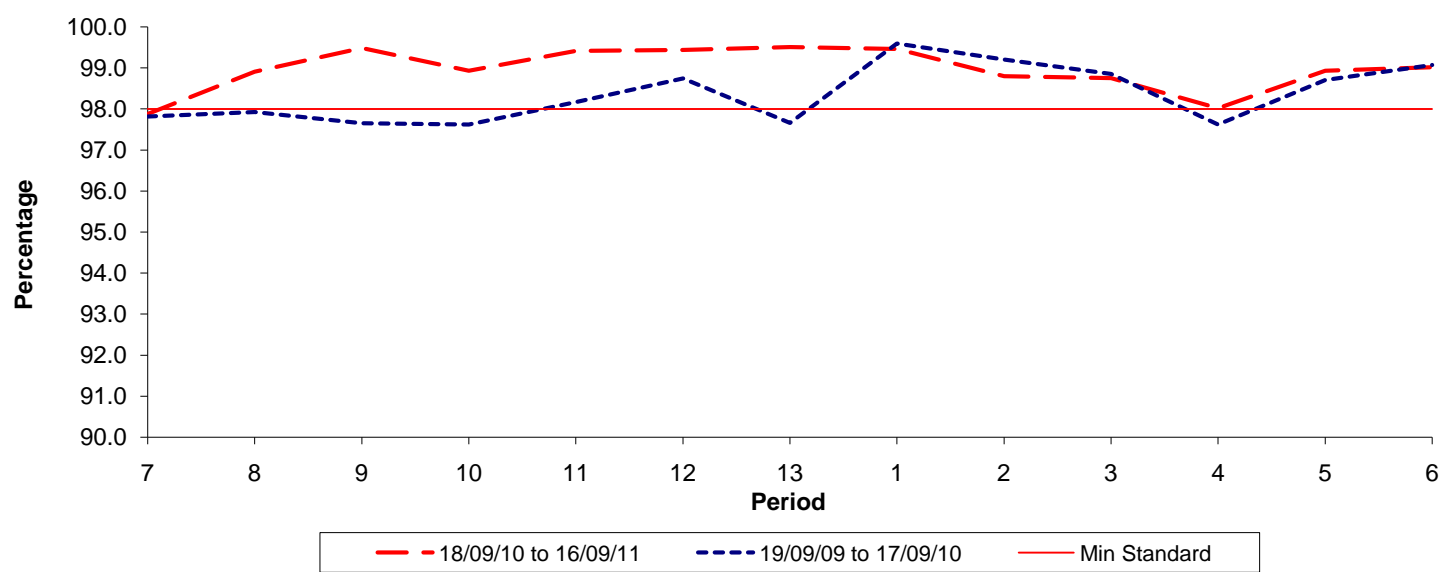


Date Range / Period	7	8	9	10	11	12	13	1	2	3	4	5	6
18/09/10 to 16/09/11	0.59	0.69	0.68	0.58	0.60	0.58	0.61	0.59	0.66	0.63	0.74	0.70	0.65
19/09/09 to 17/09/10	0.59	0.83	0.66	0.61	0.67	0.78	0.84	0.76	0.59	0.45	0.56	0.53	0.63
Min Standard	1.00	1.00	1.00	1.00	1.00	1.00	1.00	1.00	1.00	1.00	1.00	1.00	1.00

Excess Waiting Time figures are based on 12 weeks data

Kilometre Performance

% Kilometres Operated



Date Range / Period	7	8	9	10	11	12	13	1	2	3	4	5	6
18/09/10 to 16/09/11	97.88	98.91	99.49	98.93	99.41	99.44	99.51	99.46	98.80	98.75	98.02	98.93	99.02
19/09/09 to 17/09/10	97.82	97.93	97.65	97.62	98.17	98.75	97.66	99.60	99.21	98.86	97.62	98.71	99.07
Min Standard	98.00	98.00	98.00	98.00	98.00	98.00	98.00	98.00	98.00	98.00	98.00	98.00	98.00

Kilometre figures are based on 4 weeks data