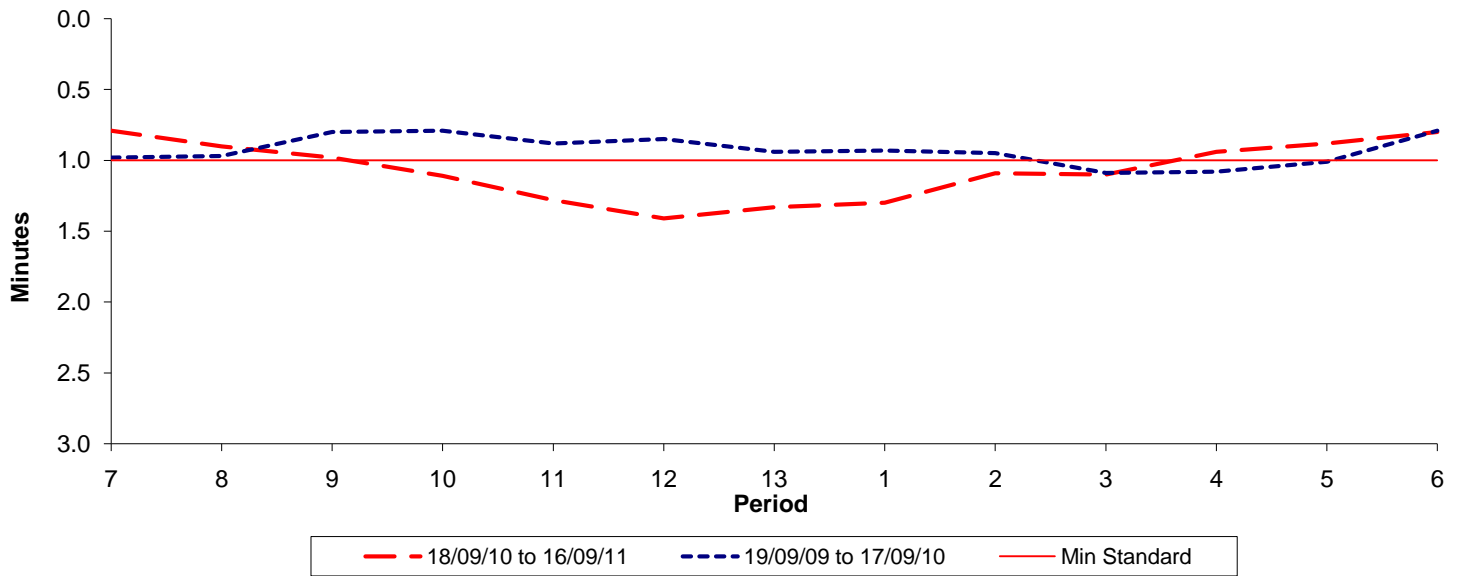




Reliability Performance (High Frequency)

Excess Waiting Time (minutes)

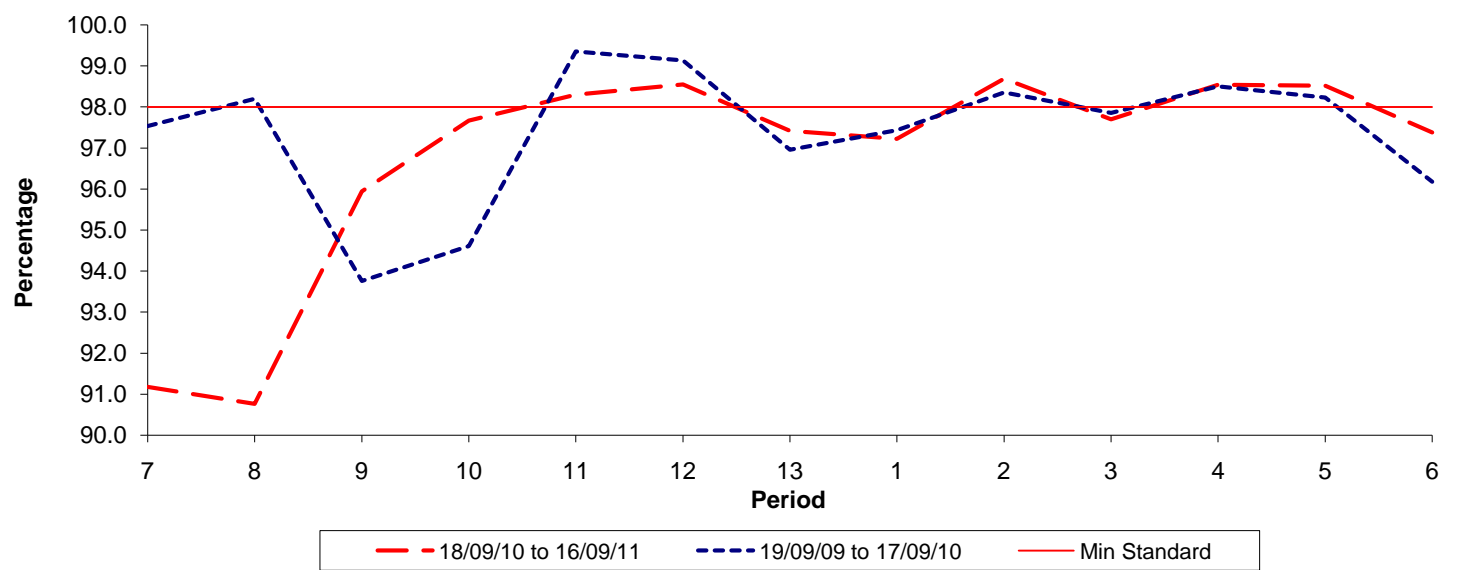


Date Range / Period	7	8	9	10	11	12	13	1	2	3	4	5	6
18/09/10 to 16/09/11	0.79	0.90	0.98	1.11	1.28	1.41	1.33	1.30	1.09	1.10	0.94	0.88	0.80
19/09/09 to 17/09/10	0.98	0.97	0.80	0.79	0.88	0.85	0.94	0.93	0.95	1.09	1.08	1.01	0.79
Min Standard	1.00	1.00	1.00	1.00	1.00	1.00	1.00	1.00	1.00	1.00	1.00	1.00	1.00

Excess Waiting Time figures are based on 12 weeks data

Kilometre Performance

% Kilometres Operated



Date Range / Period	7	8	9	10	11	12	13	1	2	3	4	5	6
18/09/10 to 16/09/11	91.17	90.76	95.94	97.67	98.30	98.55	97.42	97.22	98.69	97.70	98.54	98.52	97.38
19/09/09 to 17/09/10	97.53	98.20	93.76	94.61	99.35	99.13	96.96	97.43	98.35	97.85	98.50	98.23	96.18
Min Standard	98.00	98.00	98.00	98.00	98.00	98.00	98.00	98.00	98.00	98.00	98.00	98.00	98.00

Kilometre figures are based on 4 weeks data