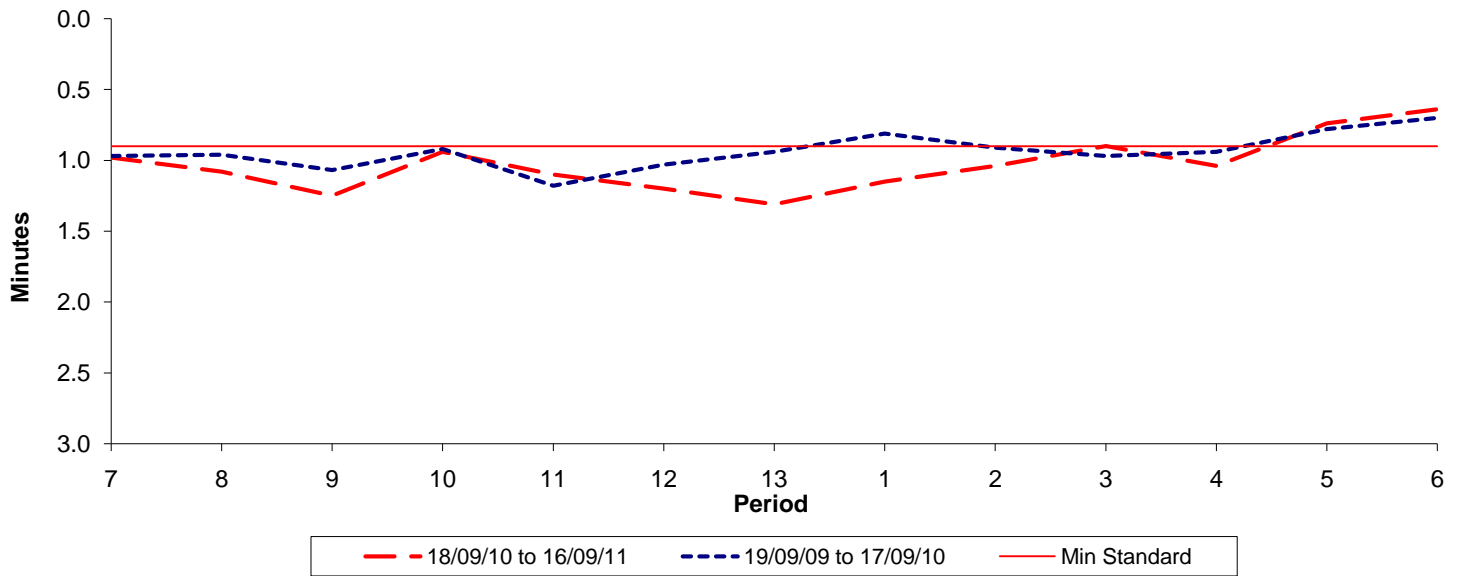




**Reliability Performance ( High Frequency )**

**Excess Waiting Time (minutes)**

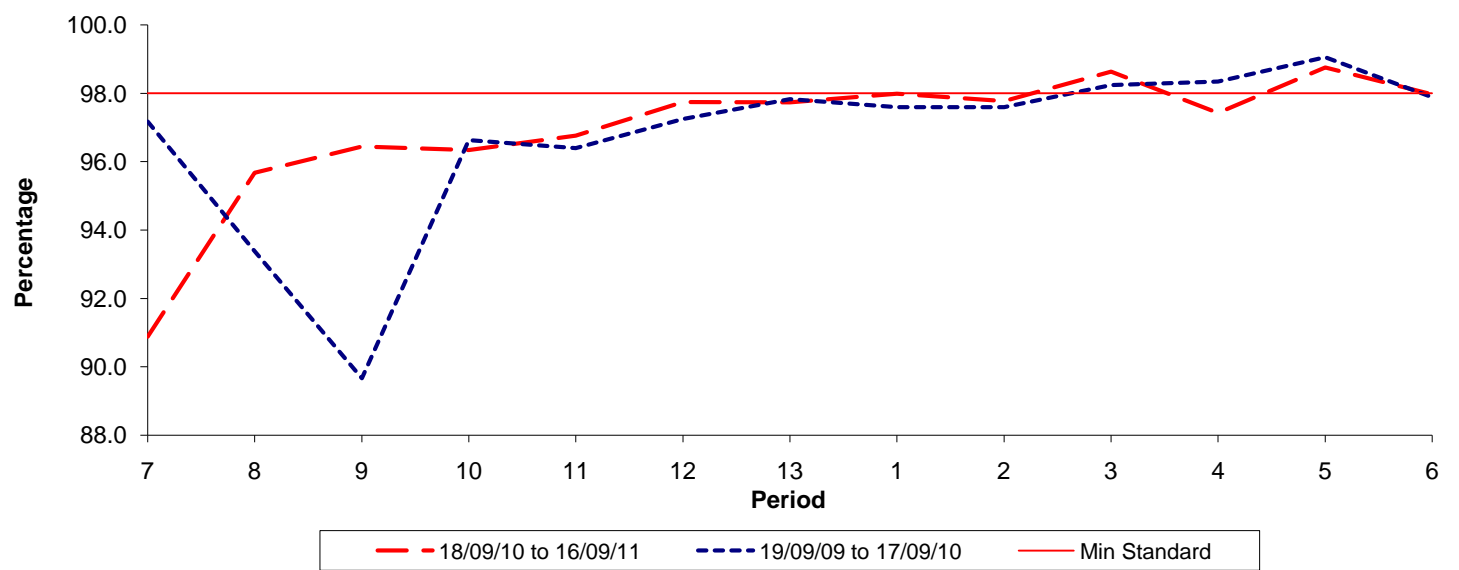


Date Range / Period	7	8	9	10	11	12	13	1	2	3	4	5	6
18/09/10 to 16/09/11	0.98	1.08	1.25	0.94	1.10	1.20	1.31	1.15	1.04	0.90	1.04	0.74	0.64
19/09/09 to 17/09/10	0.97	0.96	1.07	0.92	1.18	1.03	0.94	0.81	0.91	0.97	0.94	0.78	0.70
Min Standard	0.90	0.90	0.90	0.90	0.90	0.90	0.90	0.90	0.90	0.90	0.90	0.90	0.90

Excess Waiting Time figures are based on 12 weeks data

**Kilometre Performance**

**% Kilometres Operated**



Date Range / Period	7	8	9	10	11	12	13	1	2	3	4	5	6
18/09/10 to 16/09/11	90.88	95.68	96.45	96.34	96.76	97.75	97.74	97.99	97.78	98.64	97.43	98.76	97.97
19/09/09 to 17/09/10	97.18	93.38	89.66	96.63	96.40	97.25	97.83	97.60	97.60	98.24	98.35	99.06	97.89
Min Standard	98.00	98.00	98.00	98.00	98.00	98.00	98.00	98.00	98.00	98.00	98.00	98.00	98.00

Kilometre figures are based on 4 weeks data