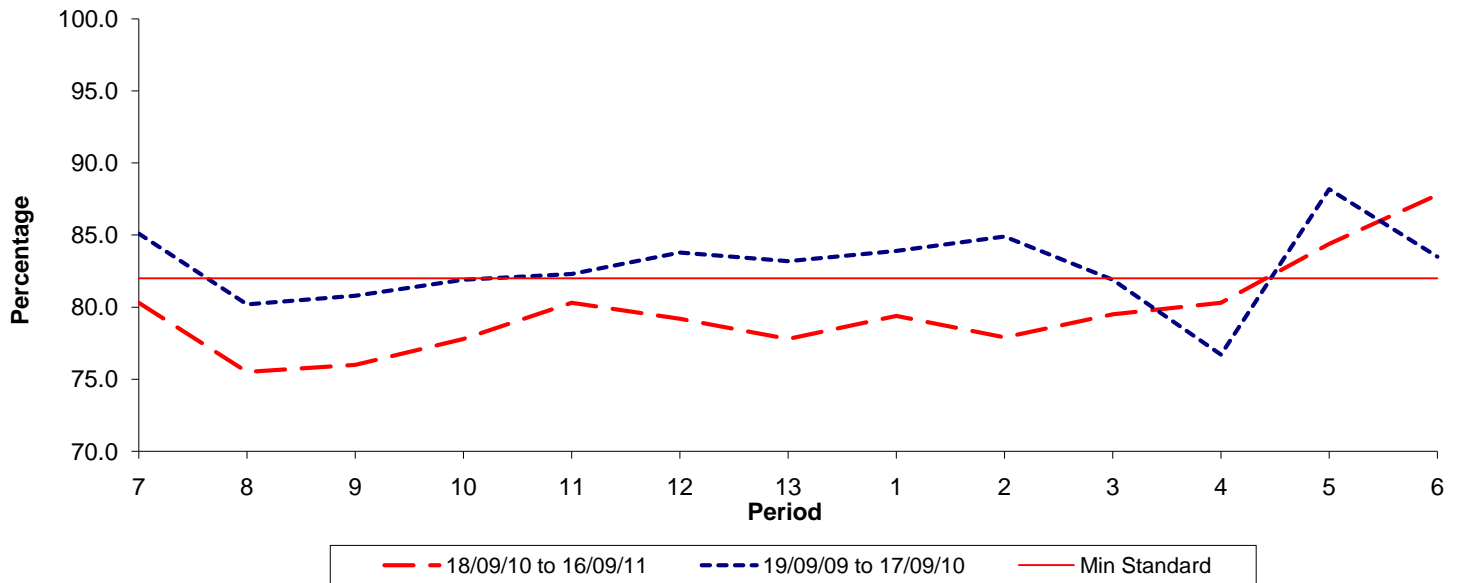




**Reliability Performance ( Low Frequency )**

**% Departing On Time**

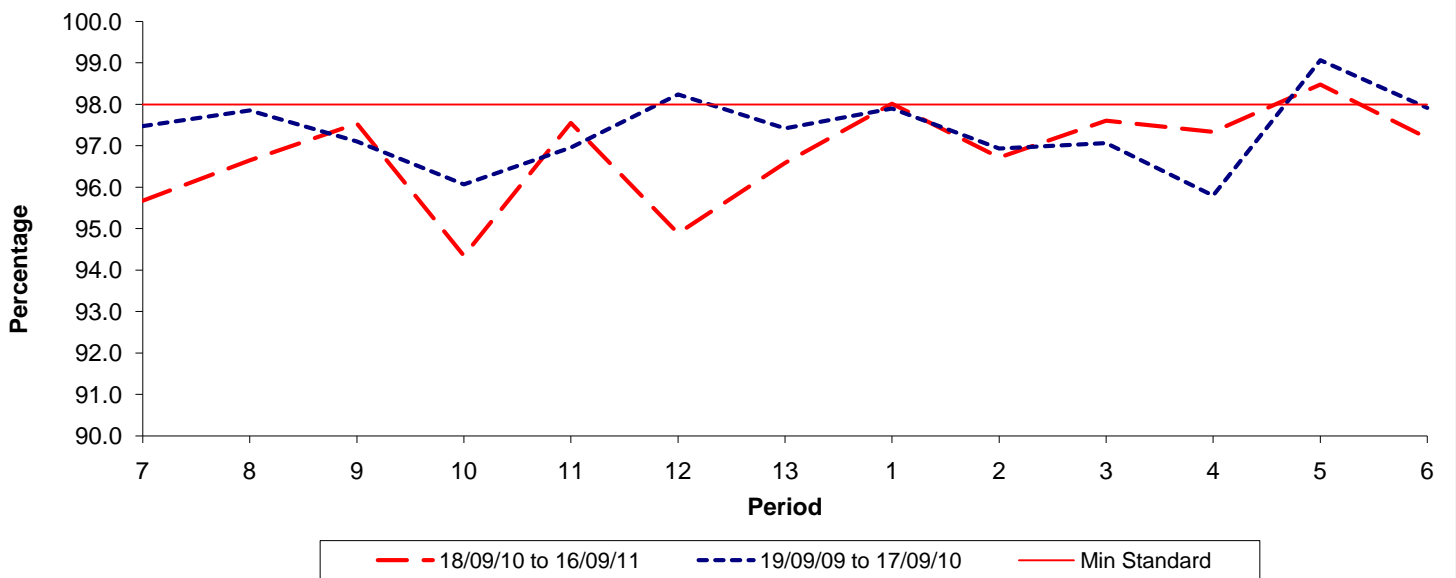


Date Range / Period	7	8	9	10	11	12	13	1	2	3	4	5	6
18/09/10 to 16/09/11	80.30	75.50	76.00	77.80	80.30	79.20	77.80	79.40	77.90	79.50	80.30	84.40	87.80
19/09/09 to 17/09/10	85.10	80.20	80.80	81.90	82.30	83.80	83.20	83.90	84.90	81.90	76.70	88.20	83.50
Min Standard	82.00	82.00	82.00	82.00	82.00	82.00	82.00	82.00	82.00	82.00	82.00	82.00	82.00

On Time figures are based on 12 weeks data

**Kilometre Performance**

**% Kilometres Operated**



Date Range / Period	7	8	9	10	11	12	13	1	2	3	4	5	6
18/09/10 to 16/09/11	95.68	96.65	97.54	94.35	97.55	94.89	96.59	98.02	96.72	97.61	97.34	98.48	97.19
19/09/09 to 17/09/10	97.48	97.86	97.11	96.07	96.96	98.24	97.42	97.90	96.94	97.07	95.80	99.07	97.92
Min Standard	98.00	98.00	98.00	98.00	98.00	98.00	98.00	98.00	98.00	98.00	98.00	98.00	98.00

Kilometre figures are based on 4 weeks data