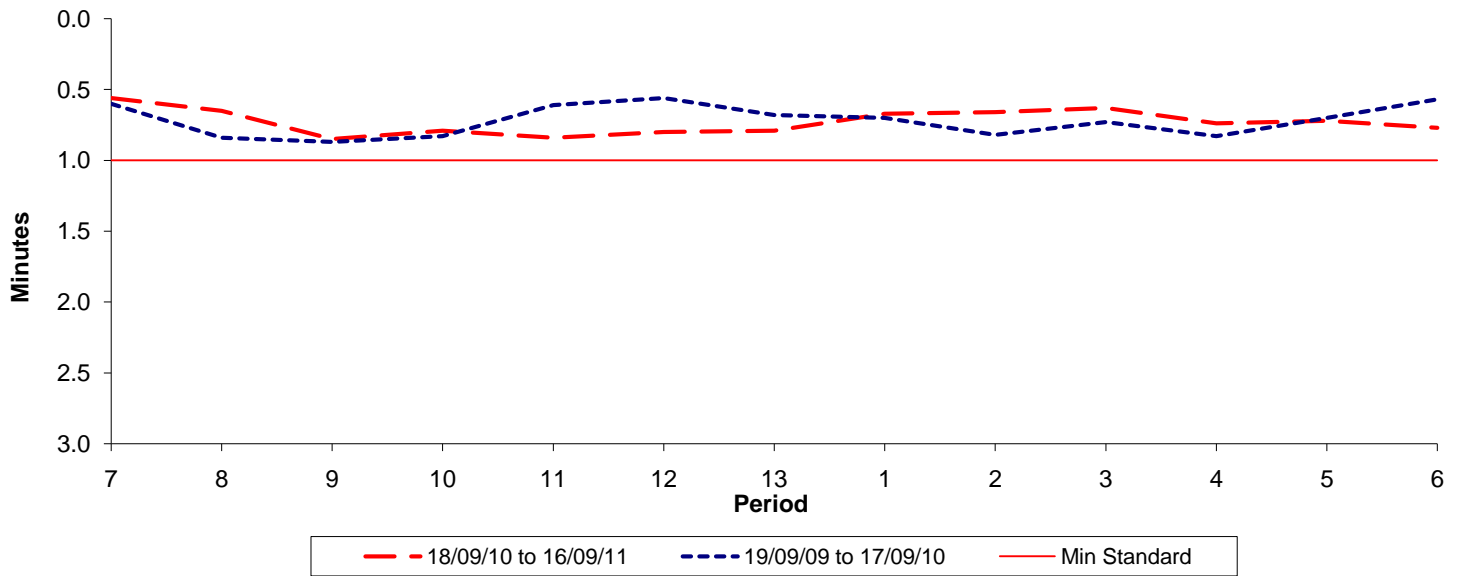




Reliability Performance (High Frequency)

Excess Waiting Time (minutes)

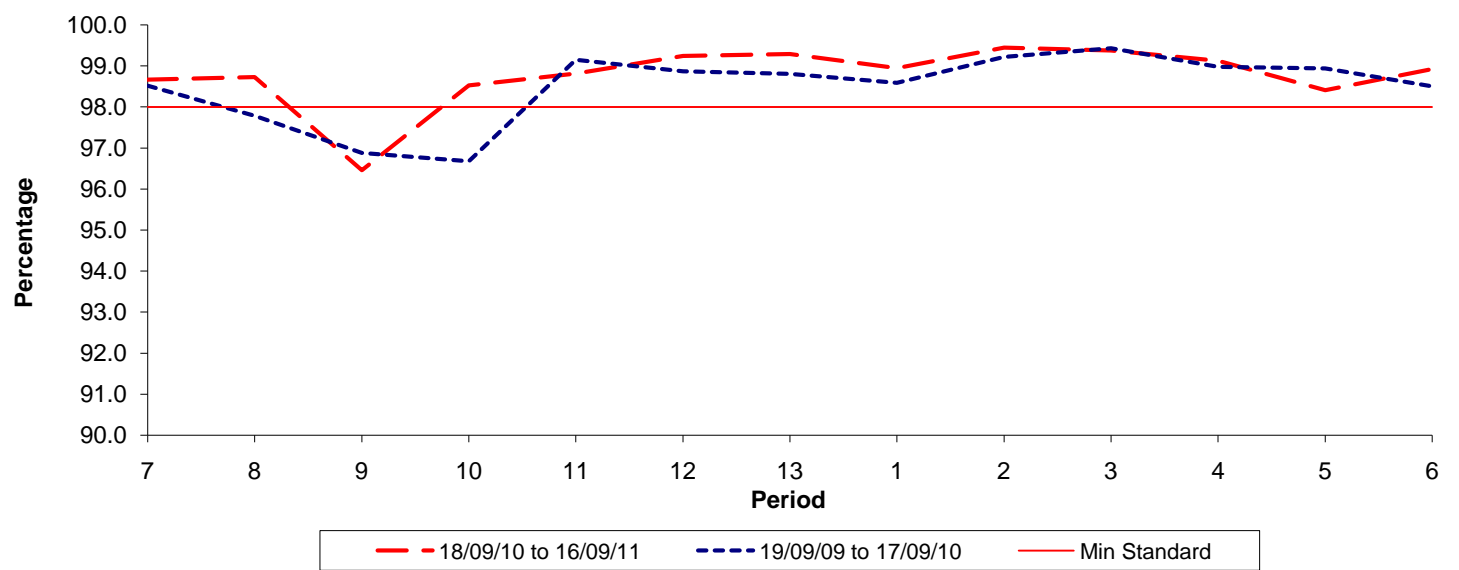


Date Range / Period	7	8	9	10	11	12	13	1	2	3	4	5	6
18/09/10 to 16/09/11	0.56	0.65	0.85	0.79	0.84	0.80	0.79	0.67	0.66	0.63	0.74	0.72	0.77
19/09/09 to 17/09/10	0.60	0.84	0.87	0.83	0.61	0.56	0.68	0.70	0.82	0.73	0.83	0.70	0.57
Min Standard	1.00	1.00	1.00	1.00	1.00	1.00	1.00	1.00	1.00	1.00	1.00	1.00	1.00

Excess Waiting Time figures are based on 12 weeks data

Kilometre Performance

% Kilometres Operated



Date Range / Period	7	8	9	10	11	12	13	1	2	3	4	5	6
18/09/10 to 16/09/11	98.67	98.73	96.46	98.53	98.82	99.25	99.29	98.95	99.45	99.38	99.13	98.41	98.93
19/09/09 to 17/09/10	98.52	97.79	96.88	96.68	99.15	98.87	98.81	98.59	99.22	99.43	98.98	98.94	98.50
Min Standard	98.00	98.00	98.00	98.00	98.00	98.00	98.00	98.00	98.00	98.00	98.00	98.00	98.00

Kilometre figures are based on 4 weeks data