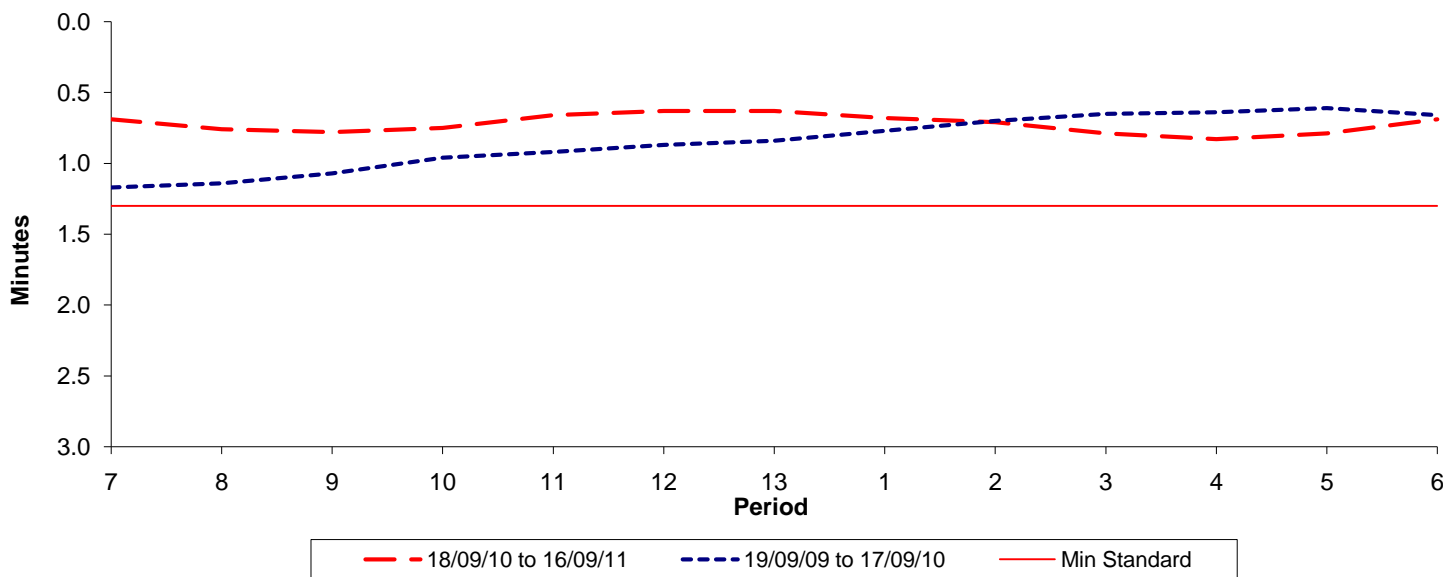




**Reliability Performance ( High Frequency )**

**Excess Waiting Time (minutes)**

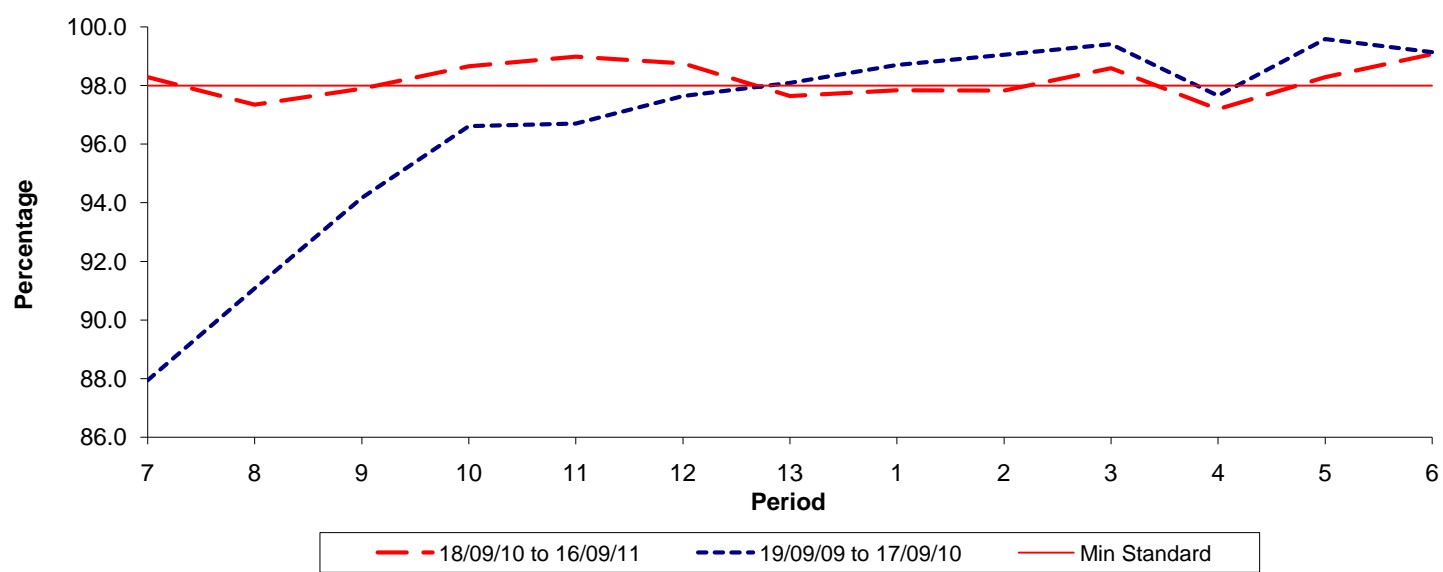


Date Range / Period	7	8	9	10	11	12	13	1	2	3	4	5	6
18/09/10 to 16/09/11	0.69	0.76	0.78	0.75	0.66	0.63	0.63	0.68	0.71	0.79	0.83	0.79	0.69
19/09/09 to 17/09/10	1.17	1.14	1.07	0.96	0.92	0.87	0.84	0.77	0.70	0.65	0.64	0.61	0.66
Min Standard	1.30	1.30	1.30	1.30	1.30	1.30	1.30	1.30	1.30	1.30	1.30	1.30	1.30

Excess Waiting Time figures are based on 12 weeks data

**Kilometre Performance**

**% Kilometres Operated**



Date Range / Period	7	8	9	10	11	12	13	1	2	3	4	5	6
18/09/10 to 16/09/11	98.28	97.34	97.89	98.66	98.99	98.75	97.64	97.84	97.82	98.59	97.19	98.28	99.07
19/09/09 to 17/09/10	87.94	91.08	94.17	96.61	96.70	97.64	98.08	98.70	99.05	99.40	97.65	99.58	99.14
Min Standard	98.00	98.00	98.00	98.00	98.00	98.00	98.00	98.00	98.00	98.00	98.00	98.00	98.00

Kilometre figures are based on 4 weeks data