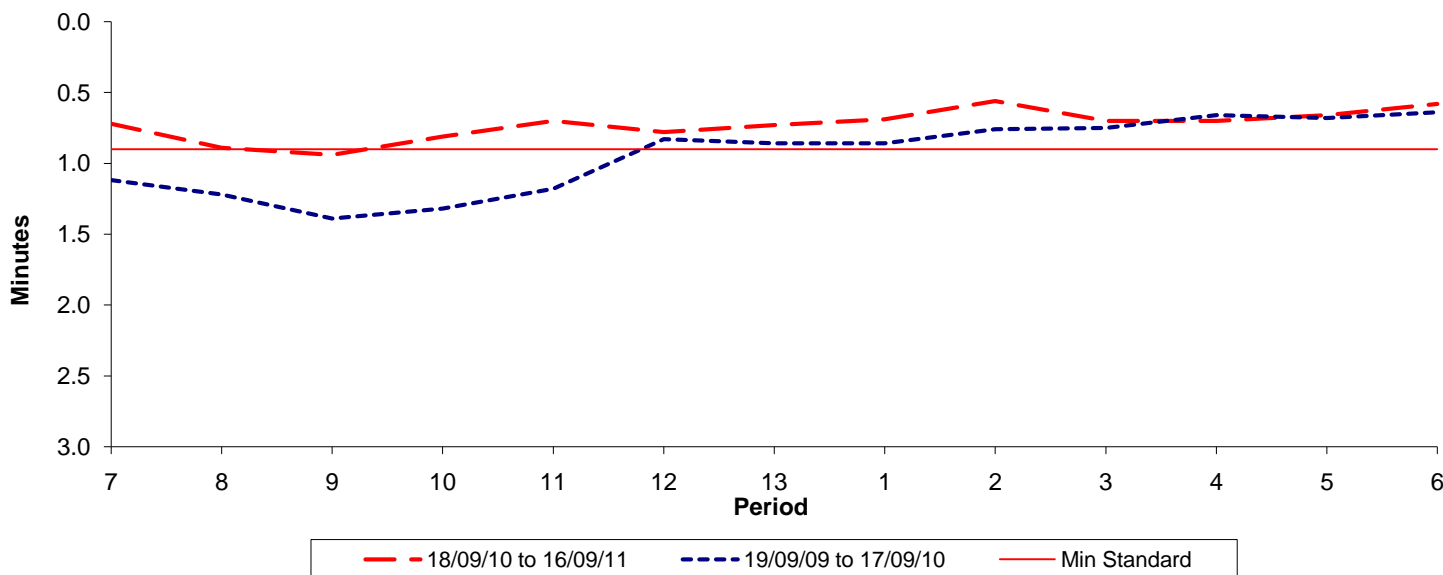




Reliability Performance (High Frequency)

Excess Waiting Time (minutes)

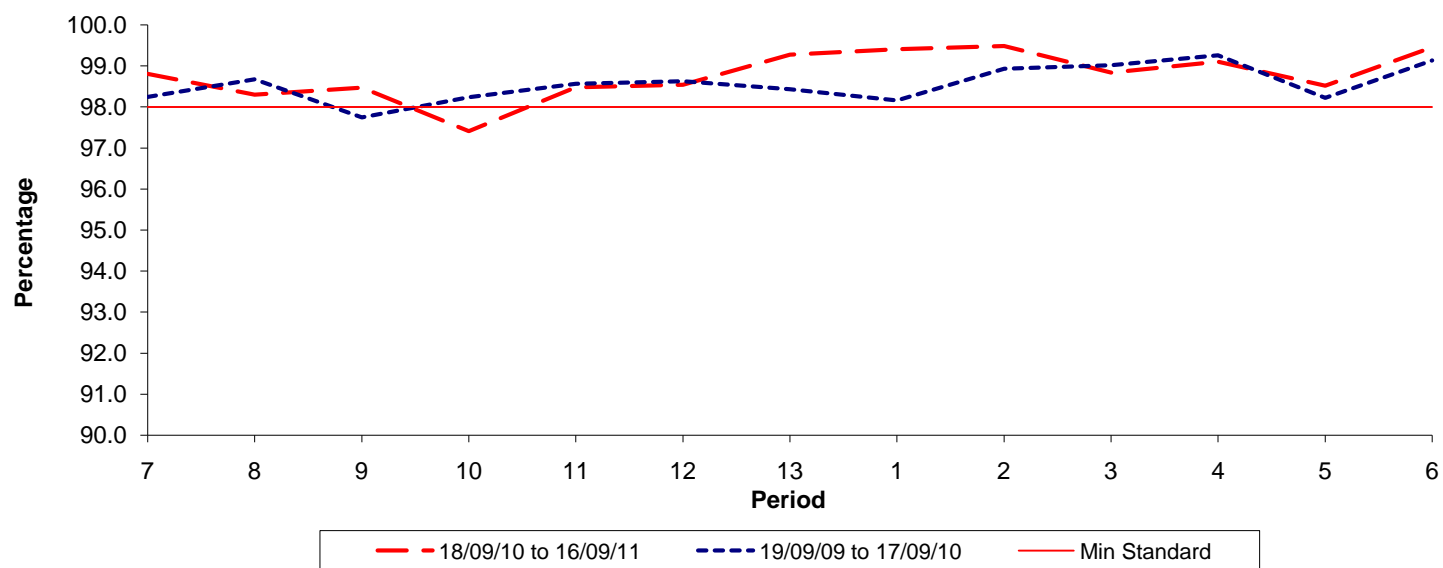


Date Range / Period	7	8	9	10	11	12	13	1	2	3	4	5	6
18/09/10 to 16/09/11	0.72	0.89	0.94	0.81	0.70	0.78	0.73	0.69	0.56	0.70	0.70	0.66	0.58
19/09/09 to 17/09/10	1.12	1.22	1.39	1.32	1.18	0.83	0.86	0.86	0.76	0.75	0.66	0.68	0.64
Min Standard	0.90	0.90	0.90	0.90	0.90	0.90	0.90	0.90	0.90	0.90	0.90	0.90	0.90

Excess Waiting Time figures are based on 12 weeks data

Kilometre Performance

% Kilometres Operated



Date Range / Period	7	8	9	10	11	12	13	1	2	3	4	5	6
18/09/10 to 16/09/11	98.81	98.30	98.47	97.41	98.48	98.54	99.28	99.41	99.49	98.84	99.11	98.52	99.46
19/09/09 to 17/09/10	98.24	98.68	97.75	98.24	98.56	98.63	98.44	98.16	98.94	99.02	99.26	98.22	99.14
Min Standard	98.00	98.00	98.00	98.00	98.00	98.00	98.00	98.00	98.00	98.00	98.00	98.00	98.00

Kilometre figures are based on 4 weeks data