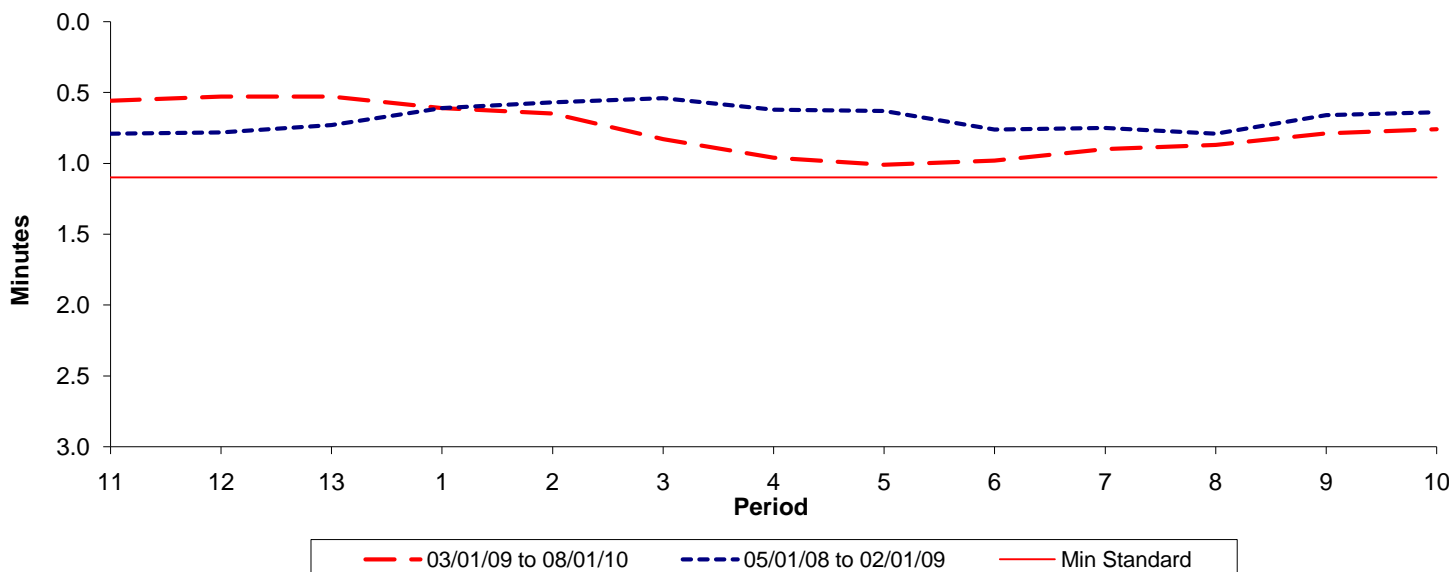




**Reliability Performance ( High Frequency )**

**Excess Waiting Time (minutes)**

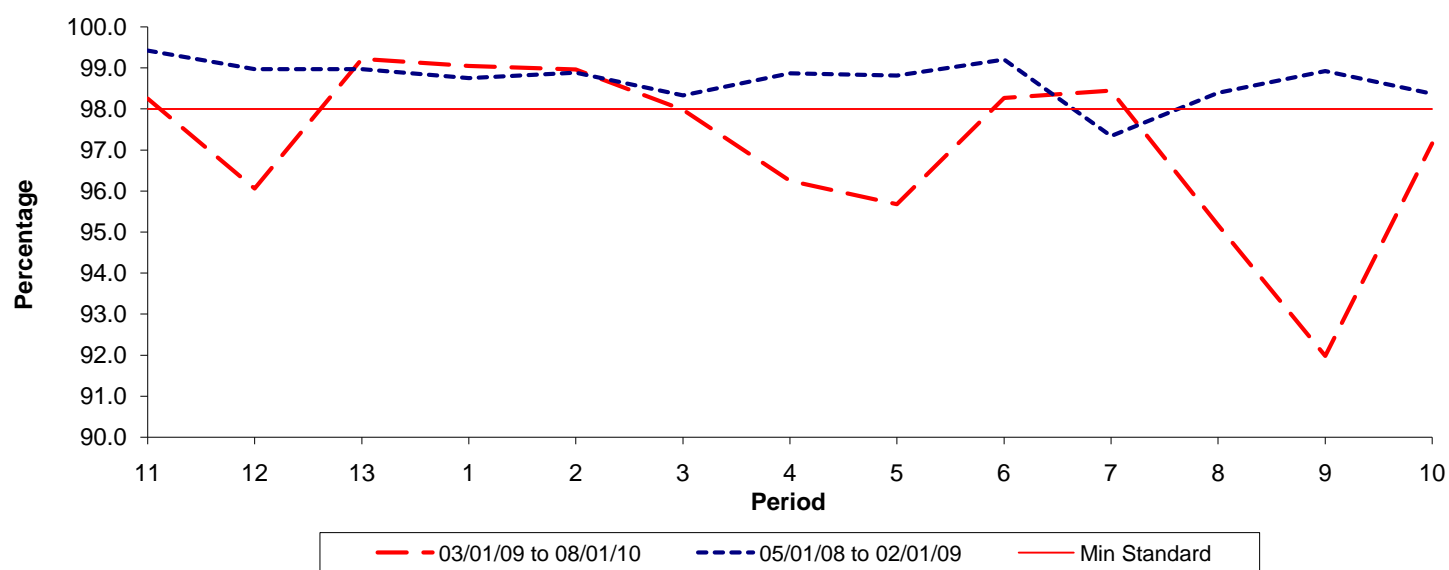


Date Range / Period	11	12	13	1	2	3	4	5	6	7	8	9	10
03/01/09 to 08/01/10	0.56	0.53	0.53	0.61	0.65	0.83	0.96	1.01	0.98	0.90	0.87	0.79	0.76
05/01/08 to 02/01/09	0.79	0.78	0.73	0.61	0.57	0.54	0.62	0.63	0.76	0.75	0.79	0.66	0.64
Min Standard	1.10	1.10	1.10	1.10	1.10	1.10	1.10	1.10	1.10	1.10	1.10	1.10	1.10

Excess Waiting Time figures are based on 12 weeks data

**Kilometre Performance**

**% Kilometres Operated**



Date Range / Period	11	12	13	1	2	3	4	5	6	7	8	9	10
03/01/09 to 08/01/10	98.25	96.06	99.22	99.05	98.96	97.98	96.25	95.68	98.27	98.45	95.17	91.98	97.16
05/01/08 to 02/01/09	99.42	98.97	98.97	98.75	98.88	98.33	98.87	98.81	99.20	97.34	98.39	98.92	98.37
Min Standard	98.00	98.00	98.00	98.00	98.00	98.00	98.00	98.00	98.00	98.00	98.00	98.00	98.00

Kilometre figures are based on 4 weeks data