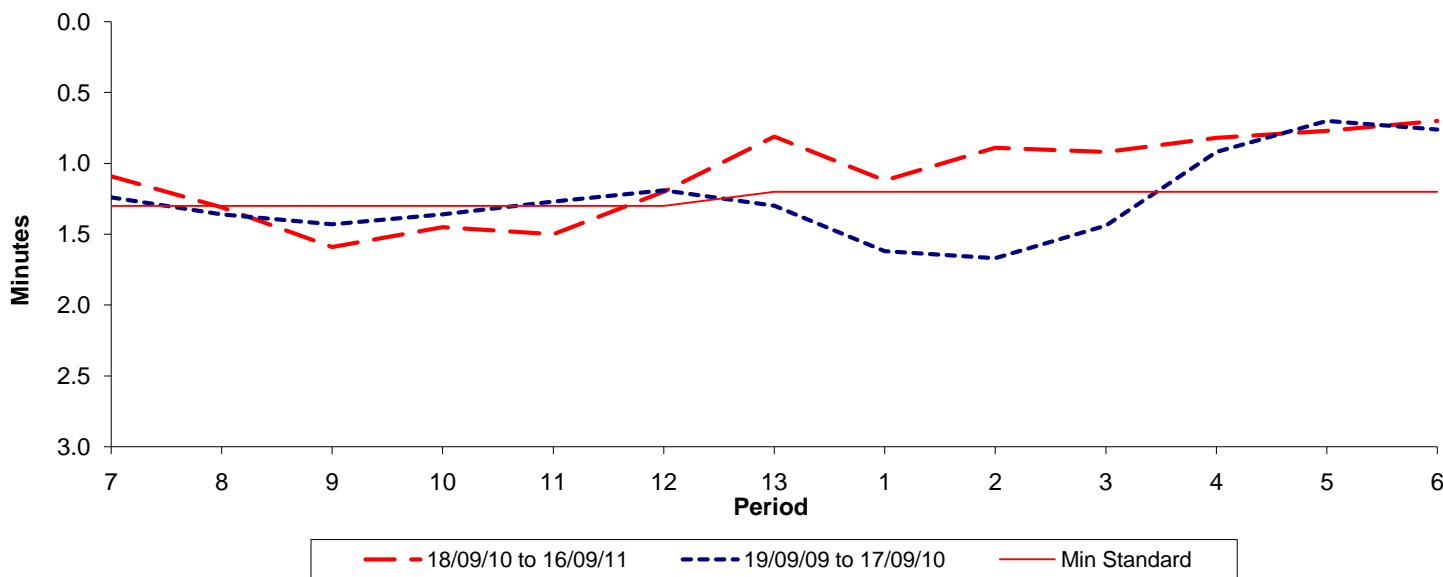




Reliability Performance (High Frequency)

Excess Waiting Time (minutes)

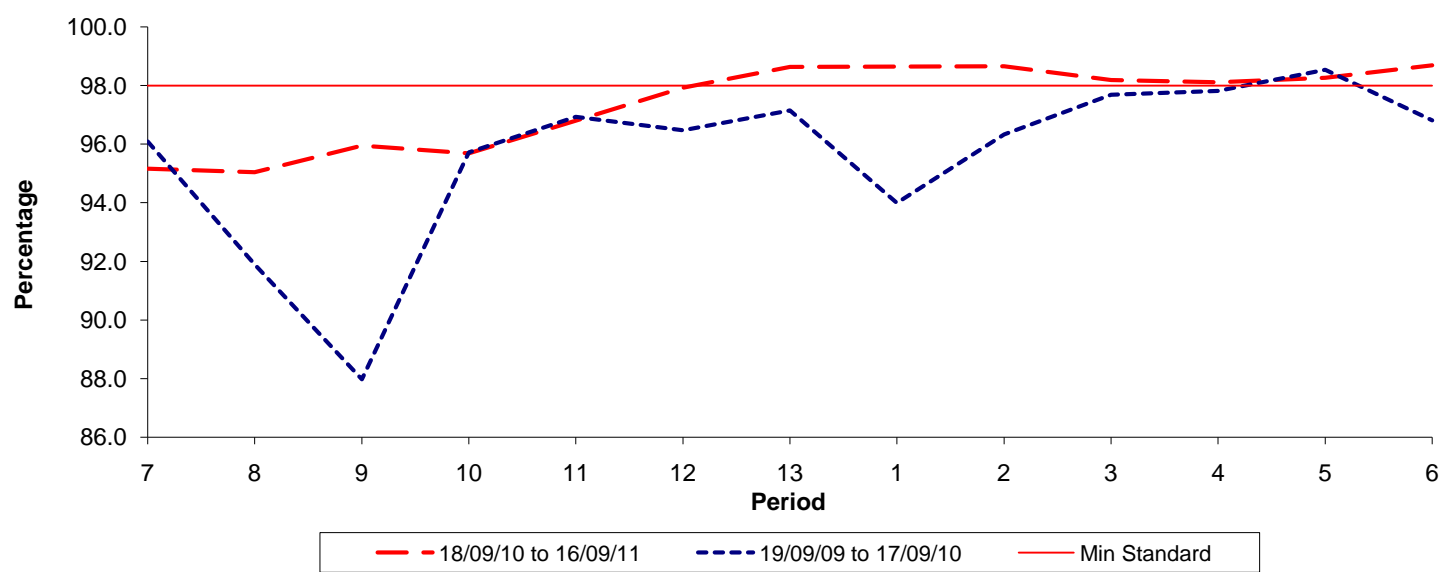


Date Range / Period	7	8	9	10	11	12	13	1	2	3	4	5	6
18/09/10 to 16/09/11	1.09	1.31	1.59	1.45	1.50	1.20	0.81	1.12	0.89	0.92	0.82	0.77	0.70
19/09/09 to 17/09/10	1.24	1.36	1.43	1.36	1.27	1.19	1.30	1.62	1.67	1.44	0.92	0.70	0.76
Min Standard	1.30	1.30	1.30	1.30	1.30	1.30	1.20	1.20	1.20	1.20	1.20	1.20	1.20

Excess Waiting Time figures are based on 12 weeks data

Kilometre Performance

% Kilometres Operated



Date Range / Period	7	8	9	10	11	12	13	1	2	3	4	5	6
18/09/10 to 16/09/11	95.16	95.04	95.95	95.68	96.80	97.93	98.64	98.65	98.66	98.19	98.11	98.26	98.69
19/09/09 to 17/09/10	96.09	91.89	87.97	95.72	96.93	96.47	97.15	93.99	96.33	97.69	97.82	98.54	96.81
Min Standard	98.00	98.00	98.00	98.00	98.00	98.00	98.00	98.00	98.00	98.00	98.00	98.00	98.00

Kilometre figures are based on 4 weeks data