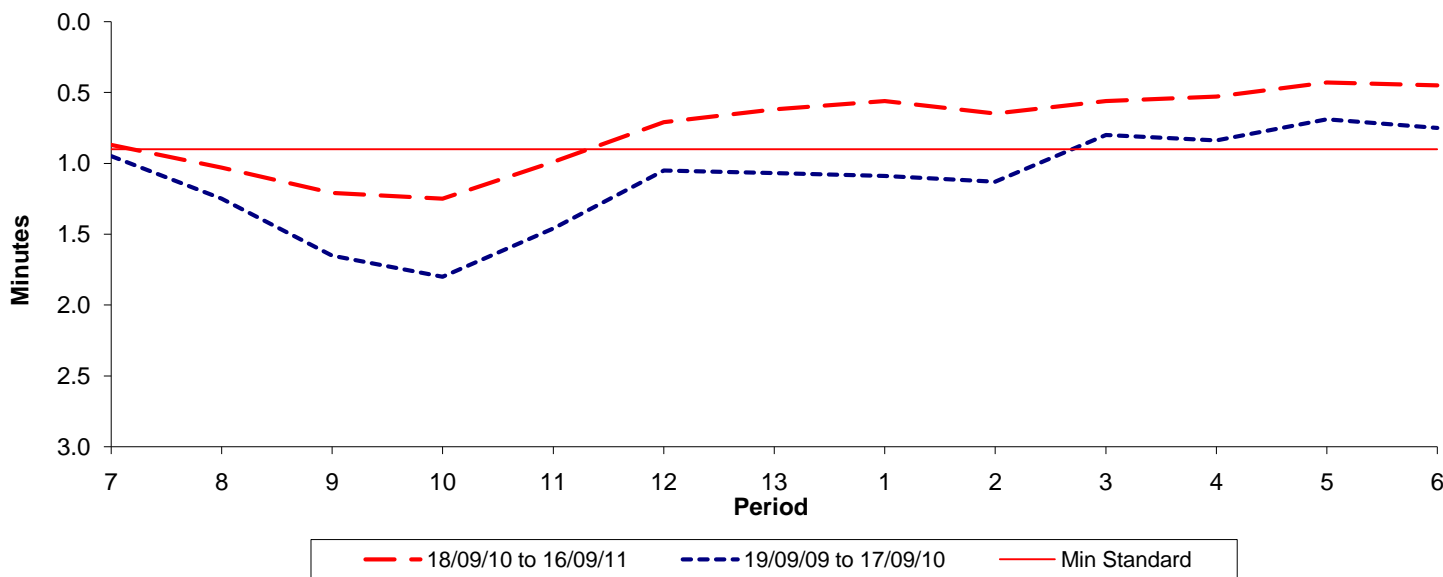




**Reliability Performance ( High Frequency )**

**Excess Waiting Time (minutes)**

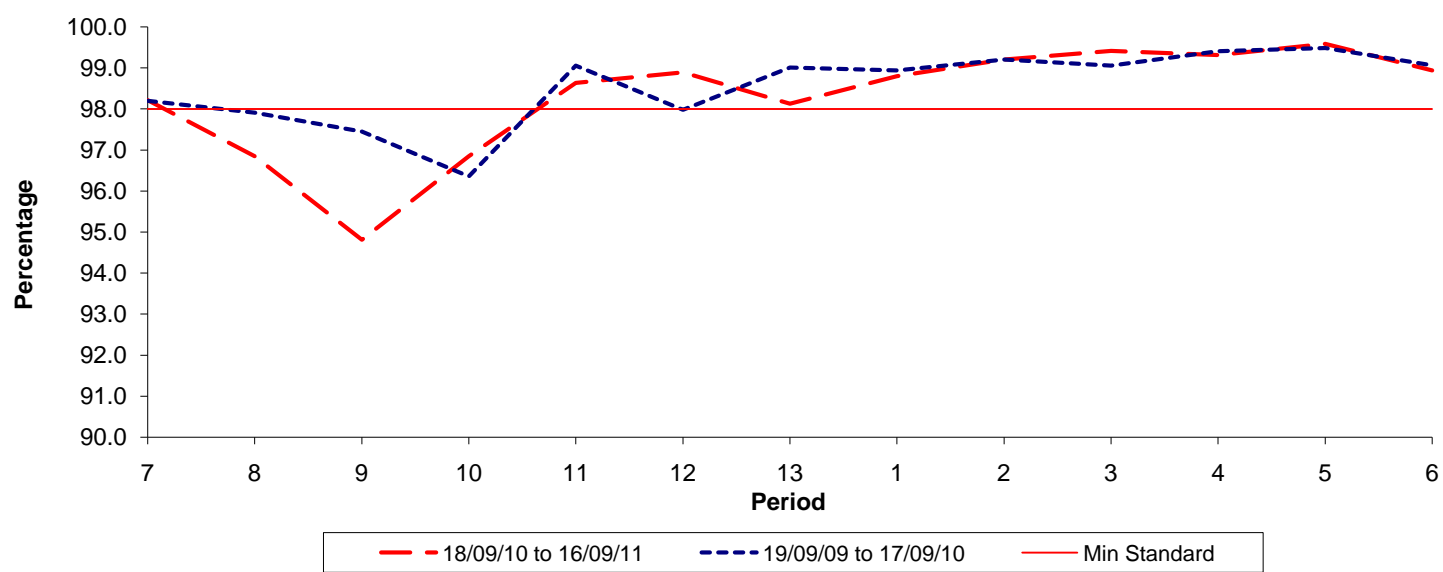


Date Range / Period	7	8	9	10	11	12	13	1	2	3	4	5	6
18/09/10 to 16/09/11	0.87	1.03	1.21	1.25	0.99	0.71	0.62	0.56	0.65	0.56	0.53	0.43	0.45
19/09/09 to 17/09/10	0.95	1.25	1.65	1.80	1.46	1.05	1.07	1.09	1.13	0.80	0.84	0.69	0.75
Min Standard	0.90	0.90	0.90	0.90	0.90	0.90	0.90	0.90	0.90	0.90	0.90	0.90	0.90

Excess Waiting Time figures are based on 12 weeks data

**Kilometre Performance**

**% Kilometres Operated**



Date Range / Period	7	8	9	10	11	12	13	1	2	3	4	5	6
18/09/10 to 16/09/11	98.21	96.85	94.81	96.85	98.63	98.90	98.13	98.80	99.21	99.42	99.32	99.59	98.94
19/09/09 to 17/09/10	98.20	97.91	97.45	96.36	99.06	97.98	99.01	98.94	99.20	99.06	99.41	99.49	99.07
Min Standard	98.00	98.00	98.00	98.00	98.00	98.00	98.00	98.00	98.00	98.00	98.00	98.00	98.00

Kilometre figures are based on 4 weeks data