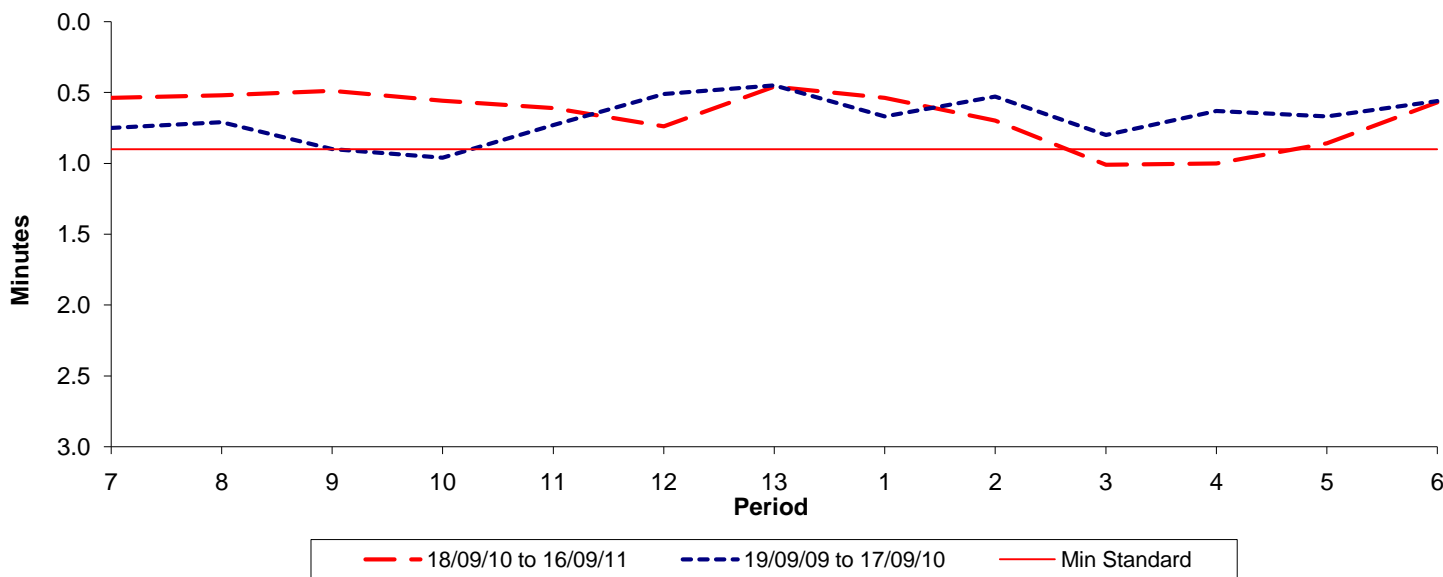




Reliability Performance (High Frequency)

Excess Waiting Time (minutes)

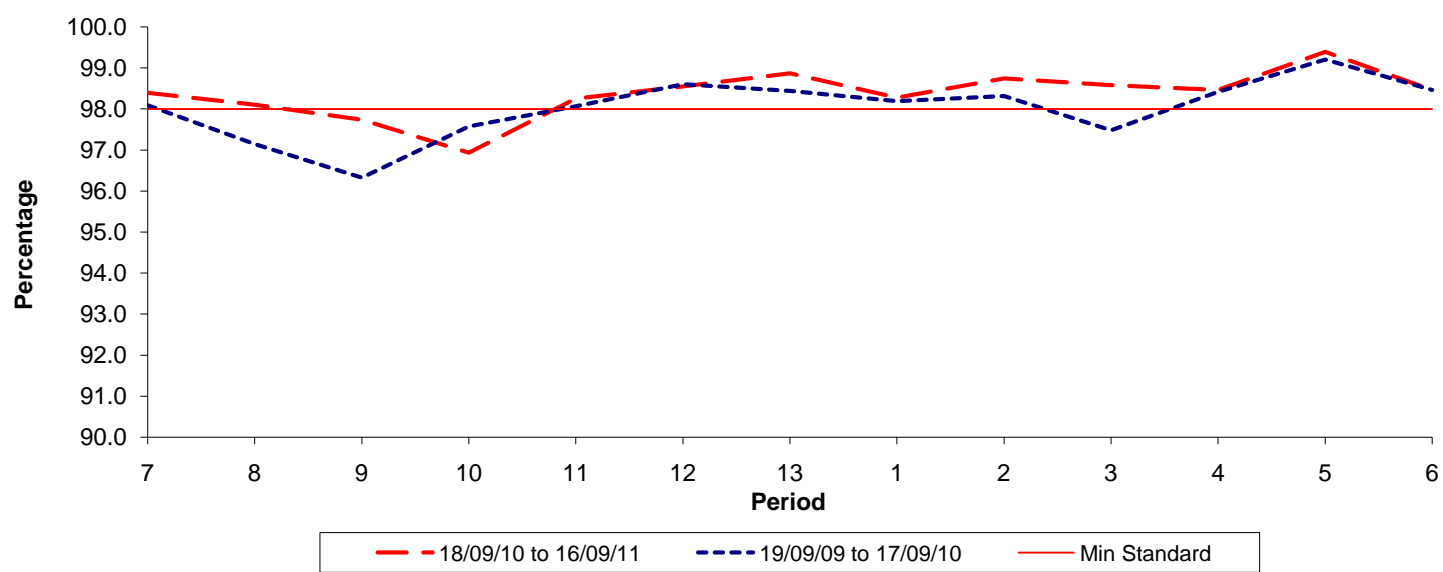


| Date Range / Period | 7 | 8 | 9 | 10 | 11 | 12 | 13 | 1 | 2 | 3 | 4 | 5 | 6 |
|----------------------|------|------|------|------|------|------|------|------|------|------|------|------|------|
| 18/09/10 to 16/09/11 | 0.54 | 0.52 | 0.49 | 0.56 | 0.61 | 0.74 | 0.46 | 0.54 | 0.70 | 1.01 | 1.00 | 0.86 | 0.57 |
| 19/09/09 to 17/09/10 | 0.75 | 0.71 | 0.90 | 0.96 | 0.73 | 0.51 | 0.45 | 0.67 | 0.53 | 0.80 | 0.63 | 0.67 | 0.56 |
| Min Standard | 0.90 | 0.90 | 0.90 | 0.90 | 0.90 | 0.90 | 0.90 | 0.90 | 0.90 | 0.90 | 0.90 | 0.90 | 0.90 |

Excess Waiting Time figures are based on 12 weeks data

Kilometre Performance

% Kilometres Operated



| Date Range / Period | 7 | 8 | 9 | 10 | 11 | 12 | 13 | 1 | 2 | 3 | 4 | 5 | 6 |
|----------------------|-------|-------|-------|-------|-------|-------|-------|-------|-------|-------|-------|-------|-------|
| 18/09/10 to 16/09/11 | 98.39 | 98.11 | 97.74 | 96.94 | 98.25 | 98.55 | 98.87 | 98.28 | 98.74 | 98.58 | 98.46 | 99.39 | 98.46 |
| 19/09/09 to 17/09/10 | 98.09 | 97.14 | 96.32 | 97.57 | 98.06 | 98.60 | 98.44 | 98.19 | 98.31 | 97.48 | 98.42 | 99.20 | 98.46 |
| Min Standard | 98.00 | 98.00 | 98.00 | 98.00 | 98.00 | 98.00 | 98.00 | 98.00 | 98.00 | 98.00 | 98.00 | 98.00 | 98.00 |

Kilometre figures are based on 4 weeks data