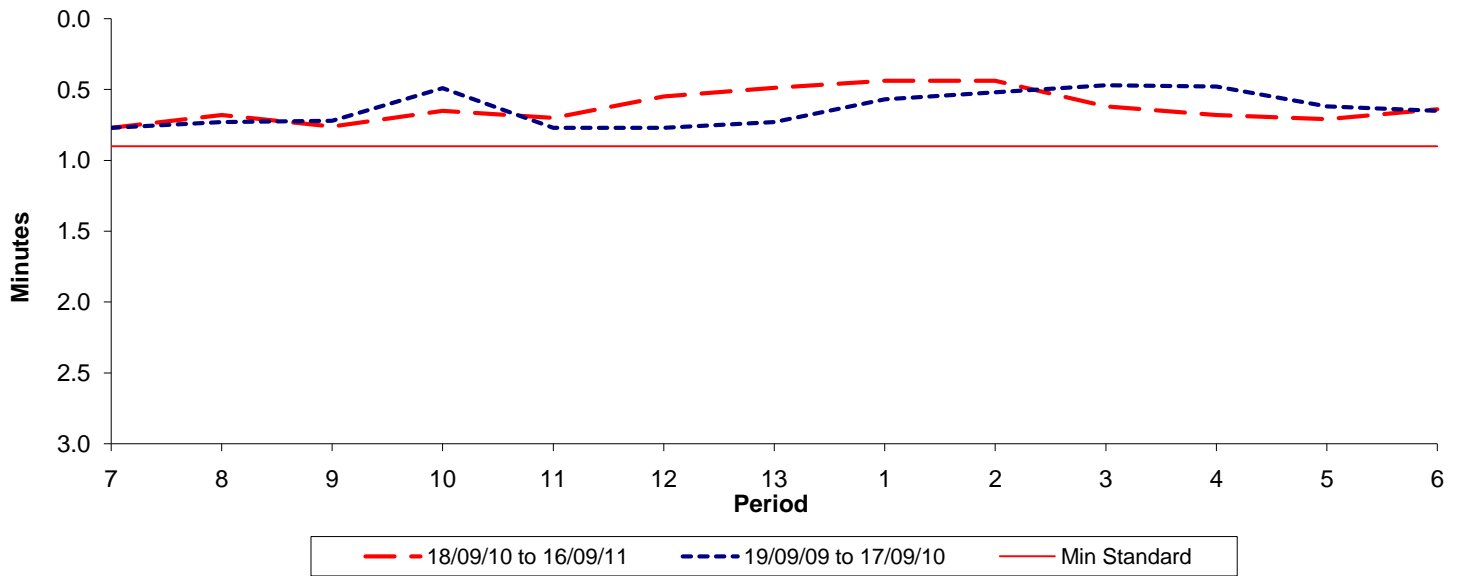




Reliability Performance (High Frequency)

Excess Waiting Time (minutes)

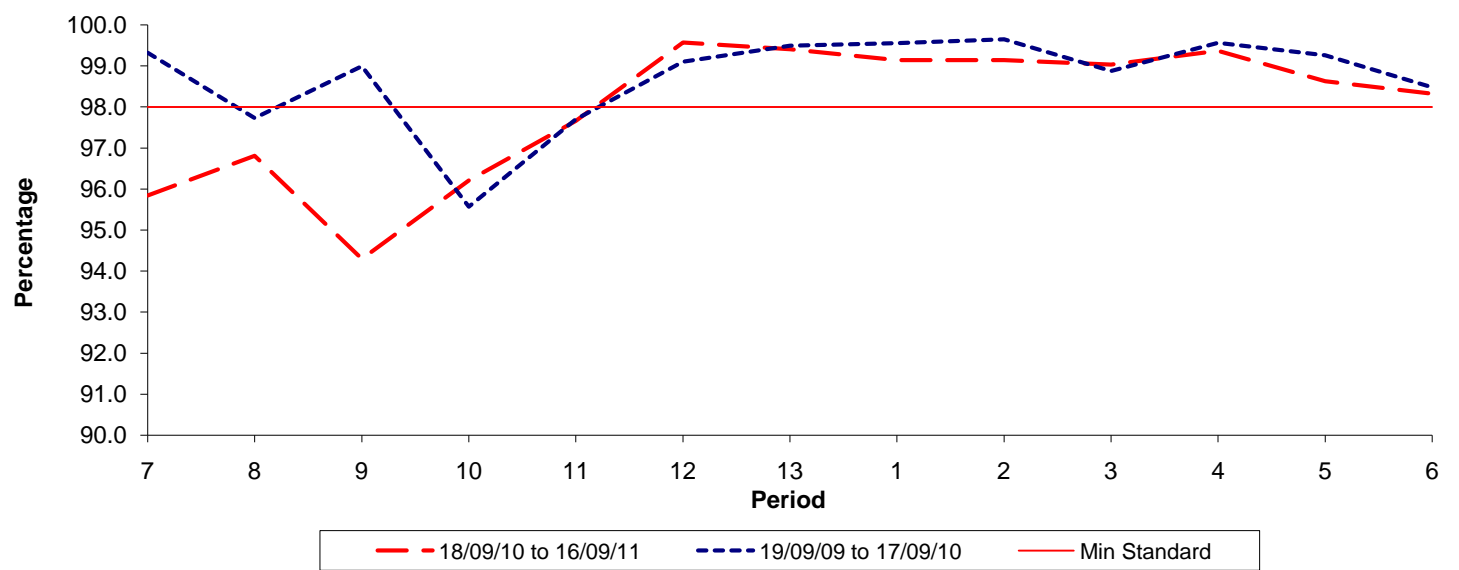


| Date Range / Period | 7 | 8 | 9 | 10 | 11 | 12 | 13 | 1 | 2 | 3 | 4 | 5 | 6 |
|----------------------|------|------|------|------|------|------|------|------|------|------|------|------|------|
| 18/09/10 to 16/09/11 | 0.77 | 0.68 | 0.76 | 0.65 | 0.70 | 0.55 | 0.49 | 0.44 | 0.44 | 0.62 | 0.68 | 0.71 | 0.64 |
| 19/09/09 to 17/09/10 | 0.77 | 0.73 | 0.72 | 0.49 | 0.77 | 0.77 | 0.73 | 0.57 | 0.52 | 0.47 | 0.48 | 0.62 | 0.65 |
| Min Standard | 0.90 | 0.90 | 0.90 | 0.90 | 0.90 | 0.90 | 0.90 | 0.90 | 0.90 | 0.90 | 0.90 | 0.90 | 0.90 |

Excess Waiting Time figures are based on 12 weeks data

Kilometre Performance

% Kilometres Operated



| Date Range / Period | 7 | 8 | 9 | 10 | 11 | 12 | 13 | 1 | 2 | 3 | 4 | 5 | 6 |
|----------------------|-------|-------|-------|-------|-------|-------|-------|-------|-------|-------|-------|-------|-------|
| 18/09/10 to 16/09/11 | 95.84 | 96.81 | 94.30 | 96.21 | 97.66 | 99.57 | 99.41 | 99.14 | 99.14 | 99.03 | 99.37 | 98.63 | 98.32 |
| 19/09/09 to 17/09/10 | 99.32 | 97.73 | 98.99 | 95.57 | 97.70 | 99.10 | 99.49 | 99.56 | 99.65 | 98.87 | 99.57 | 99.26 | 98.48 |
| Min Standard | 98.00 | 98.00 | 98.00 | 98.00 | 98.00 | 98.00 | 98.00 | 98.00 | 98.00 | 98.00 | 98.00 | 98.00 | 98.00 |

Kilometre figures are based on 4 weeks data