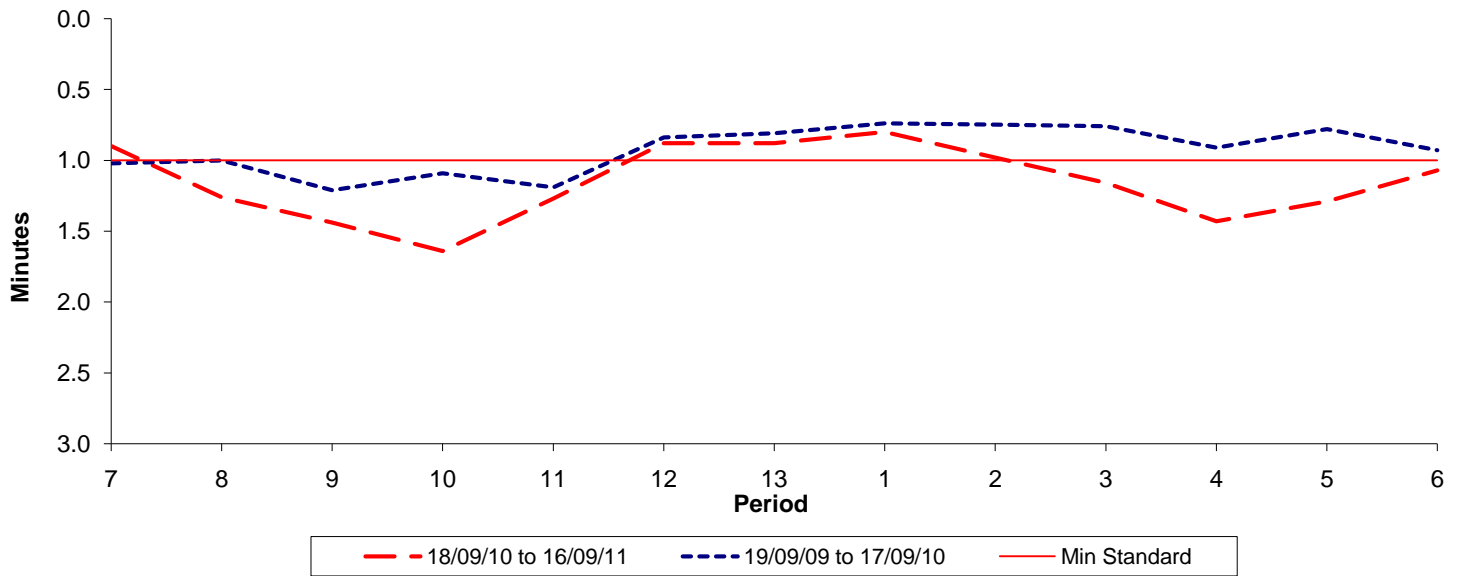




Reliability Performance (High Frequency)

Excess Waiting Time (minutes)

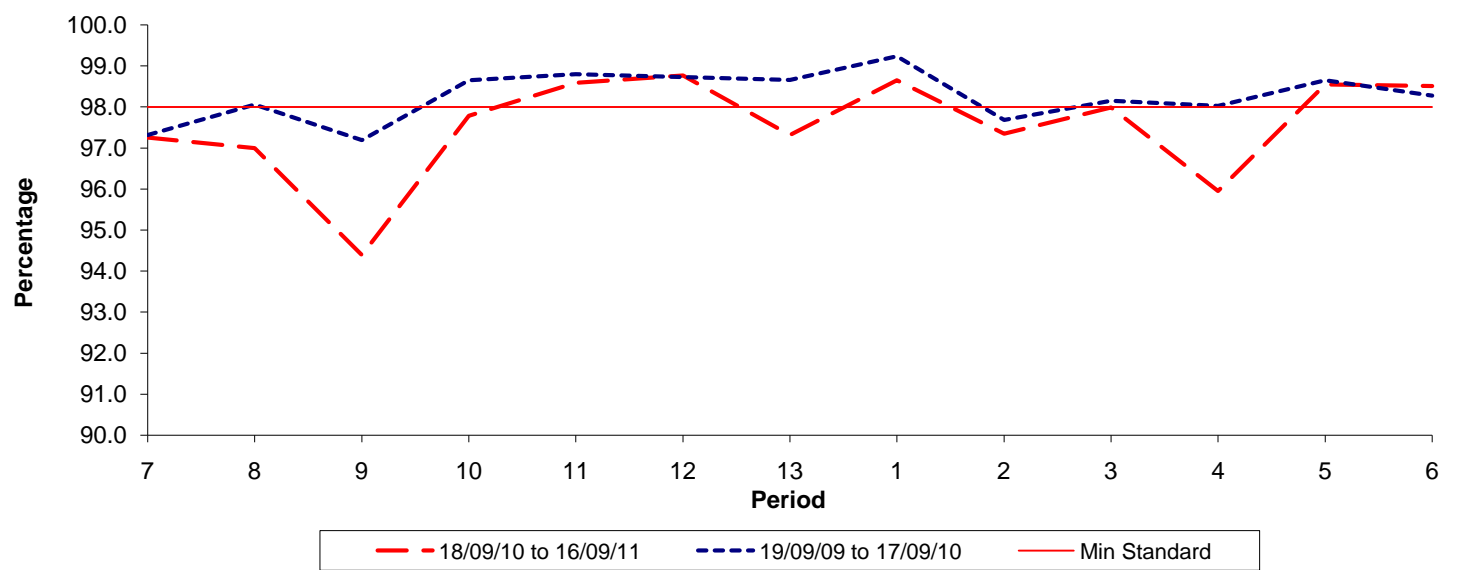


Date Range / Period	7	8	9	10	11	12	13	1	2	3	4	5	6
18/09/10 to 16/09/11	0.90	1.26	1.44	1.64	1.27	0.88	0.88	0.80	0.98	1.16	1.43	1.29	1.07
19/09/09 to 17/09/10	1.02	1.00	1.21	1.09	1.19	0.84	0.81	0.74	0.75	0.76	0.91	0.78	0.93
Min Standard	1.00	1.00	1.00	1.00	1.00	1.00	1.00	1.00	1.00	1.00	1.00	1.00	1.00

Excess Waiting Time figures are based on 12 weeks data

Kilometre Performance

% Kilometres Operated



Date Range / Period	7	8	9	10	11	12	13	1	2	3	4	5	6
18/09/10 to 16/09/11	97.25	97.00	94.39	97.79	98.59	98.77	97.32	98.65	97.35	97.99	95.95	98.55	98.51
19/09/09 to 17/09/10	97.31	98.06	97.19	98.65	98.80	98.73	98.66	99.24	97.68	98.16	98.03	98.65	98.28
Min Standard	98.00	98.00	98.00	98.00	98.00	98.00	98.00	98.00	98.00	98.00	98.00	98.00	98.00

Kilometre figures are based on 4 weeks data