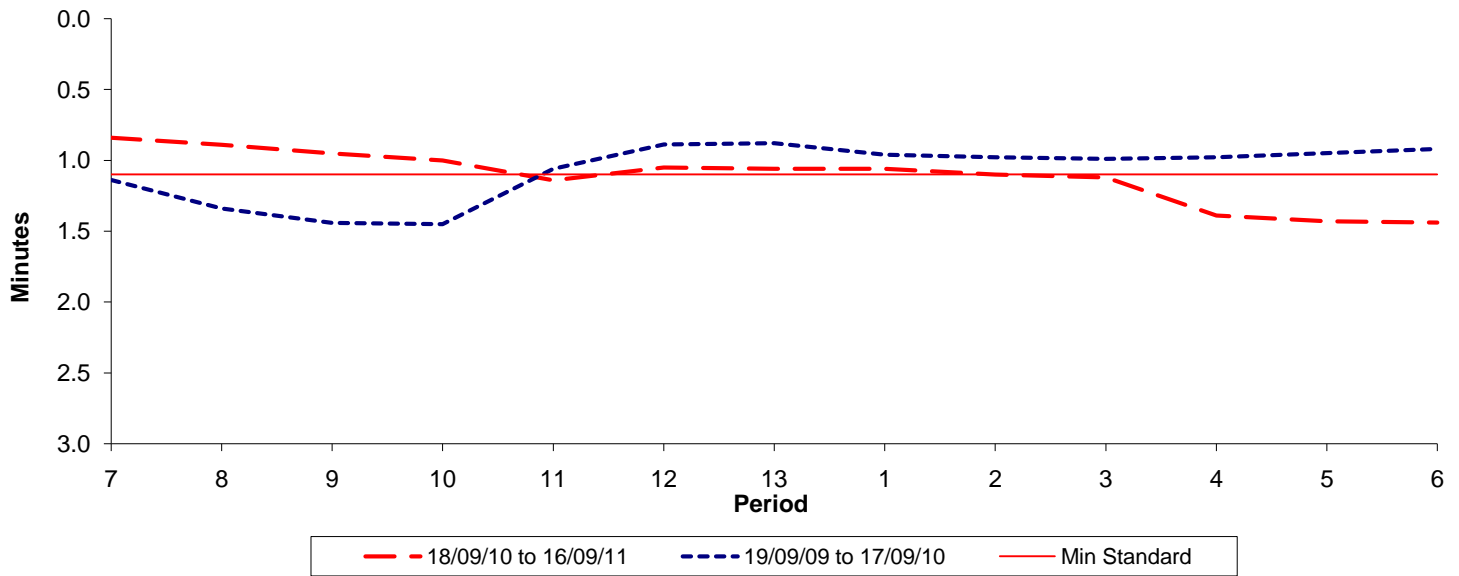




Reliability Performance (High Frequency)

Excess Waiting Time (minutes)

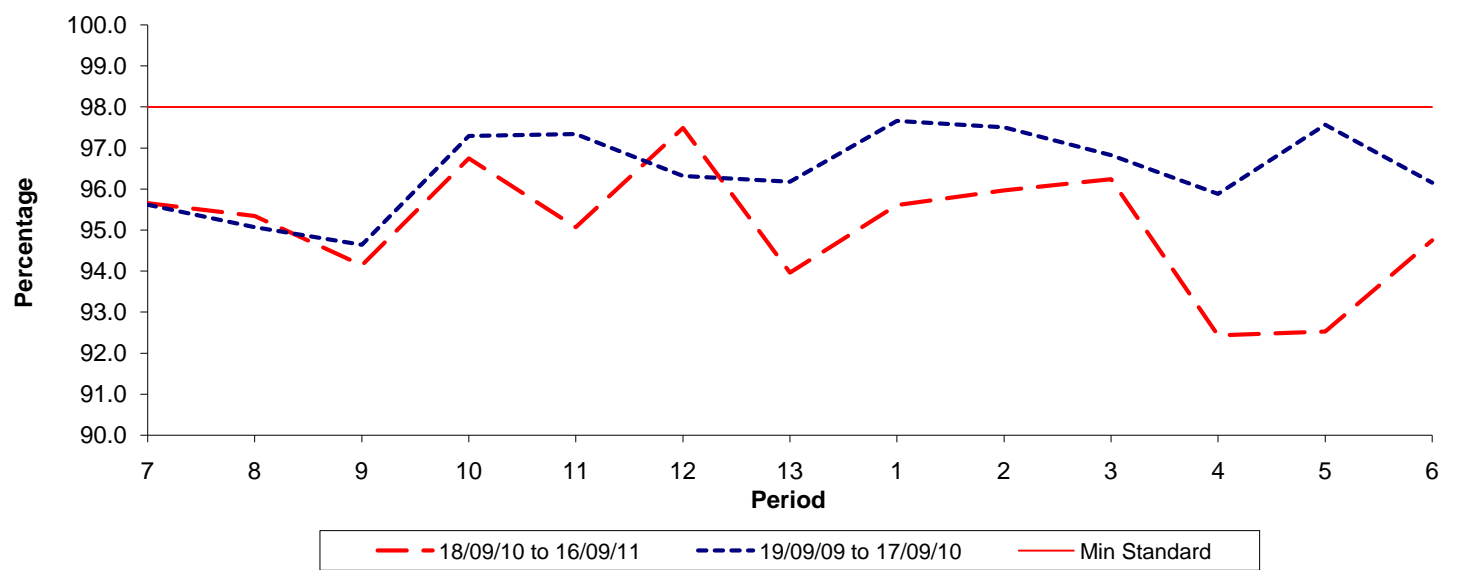


Date Range / Period	7	8	9	10	11	12	13	1	2	3	4	5	6
18/09/10 to 16/09/11	0.84	0.89	0.95	1.00	1.14	1.05	1.06	1.06	1.10	1.12	1.39	1.43	1.44
19/09/09 to 17/09/10	1.14	1.34	1.44	1.45	1.06	0.89	0.88	0.96	0.98	0.99	0.98	0.95	0.92
Min Standard	1.10	1.10	1.10	1.10	1.10	1.10	1.10	1.10	1.10	1.10	1.10	1.10	1.10

Excess Waiting Time figures are based on 12 weeks data

Kilometre Performance

% Kilometres Operated



Date Range / Period	7	8	9	10	11	12	13	1	2	3	4	5	6
18/09/10 to 16/09/11	95.66	95.34	94.14	96.75	95.07	97.49	93.96	95.61	95.97	96.24	92.43	92.52	94.75
19/09/09 to 17/09/10	95.62	95.07	94.64	97.29	97.34	96.32	96.18	97.66	97.50	96.83	95.88	97.56	96.16
Min Standard	98.00	98.00	98.00	98.00	98.00	98.00	98.00	98.00	98.00	98.00	98.00	98.00	98.00

Kilometre figures are based on 4 weeks data