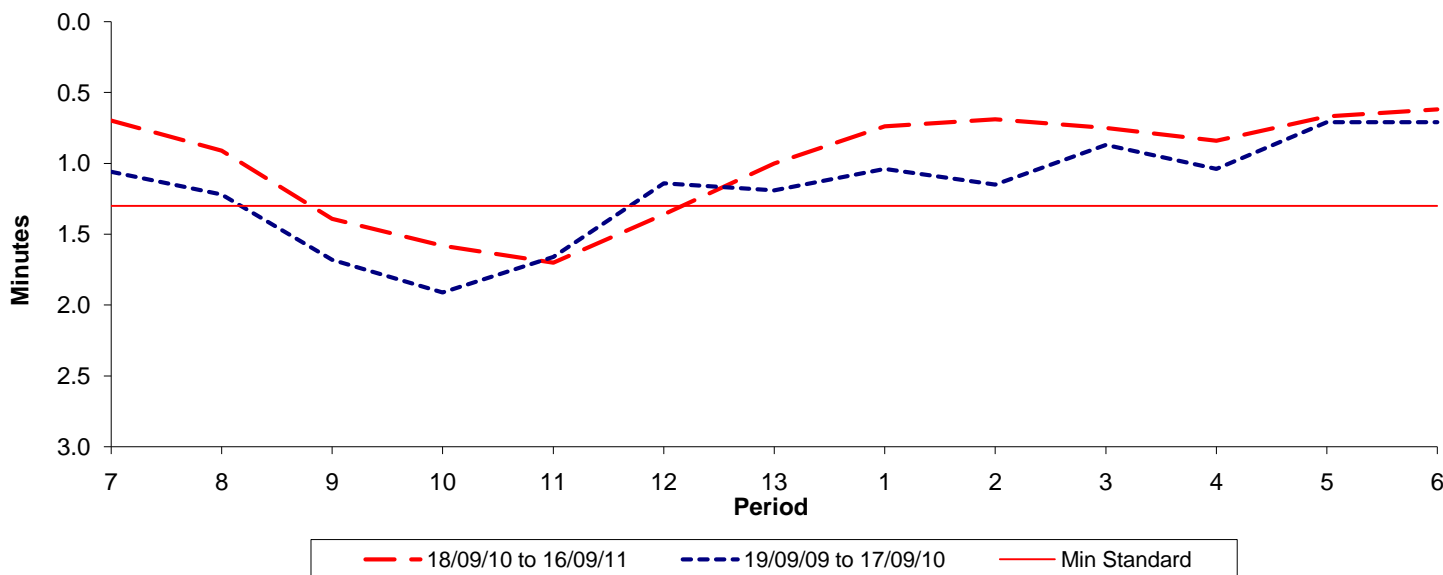




**Reliability Performance ( High Frequency )**

**Excess Waiting Time (minutes)**

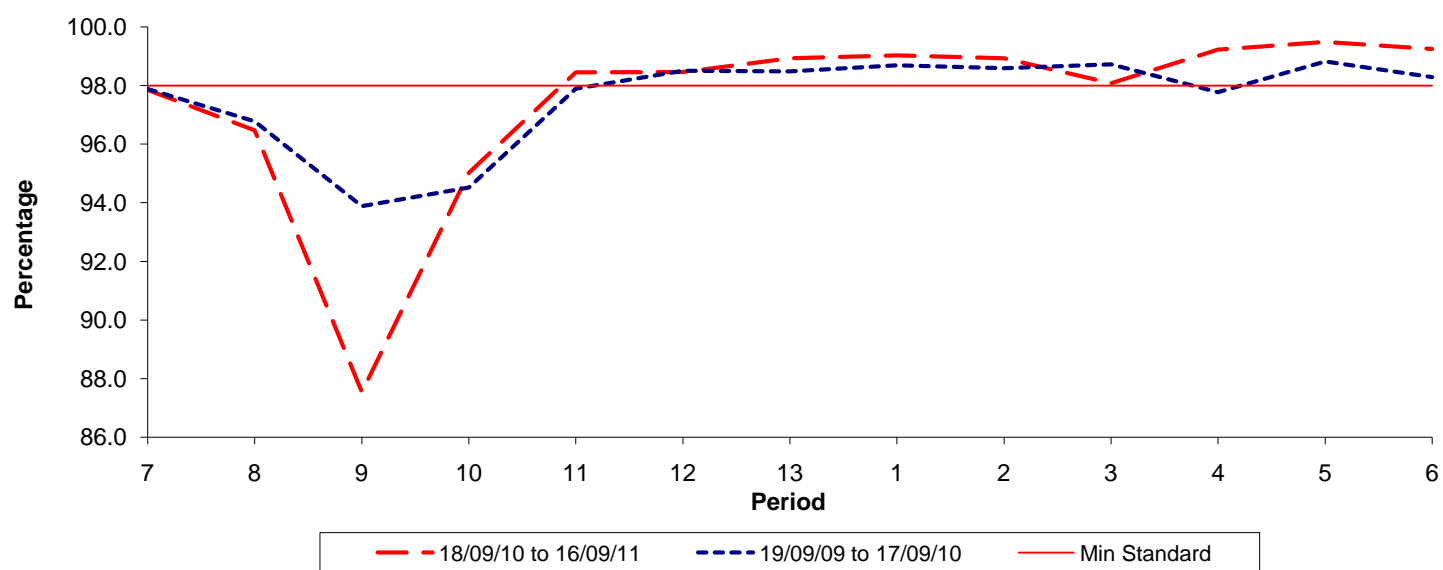


Date Range / Period	7	8	9	10	11	12	13	1	2	3	4	5	6
18/09/10 to 16/09/11	0.70	0.91	1.39	1.58	1.70	1.36	1.00	0.74	0.69	0.75	0.84	0.67	0.62
19/09/09 to 17/09/10	1.06	1.22	1.68	1.91	1.66	1.14	1.19	1.04	1.15	0.87	1.04	0.71	0.71
Min Standard	1.30	1.30	1.30	1.30	1.30	1.30	1.30	1.30	1.30	1.30	1.30	1.30	1.30

Excess Waiting Time figures are based on 12 weeks data

**Kilometre Performance**

**% Kilometres Operated**



Date Range / Period	7	8	9	10	11	12	13	1	2	3	4	5	6
18/09/10 to 16/09/11	97.85	96.48	87.54	95.02	98.45	98.46	98.93	99.03	98.93	98.08	99.23	99.49	99.25
19/09/09 to 17/09/10	97.88	96.78	93.89	94.52	97.89	98.50	98.48	98.69	98.59	98.72	97.77	98.82	98.29
Min Standard	98.00	98.00	98.00	98.00	98.00	98.00	98.00	98.00	98.00	98.00	98.00	98.00	98.00

Kilometre figures are based on 4 weeks data