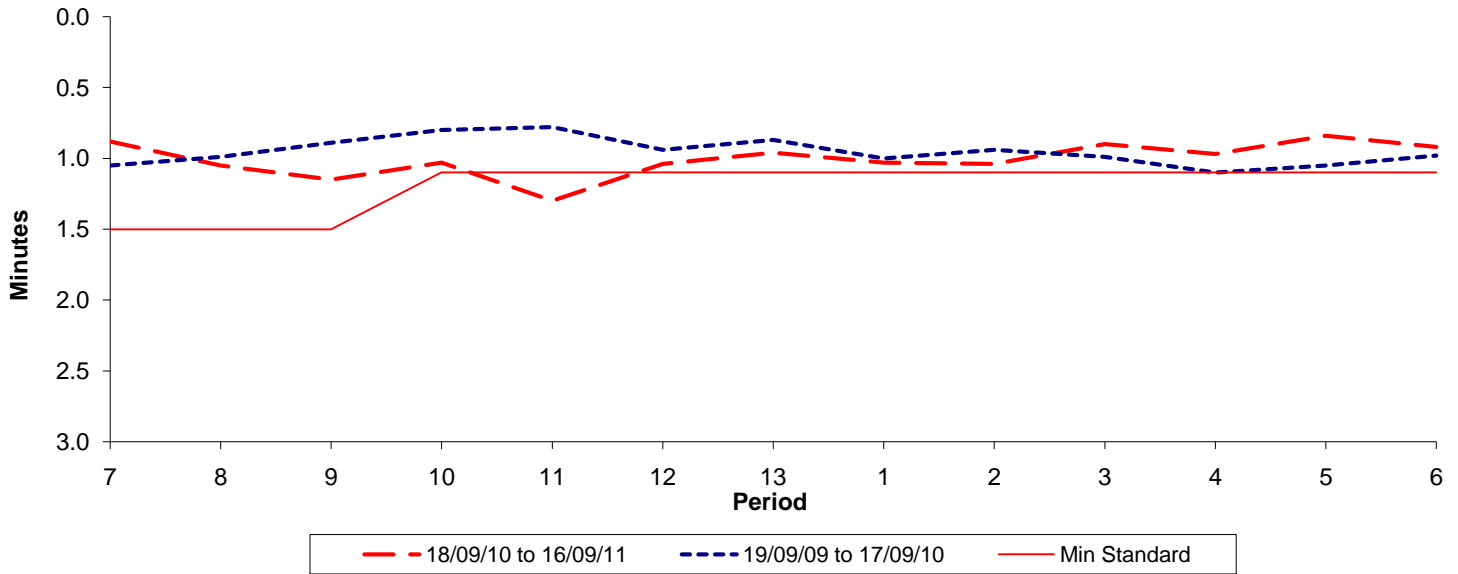




Reliability Performance (High Frequency)

Excess Waiting Time (minutes)

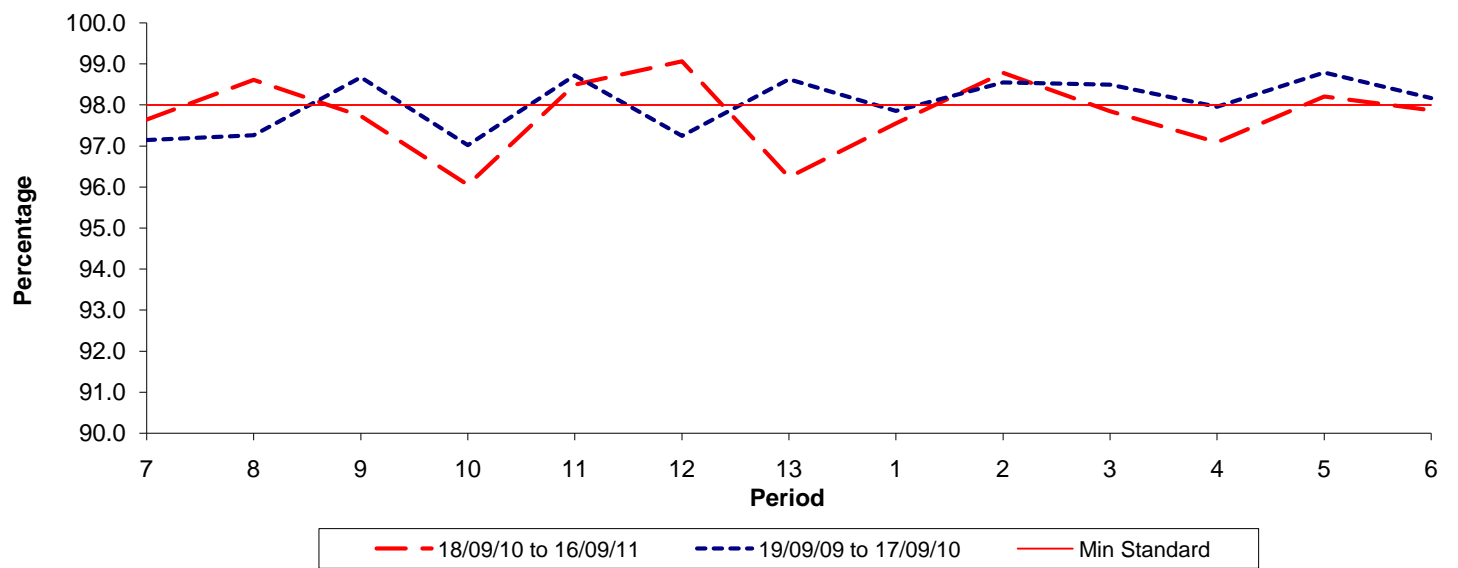


Date Range / Period	7	8	9	10	11	12	13	1	2	3	4	5	6
18/09/10 to 16/09/11	0.88	1.05	1.15	1.03	1.30	1.04	0.96	1.03	1.04	0.90	0.97	0.84	0.92
19/09/09 to 17/09/10	1.05	0.99	0.89	0.80	0.78	0.94	0.87	1.00	0.94	0.99	1.10	1.05	0.98
Min Standard	1.50	1.50	1.50	1.10	1.10	1.10	1.10	1.10	1.10	1.10	1.10	1.10	1.10

Excess Waiting Time figures are based on 12 weeks data

Kilometre Performance

% Kilometres Operated



Date Range / Period	7	8	9	10	11	12	13	1	2	3	4	5	6
18/09/10 to 16/09/11	97.65	98.61	97.73	96.05	98.49	99.06	96.24	97.55	98.78	97.85	97.09	98.21	97.87
19/09/09 to 17/09/10	97.14	97.26	98.68	97.02	98.72	97.25	98.63	97.85	98.55	98.50	97.96	98.79	98.17
Min Standard	98.00	98.00	98.00	98.00	98.00	98.00	98.00	98.00	98.00	98.00	98.00	98.00	98.00

Kilometre figures are based on 4 weeks data