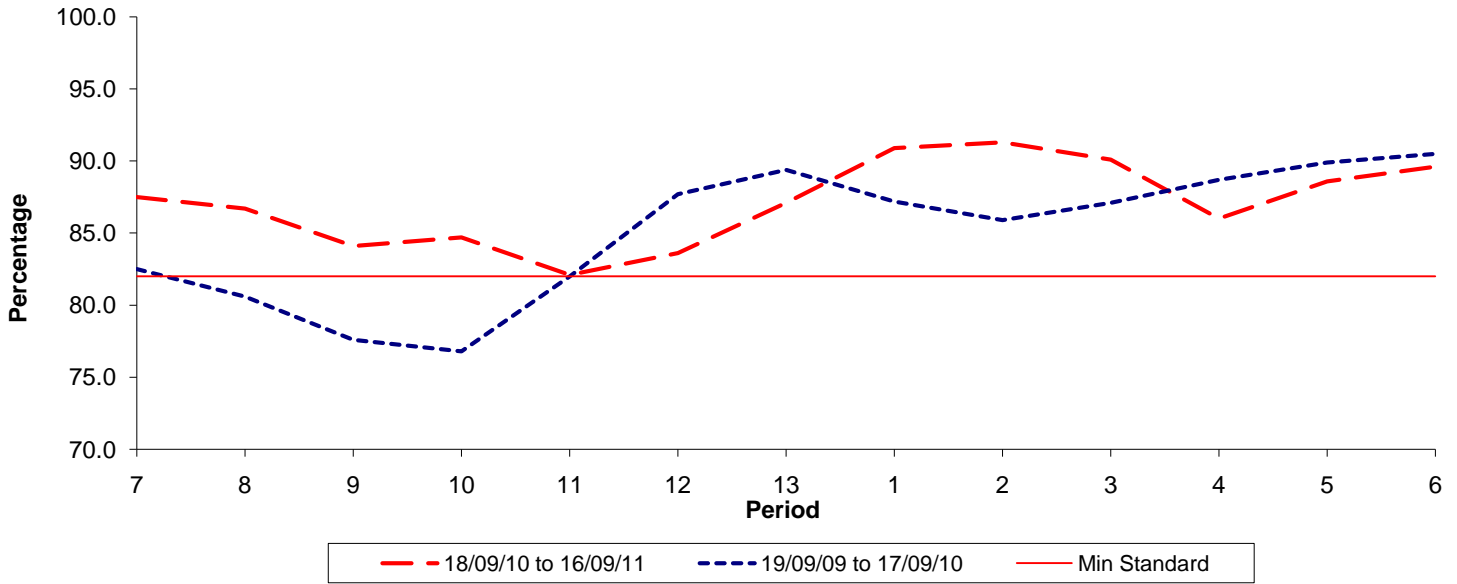




Reliability Performance (Low Frequency)

% Departing On Time

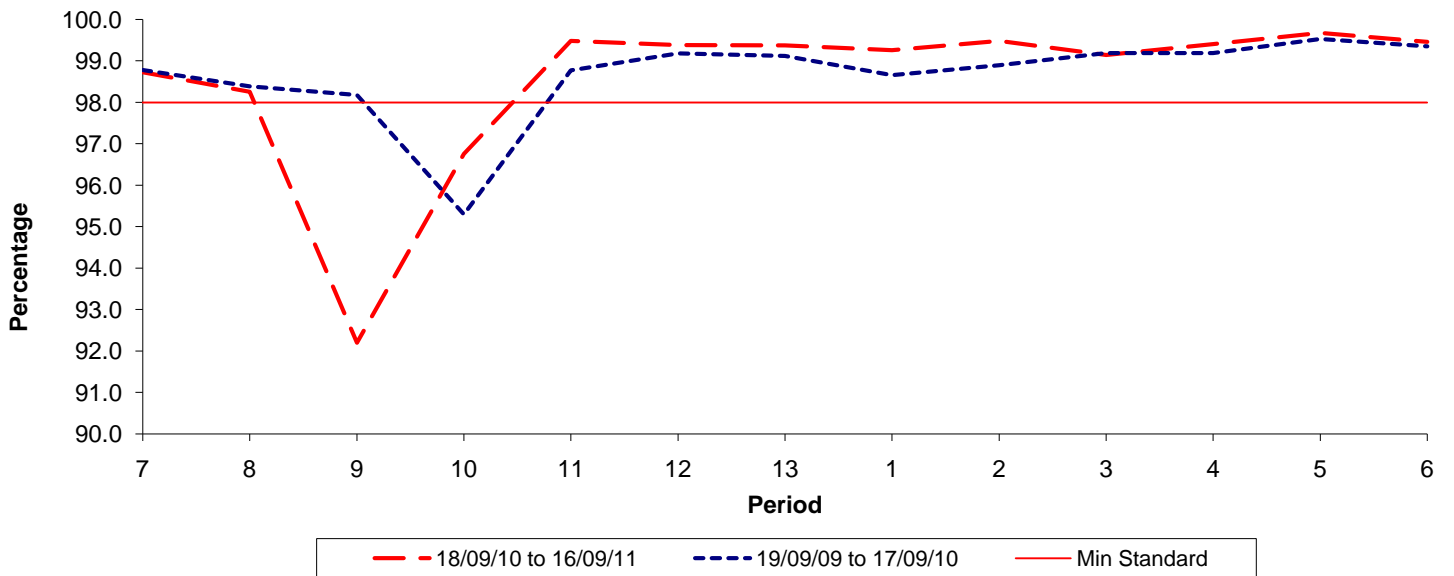


Date Range / Period	7	8	9	10	11	12	13	1	2	3	4	5	6
18/09/10 to 16/09/11	87.50	86.70	84.10	84.70	82.10	83.60	87.10	90.90	91.30	90.10	86.00	88.60	89.60
19/09/09 to 17/09/10	82.50	80.60	77.60	76.80	82.00	87.70	89.40	87.20	85.90	87.10	88.70	89.90	90.50
Min Standard	82.00	82.00	82.00	82.00	82.00	82.00	82.00	82.00	82.00	82.00	82.00	82.00	82.00

On Time figures are based on 12 weeks data

Kilometre Performance

% Kilometres Operated



Date Range / Period	7	8	9	10	11	12	13	1	2	3	4	5	6
18/09/10 to 16/09/11	98.73	98.26	92.20	96.76	99.49	99.39	99.38	99.26	99.49	99.15	99.41	99.68	99.46
19/09/09 to 17/09/10	98.78	98.39	98.18	95.30	98.77	99.18	99.12	98.66	98.90	99.19	99.19	99.53	99.35
Min Standard	98.00	98.00	98.00	98.00	98.00	98.00	98.00	98.00	98.00	98.00	98.00	98.00	98.00

Kilometre figures are based on 4 weeks data