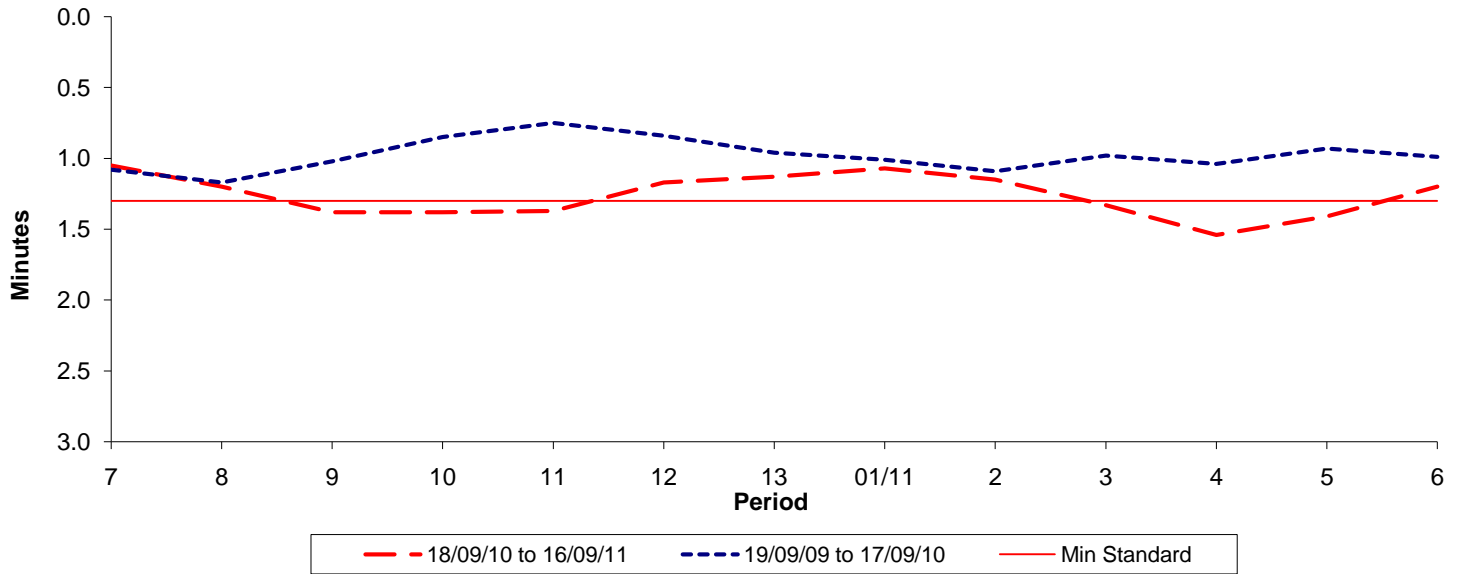




Reliability Performance (High Frequency)

Excess Waiting Time (minutes)

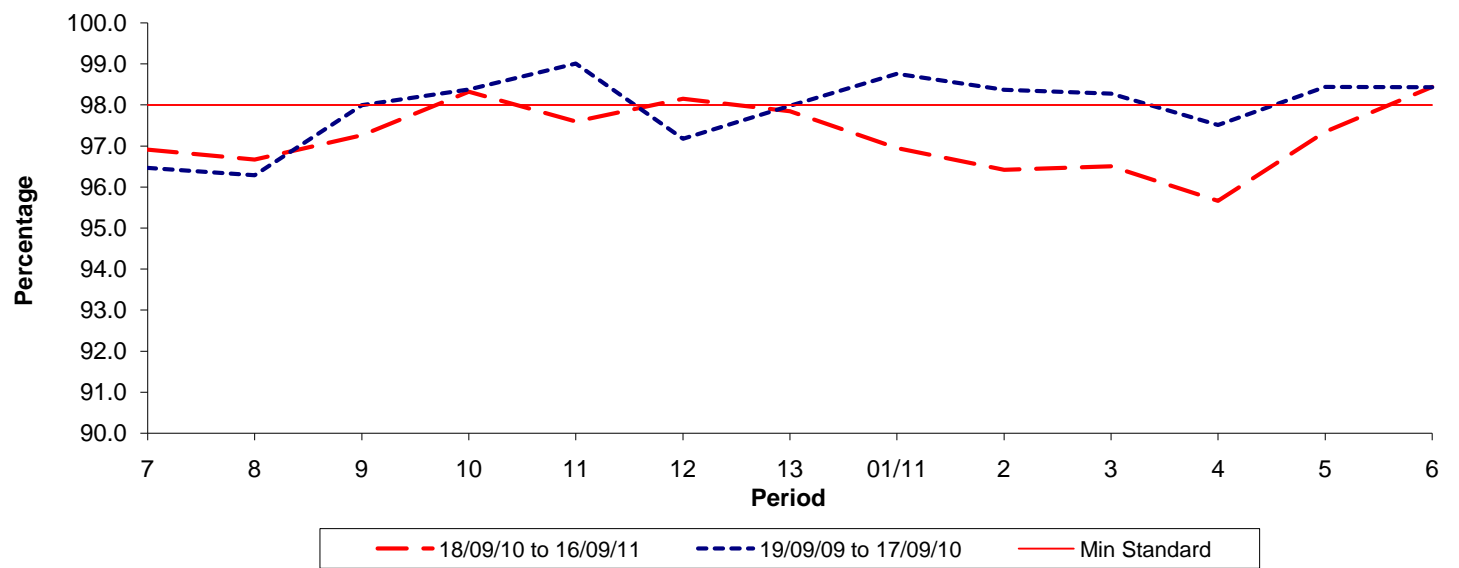


Date Range / Period	7	8	9	10	11	12	13	01/11	2	3	4	5	6
18/09/10 to 16/09/11	1.05	1.20	1.38	1.38	1.37	1.17	1.13	1.07	1.15	1.33	1.54	1.41	1.20
19/09/09 to 17/09/10	1.08	1.17	1.02	0.85	0.75	0.84	0.96	1.01	1.09	0.98	1.04	0.93	0.99
Min Standard	1.30	1.30	1.30	1.30	1.30	1.30	1.30	1.30	1.30	1.30	1.30	1.30	1.30

Excess Waiting Time figures are based on 12 weeks data

Kilometre Performance

% Kilometres Operated



Date Range / Period	7	8	9	10	11	12	13	01/11	2	3	4	5	6
18/09/10 to 16/09/11	96.91	96.67	97.26	98.32	97.60	98.15	97.85	96.95	96.42	96.50	95.66	97.35	98.44
19/09/09 to 17/09/10	96.47	96.29	98.00	98.38	99.01	97.18	97.98	98.76	98.37	98.28	97.51	98.44	98.43
Min Standard	98.00	98.00	98.00	98.00	98.00	98.00	98.00	98.00	98.00	98.00	98.00	98.00	98.00

Kilometre figures are based on 4 weeks data