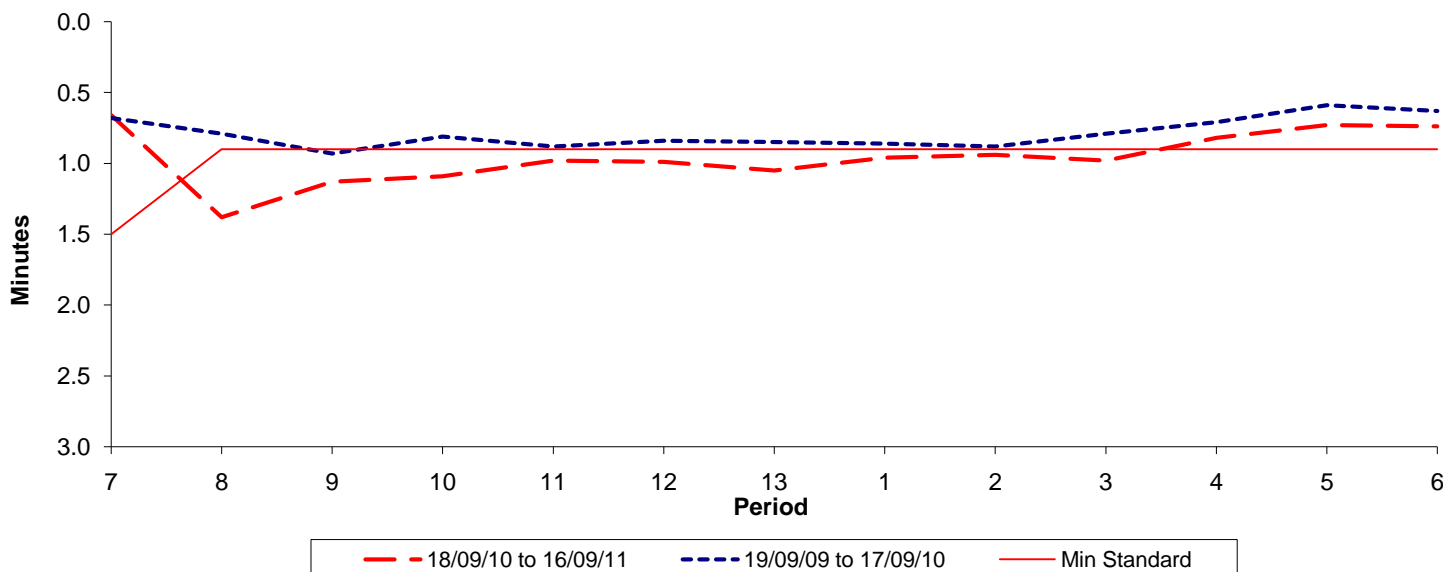




Reliability Performance (High Frequency)

Excess Waiting Time (minutes)

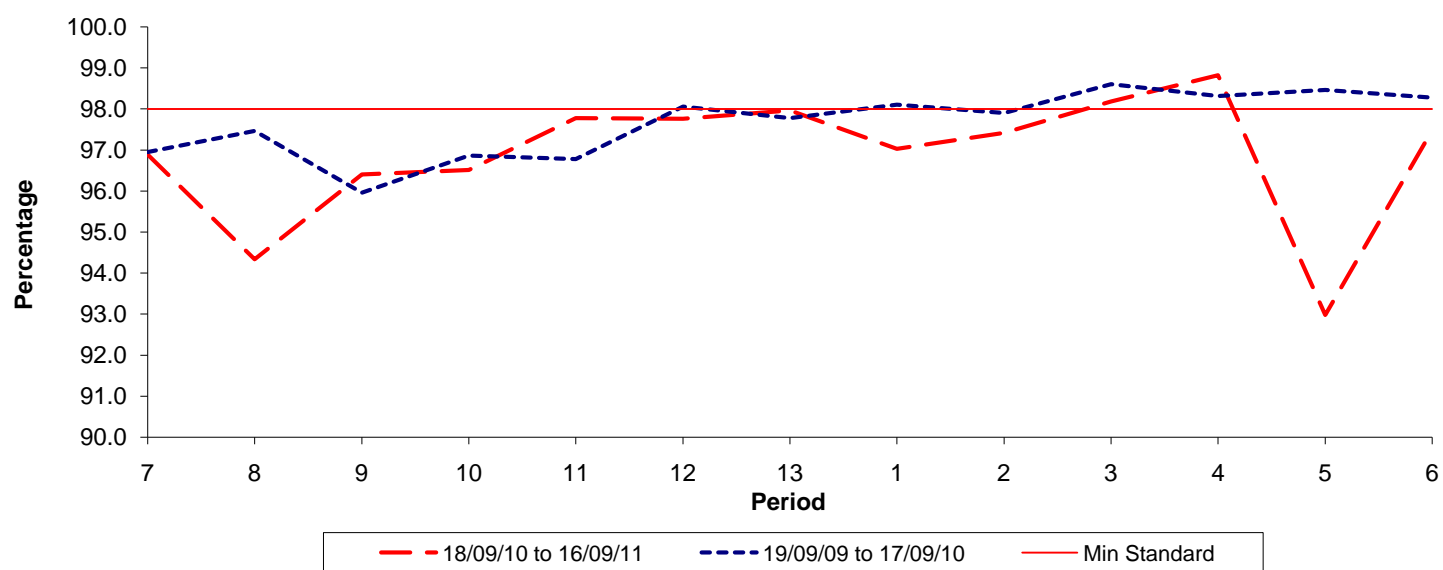


Date Range / Period	7	8	9	10	11	12	13	1	2	3	4	5	6
18/09/10 to 16/09/11	0.66	1.38	1.13	1.09	0.98	0.99	1.05	0.96	0.94	0.98	0.82	0.73	0.74
19/09/09 to 17/09/10	0.68	0.79	0.93	0.81	0.88	0.84	0.85	0.86	0.88	0.79	0.71	0.59	0.63
Min Standard	1.50	0.90	0.90	0.90	0.90	0.90	0.90	0.90	0.90	0.90	0.90	0.90	0.90

Excess Waiting Time figures are based on 12 weeks data

Kilometre Performance

% Kilometres Operated



Date Range / Period	7	8	9	10	11	12	13	1	2	3	4	5	6
18/09/10 to 16/09/11	96.88	94.34	96.40	96.51	97.77	97.76	97.96	97.03	97.42	98.18	98.82	92.98	97.48
19/09/09 to 17/09/10	96.95	97.46	95.96	96.86	96.78	98.06	97.78	98.10	97.90	98.60	98.32	98.46	98.28
Min Standard	98.00	98.00	98.00	98.00	98.00	98.00	98.00	98.00	98.00	98.00	98.00	98.00	98.00

Kilometre figures are based on 4 weeks data