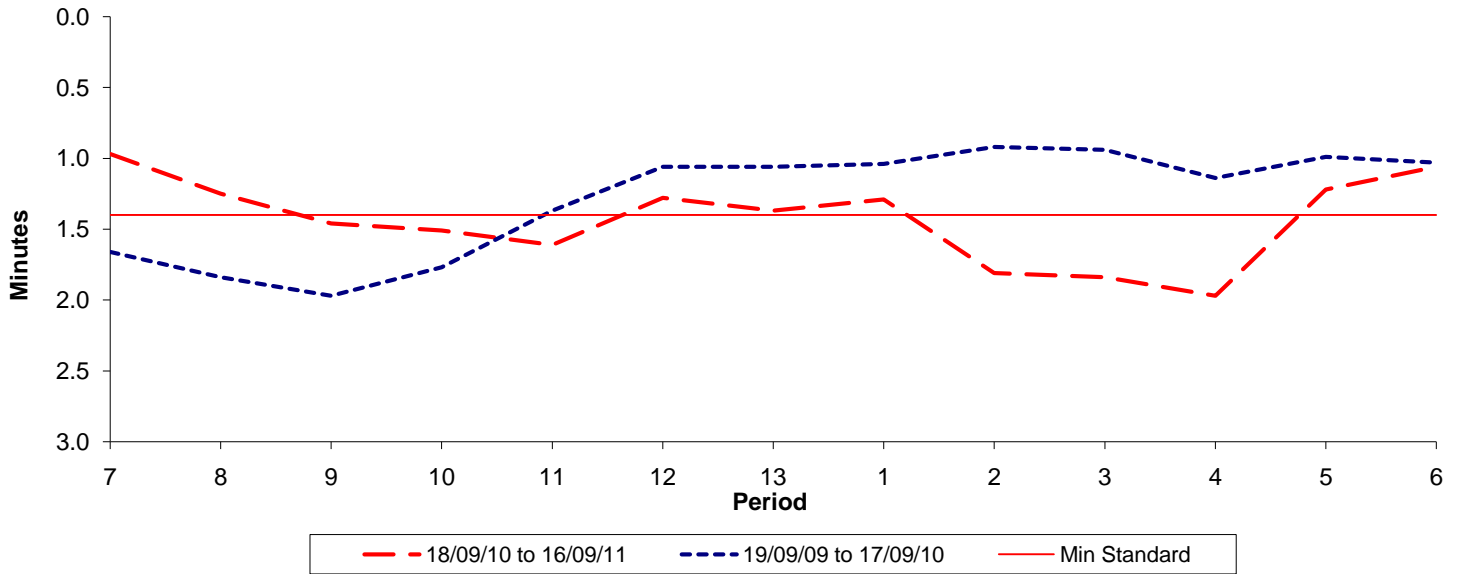




**Reliability Performance ( High Frequency )**

**Excess Waiting Time (minutes)**

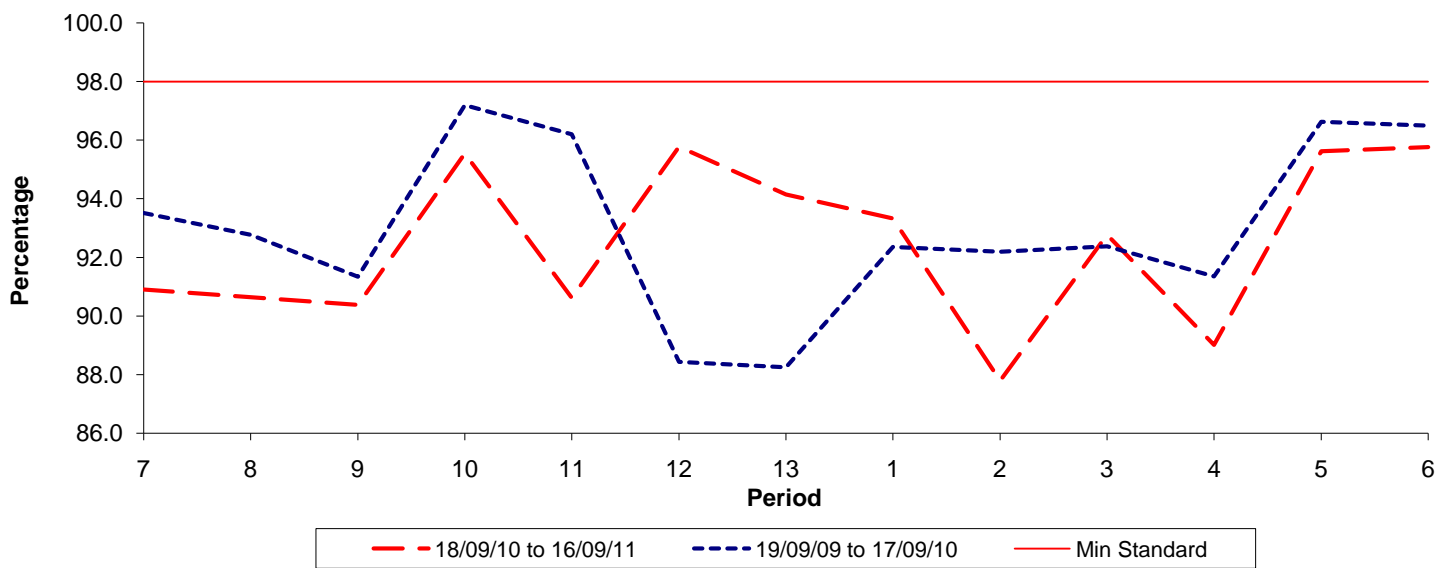


Date Range / Period	7	8	9	10	11	12	13	1	2	3	4	5	6
18/09/10 to 16/09/11	0.97	1.25	1.46	1.51	1.61	1.28	1.37	1.29	1.81	1.84	1.97	1.22	1.06
19/09/09 to 17/09/10	1.66	1.84	1.97	1.77	1.37	1.06	1.06	1.04	0.92	0.94	1.14	0.99	1.03
Min Standard	1.40	1.40	1.40	1.40	1.40	1.40	1.40	1.40	1.40	1.40	1.40	1.40	1.40

Excess Waiting Time figures are based on 12 weeks data

**Kilometre Performance**

**% Kilometres Operated**



Date Range / Period	7	8	9	10	11	12	13	1	2	3	4	5	6
18/09/10 to 16/09/11	90.91	90.65	90.38	95.55	90.62	95.78	94.15	93.33	87.79	92.77	89.01	95.62	95.77
19/09/09 to 17/09/10	93.51	92.77	91.34	97.19	96.19	88.44	88.25	92.35	92.19	92.38	91.35	96.62	96.50
Min Standard	98.00	98.00	98.00	98.00	98.00	98.00	98.00	98.00	98.00	98.00	98.00	98.00	98.00

Kilometre figures are based on 4 weeks data