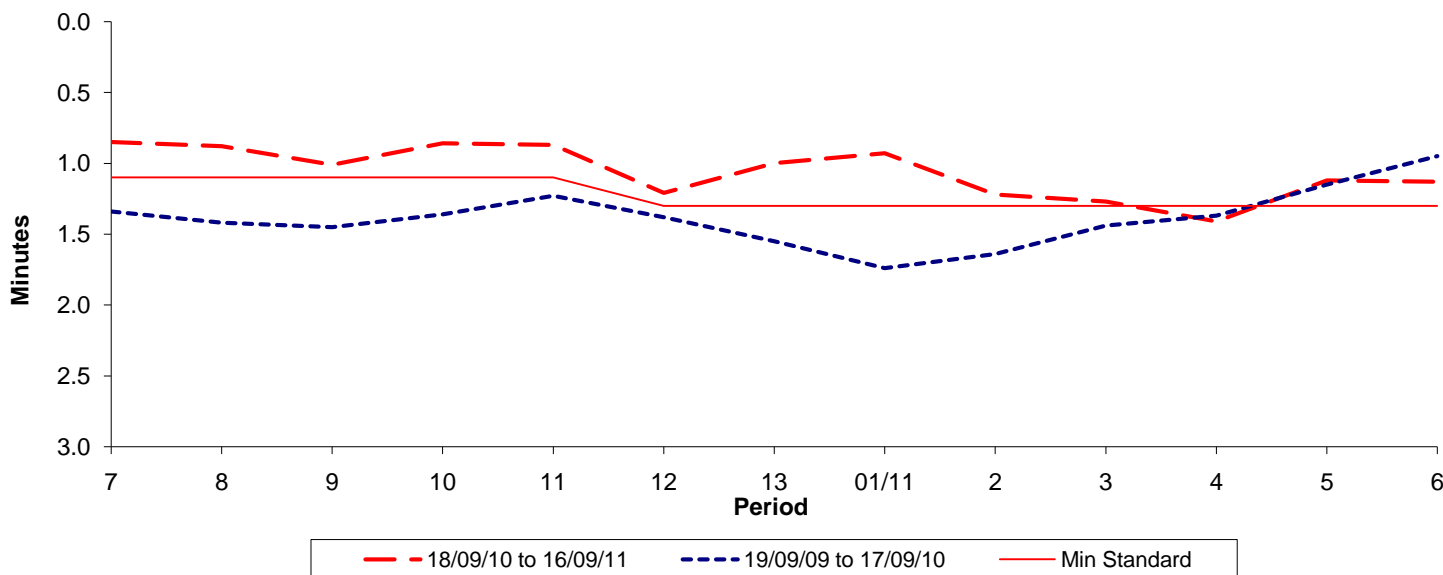




**Reliability Performance ( High Frequency )**

**Excess Waiting Time (minutes)**

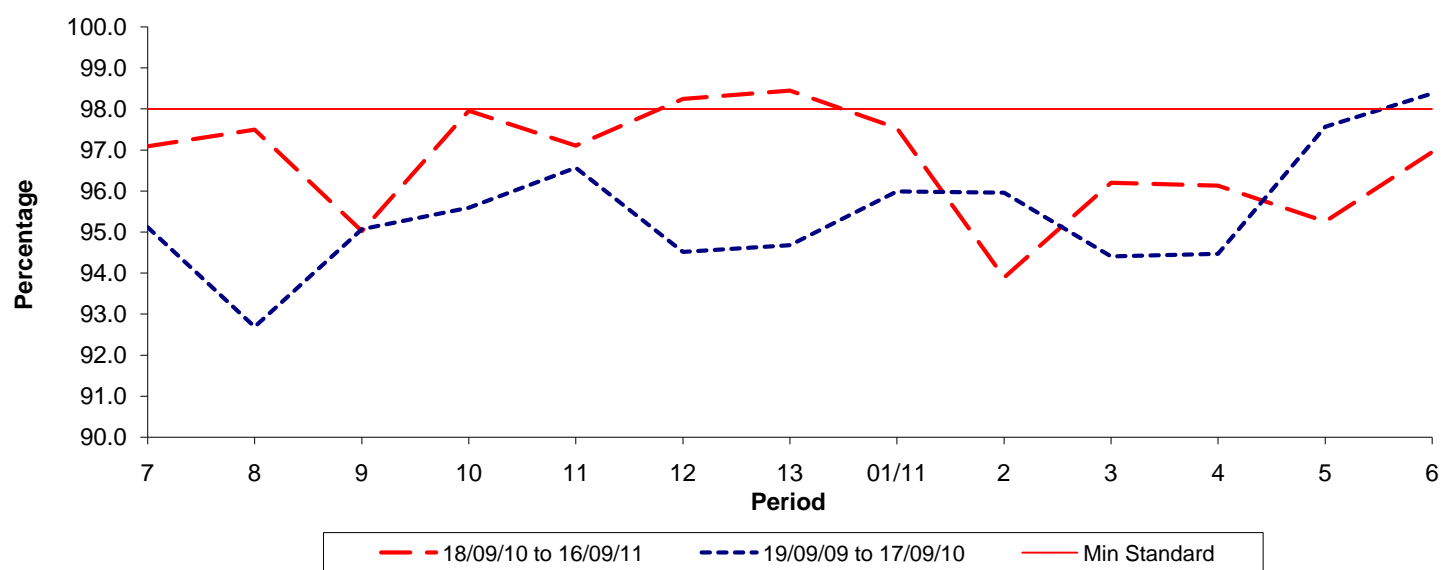


Date Range / Period	7	8	9	10	11	12	13	01/11	2	3	4	5	6
18/09/10 to 16/09/11	0.85	0.88	1.01	0.86	0.87	1.21	1.00	0.93	1.22	1.27	1.41	1.12	1.13
19/09/09 to 17/09/10	1.34	1.42	1.45	1.36	1.23	1.38	1.55	1.74	1.64	1.44	1.37	1.15	0.95
Min Standard	1.10	1.10	1.10	1.10	1.10	1.30	1.30	1.30	1.30	1.30	1.30	1.30	1.30

Excess Waiting Time figures are based on 12 weeks data

**Kilometre Performance**

**% Kilometres Operated**



Date Range / Period	7	8	9	10	11	12	13	01/11	2	3	4	5	6
18/09/10 to 16/09/11	97.09	97.50	95.02	97.96	97.11	98.25	98.45	97.54	93.89	96.20	96.13	95.26	96.95
19/09/09 to 17/09/10	95.12	92.69	95.07	95.59	96.57	94.52	94.68	95.99	95.96	94.41	94.47	97.57	98.38
Min Standard	98.00	98.00	98.00	98.00	98.00	98.00	98.00	98.00	98.00	98.00	98.00	98.00	98.00

Kilometre figures are based on 4 weeks data