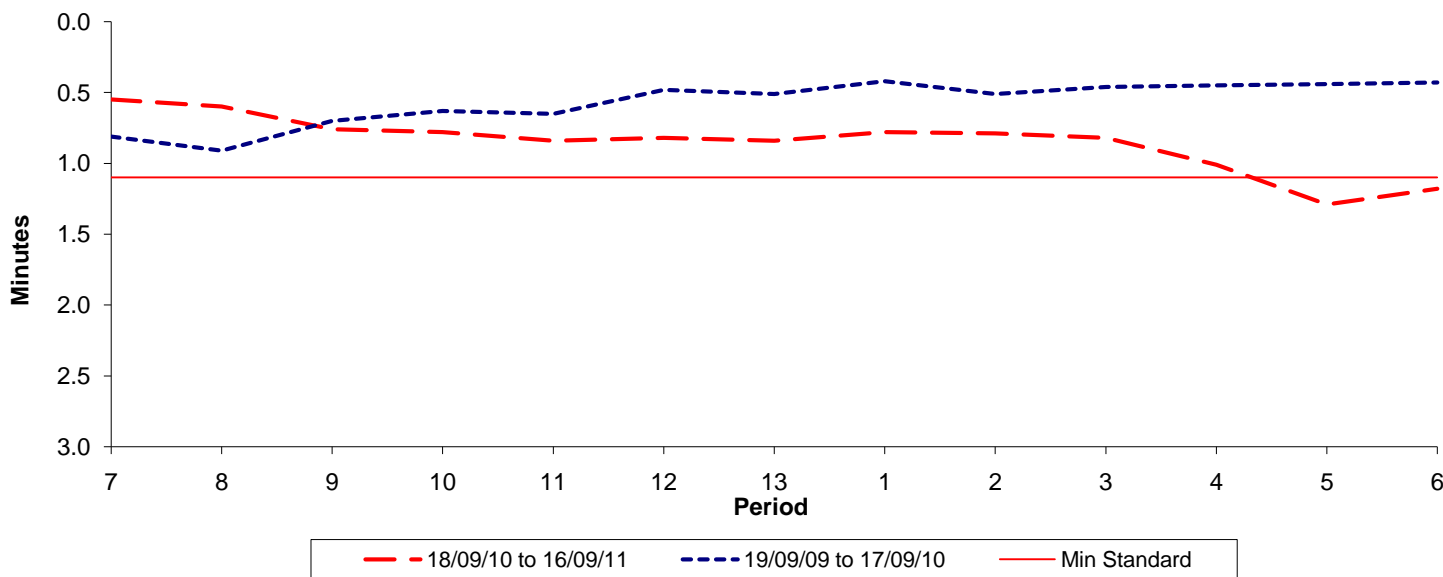




Reliability Performance (High Frequency)

Excess Waiting Time (minutes)

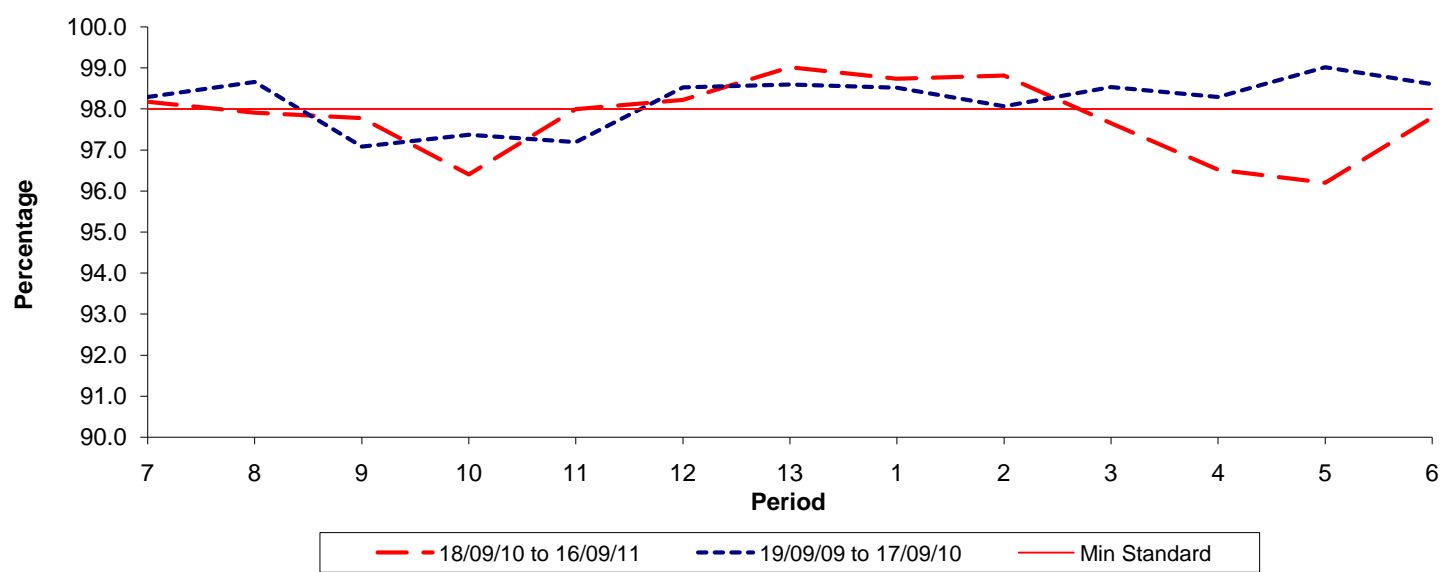


Date Range / Period	7	8	9	10	11	12	13	1	2	3	4	5	6
18/09/10 to 16/09/11	0.55	0.60	0.76	0.78	0.84	0.82	0.84	0.78	0.79	0.82	1.01	1.29	1.18
19/09/09 to 17/09/10	0.81	0.91	0.70	0.63	0.65	0.48	0.51	0.42	0.51	0.46	0.45	0.44	0.43
Min Standard	1.10	1.10	1.10	1.10	1.10	1.10	1.10	1.10	1.10	1.10	1.10	1.10	1.10

Excess Waiting Time figures are based on 12 weeks data

Kilometre Performance

% Kilometres Operated



Date Range / Period	7	8	9	10	11	12	13	1	2	3	4	5	6
18/09/10 to 16/09/11	98.18	97.91	97.78	96.40	98.00	98.22	99.02	98.74	98.82	97.65	96.52	96.20	97.79
19/09/09 to 17/09/10	98.30	98.66	97.08	97.37	97.19	98.53	98.60	98.52	98.07	98.54	98.30	99.02	98.61
Min Standard	98.00	98.00	98.00	98.00	98.00	98.00	98.00	98.00	98.00	98.00	98.00	98.00	98.00

Kilometre figures are based on 4 weeks data