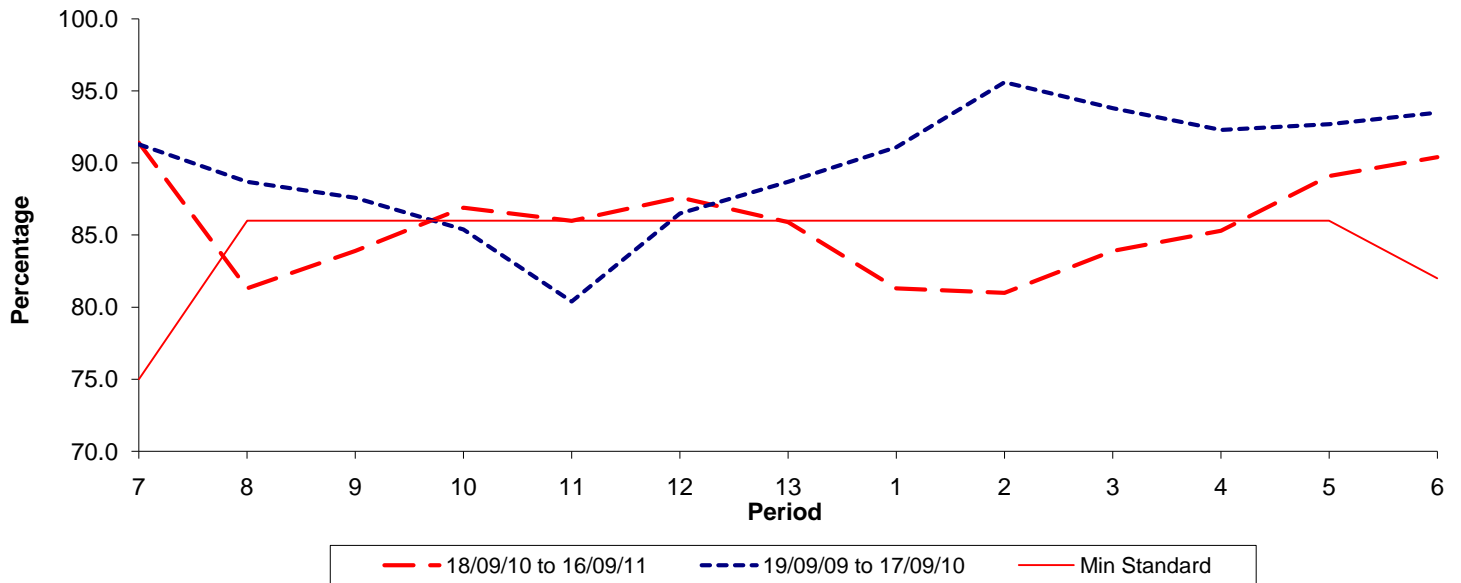




**Reliability Performance ( Low Frequency )**

**% Departing On Time**

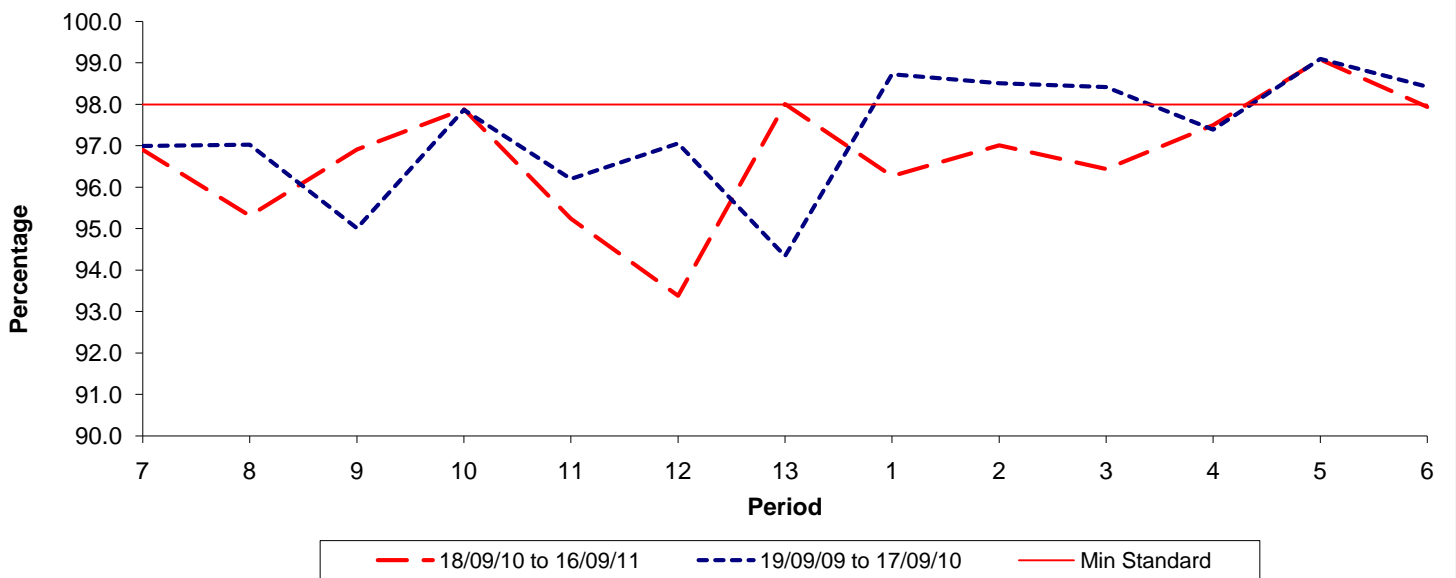


Date Range / Period	7	8	9	10	11	12	13	1	2	3	4	5	6
18/09/10 to 16/09/11	91.40	81.30	83.90	86.90	86.00	87.60	85.90	81.30	81.00	83.90	85.30	89.10	90.40
19/09/09 to 17/09/10	91.30	88.70	87.60	85.40	80.40	86.50	88.70	91.10	95.60	93.80	92.30	92.70	93.50
Min Standard	75.00	86.00	86.00	86.00	86.00	86.00	86.00	86.00	86.00	86.00	86.00	86.00	82.00

On Time figures are based on 12 weeks data

**Kilometre Performance**

**% Kilometres Operated**



Date Range / Period	7	8	9	10	11	12	13	1	2	3	4	5	6
18/09/10 to 16/09/11	96.90	95.31	96.91	97.88	95.24	93.38	98.01	96.27	97.01	96.44	97.50	99.08	97.94
19/09/09 to 17/09/10	97.00	97.03	95.01	97.87	96.20	97.06	94.34	98.73	98.51	98.42	97.39	99.10	98.43
Min Standard	98.00	98.00	98.00	98.00	98.00	98.00	98.00	98.00	98.00	98.00	98.00	98.00	98.00

Kilometre figures are based on 4 weeks data