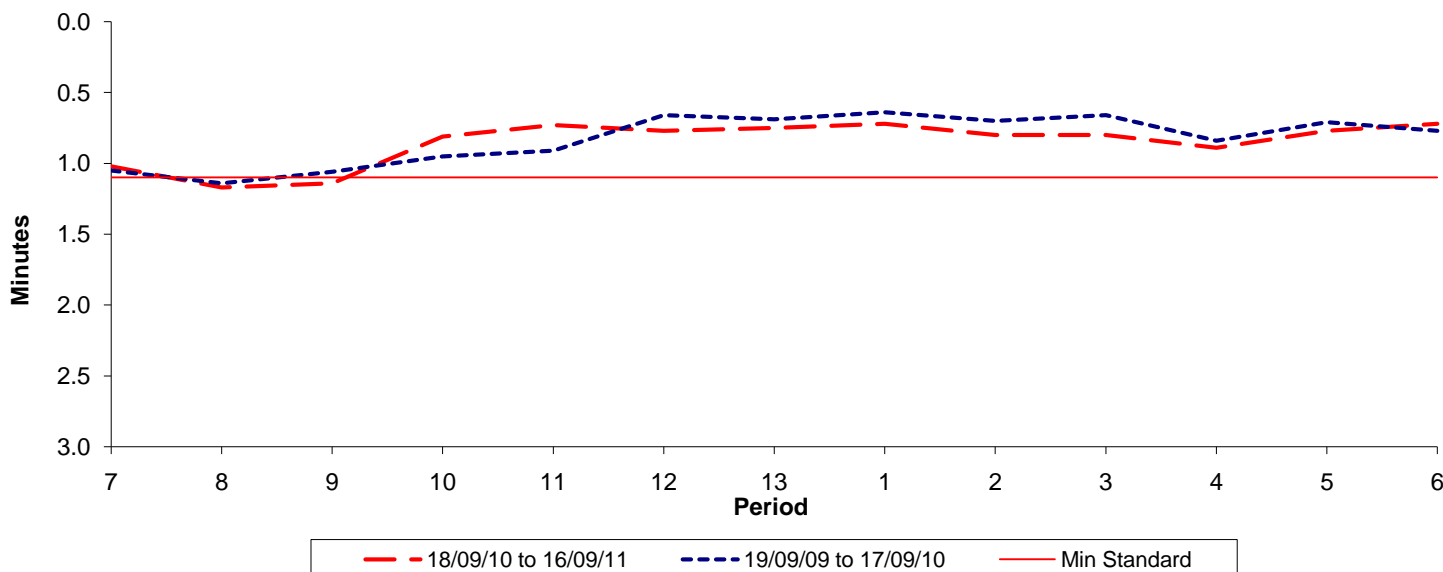




Reliability Performance (High Frequency)

Excess Waiting Time (minutes)

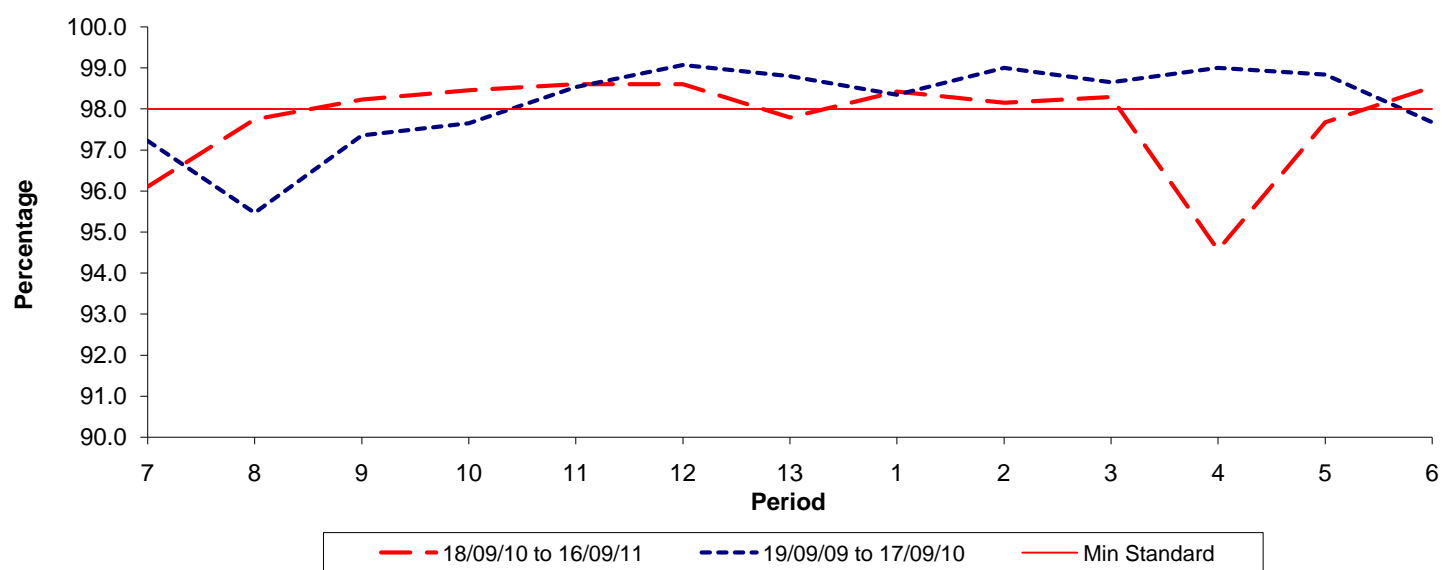


Date Range / Period	7	8	9	10	11	12	13	1	2	3	4	5	6
18/09/10 to 16/09/11	1.02	1.17	1.14	0.81	0.73	0.77	0.75	0.72	0.80	0.80	0.89	0.77	0.72
19/09/09 to 17/09/10	1.05	1.14	1.06	0.95	0.91	0.66	0.69	0.64	0.70	0.66	0.84	0.71	0.77
Min Standard	1.10	1.10	1.10	1.10	1.10	1.10	1.10	1.10	1.10	1.10	1.10	1.10	1.10

Excess Waiting Time figures are based on 12 weeks data

Kilometre Performance

% Kilometres Operated



Date Range / Period	7	8	9	10	11	12	13	1	2	3	4	5	6
18/09/10 to 16/09/11	96.11	97.74	98.23	98.45	98.60	98.60	97.79	98.42	98.15	98.29	94.56	97.67	98.53
19/09/09 to 17/09/10	97.23	95.47	97.35	97.65	98.53	99.07	98.80	98.34	99.00	98.65	99.00	98.83	97.67
Min Standard	98.00	98.00	98.00	98.00	98.00	98.00	98.00	98.00	98.00	98.00	98.00	98.00	98.00

Kilometre figures are based on 4 weeks data