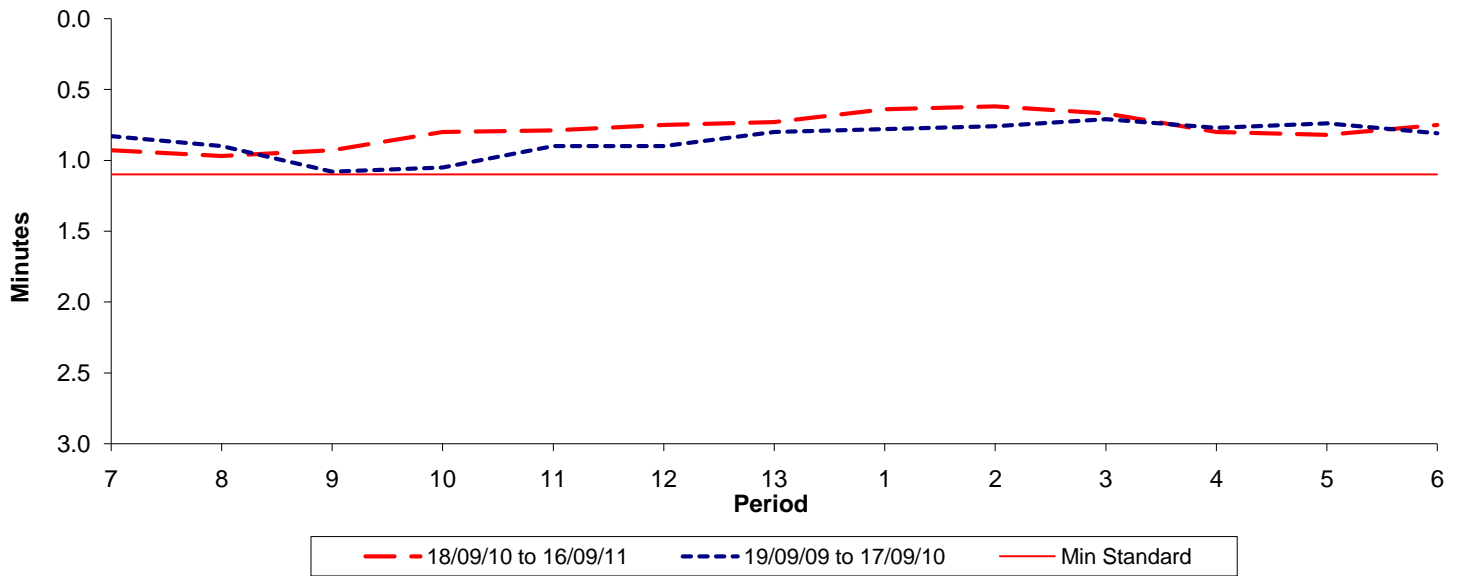




Reliability Performance (High Frequency)

Excess Waiting Time (minutes)

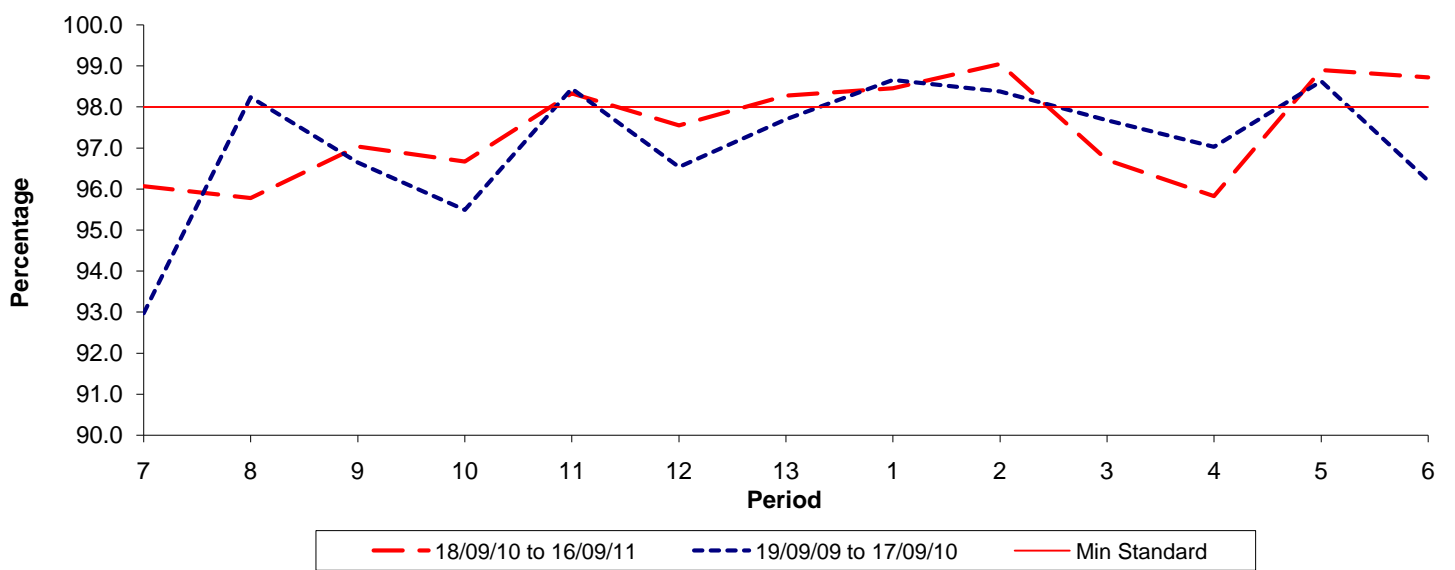


Date Range / Period	7	8	9	10	11	12	13	1	2	3	4	5	6
18/09/10 to 16/09/11	0.93	0.97	0.93	0.80	0.79	0.75	0.73	0.64	0.62	0.67	0.80	0.82	0.75
19/09/09 to 17/09/10	0.83	0.90	1.08	1.05	0.90	0.90	0.80	0.78	0.76	0.71	0.77	0.74	0.81
Min Standard	1.10	1.10	1.10	1.10	1.10	1.10	1.10	1.10	1.10	1.10	1.10	1.10	1.10

Excess Waiting Time figures are based on 12 weeks data

Kilometre Performance

% Kilometres Operated



Date Range / Period	7	8	9	10	11	12	13	1	2	3	4	5	6
18/09/10 to 16/09/11	96.07	95.78	97.04	96.67	98.33	97.55	98.28	98.46	99.05	96.71	95.83	98.90	98.72
19/09/09 to 17/09/10	92.97	98.24	96.65	95.49	98.45	96.54	97.70	98.66	98.38	97.68	97.03	98.63	96.20
Min Standard	98.00	98.00	98.00	98.00	98.00	98.00	98.00	98.00	98.00	98.00	98.00	98.00	98.00

Kilometre figures are based on 4 weeks data