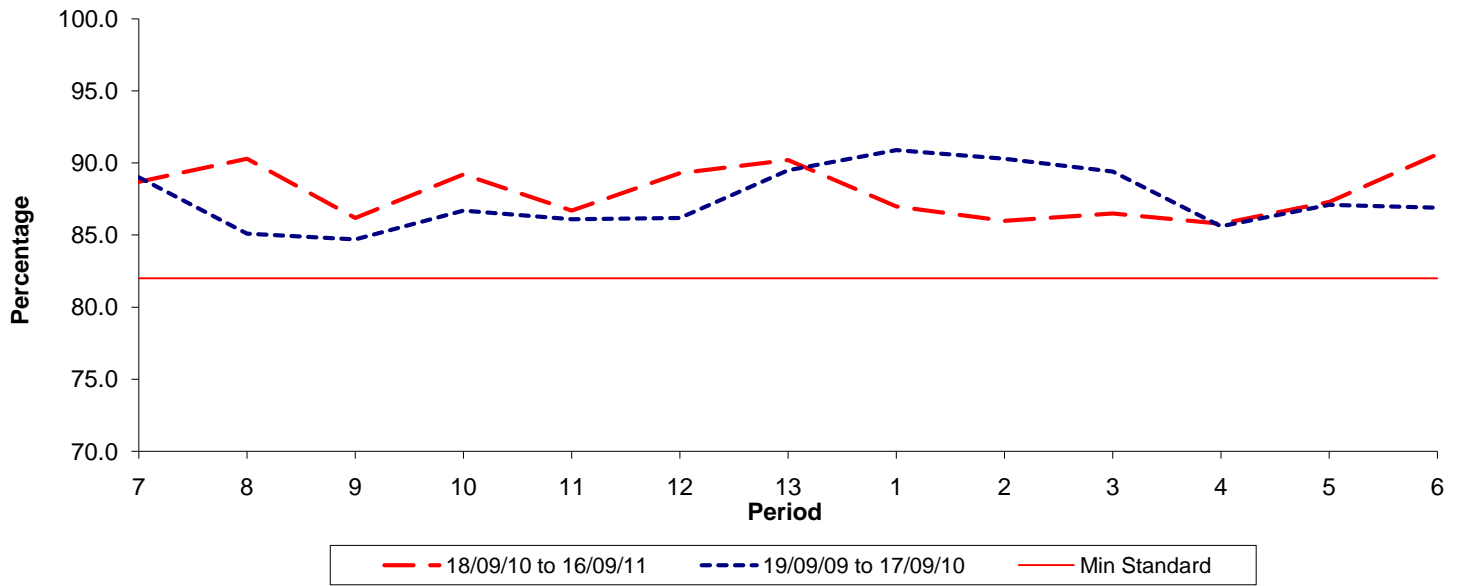




**Reliability Performance ( Low Frequency )**

**% Departing On Time**

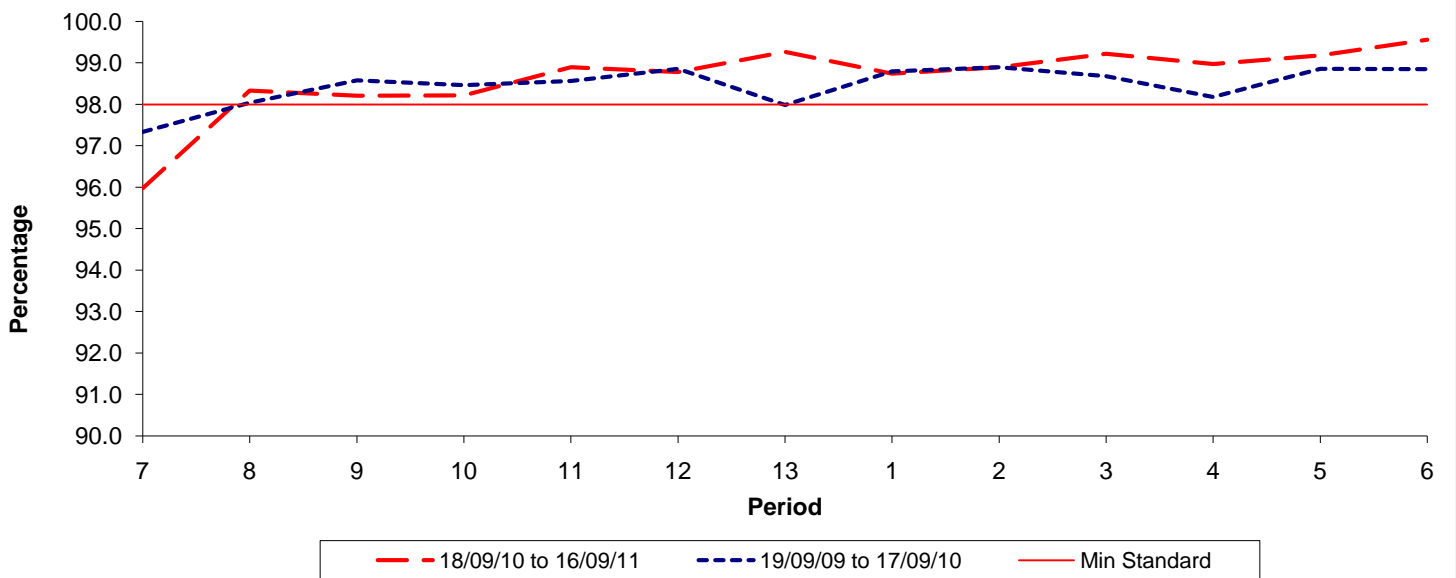


Date Range / Period	7	8	9	10	11	12	13	1	2	3	4	5	6
18/09/10 to 16/09/11	88.70	90.30	86.20	89.20	86.70	89.30	90.20	87.00	86.00	86.50	85.80	87.30	90.60
19/09/09 to 17/09/10	89.00	85.10	84.70	86.70	86.10	86.20	89.50	90.90	90.30	89.40	85.60	87.10	86.90
Min Standard	82.00	82.00	82.00	82.00	82.00	82.00	82.00	82.00	82.00	82.00	82.00	82.00	82.00

On Time figures are based on 12 weeks data

**Kilometre Performance**

**% Kilometres Operated**



Date Range / Period	7	8	9	10	11	12	13	1	2	3	4	5	6
18/09/10 to 16/09/11	95.98	98.33	98.21	98.22	98.90	98.78	99.27	98.74	98.90	99.22	98.97	99.18	99.56
19/09/09 to 17/09/10	97.34	98.04	98.58	98.47	98.57	98.86	97.99	98.80	98.90	98.68	98.18	98.86	98.85
Min Standard	98.00	98.00	98.00	98.00	98.00	98.00	98.00	98.00	98.00	98.00	98.00	98.00	98.00

Kilometre figures are based on 4 weeks data