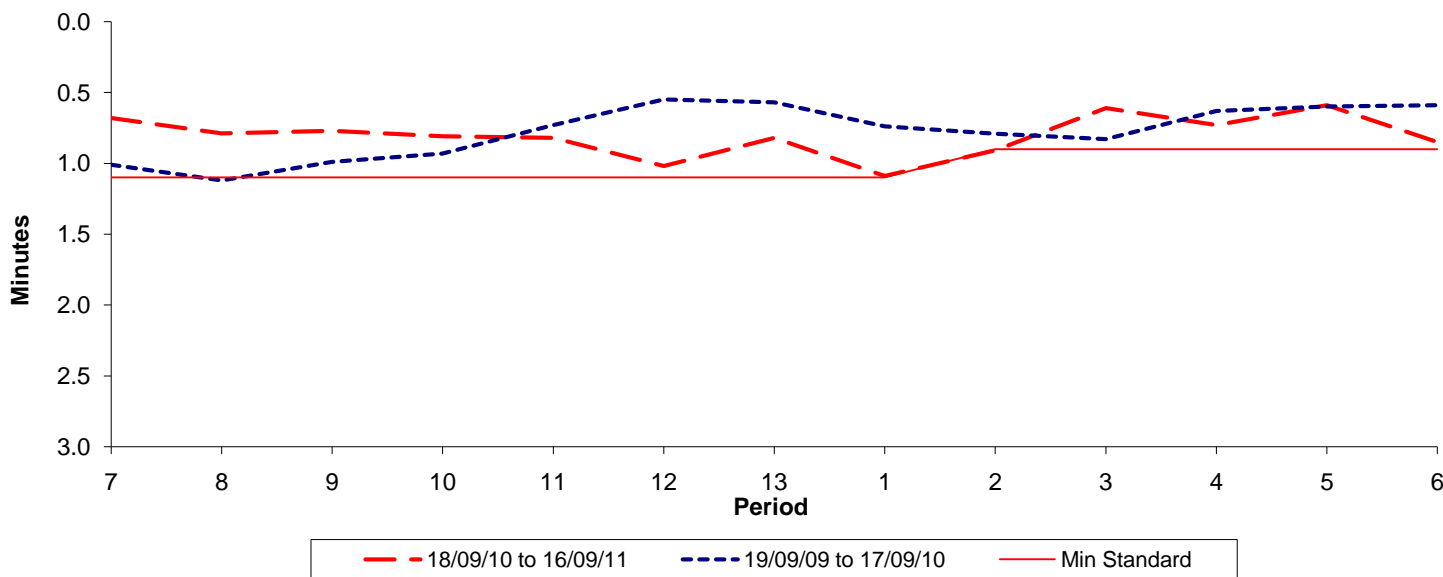




Reliability Performance (High Frequency)

Excess Waiting Time (minutes)

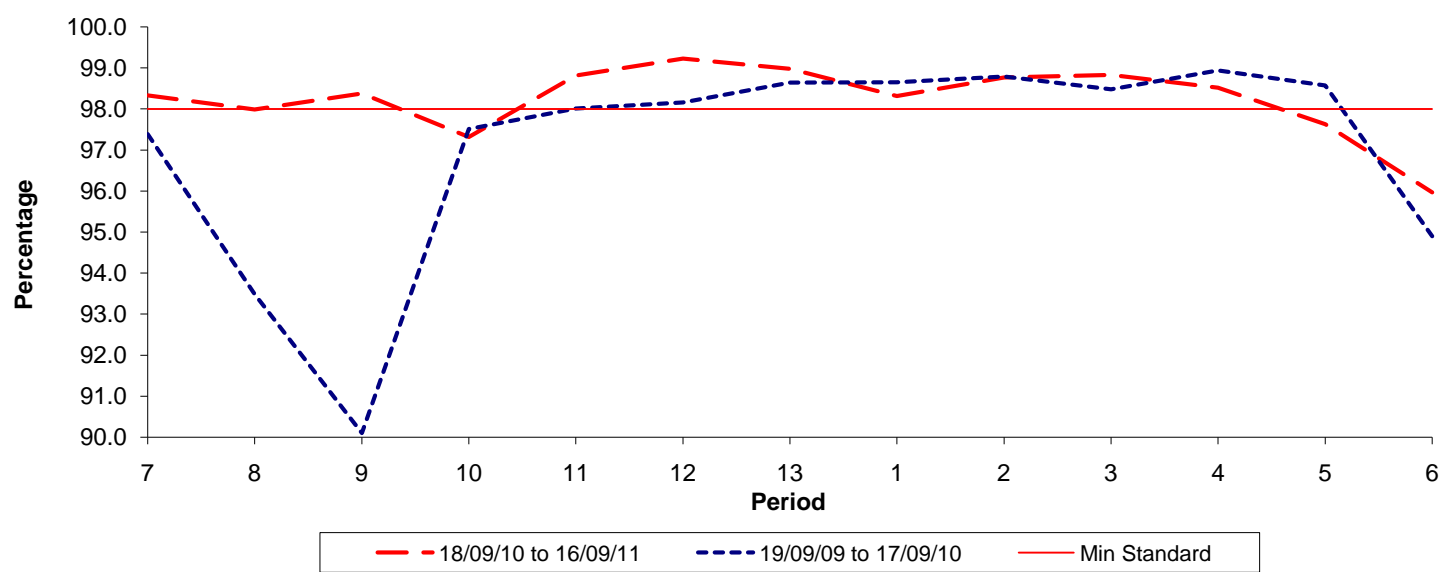


Date Range / Period	7	8	9	10	11	12	13	1	2	3	4	5	6
18/09/10 to 16/09/11	0.68	0.79	0.77	0.81	0.82	1.02	0.82	1.09	0.91	0.61	0.73	0.59	0.85
19/09/09 to 17/09/10	1.01	1.12	0.99	0.93	0.73	0.55	0.57	0.74	0.79	0.83	0.63	0.60	0.59
Min Standard	1.10	1.10	1.10	1.10	1.10	1.10	1.10	1.10	0.90	0.90	0.90	0.90	0.90

Excess Waiting Time figures are based on 12 weeks data

Kilometre Performance

% Kilometres Operated



Date Range / Period	7	8	9	10	11	12	13	1	2	3	4	5	6
18/09/10 to 16/09/11	98.33	97.99	98.38	97.32	98.82	99.23	98.98	98.32	98.77	98.83	98.52	97.63	95.97
19/09/09 to 17/09/10	97.39	93.49	90.10	97.51	98.01	98.16	98.64	98.65	98.79	98.48	98.94	98.57	94.90
Min Standard	98.00	98.00	98.00	98.00	98.00	98.00	98.00	98.00	98.00	98.00	98.00	98.00	98.00

Kilometre figures are based on 4 weeks data