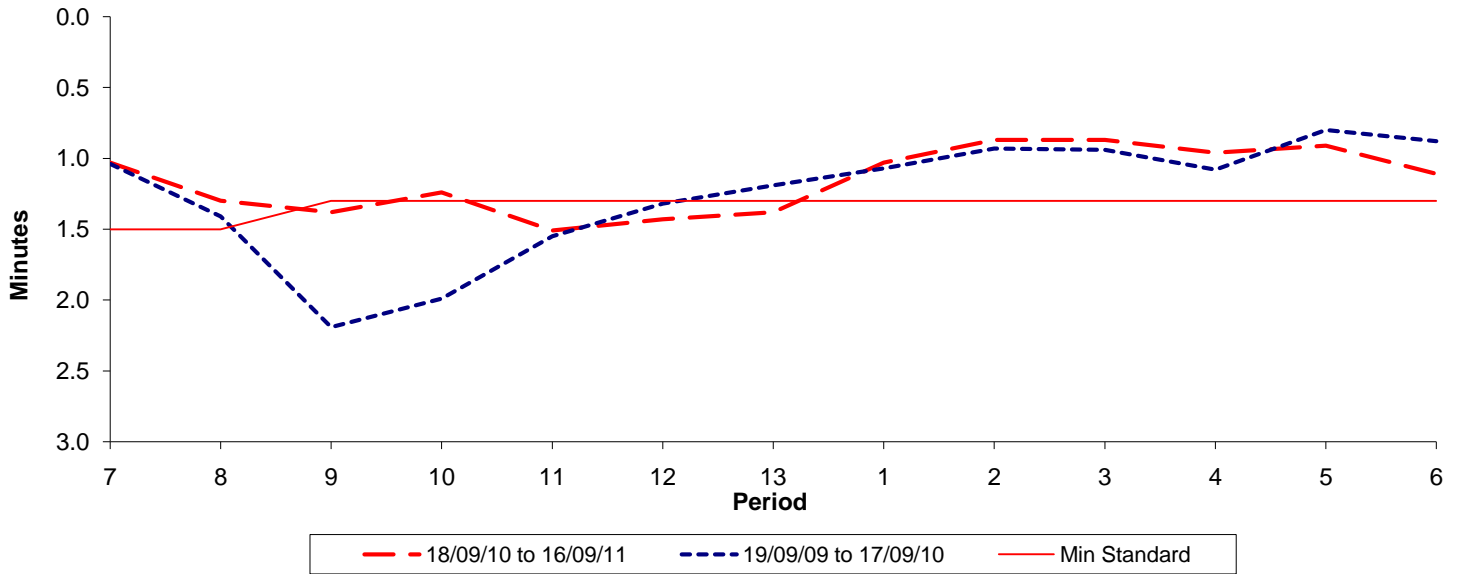




**Reliability Performance ( High Frequency )**

Excess Waiting Time (minutes)

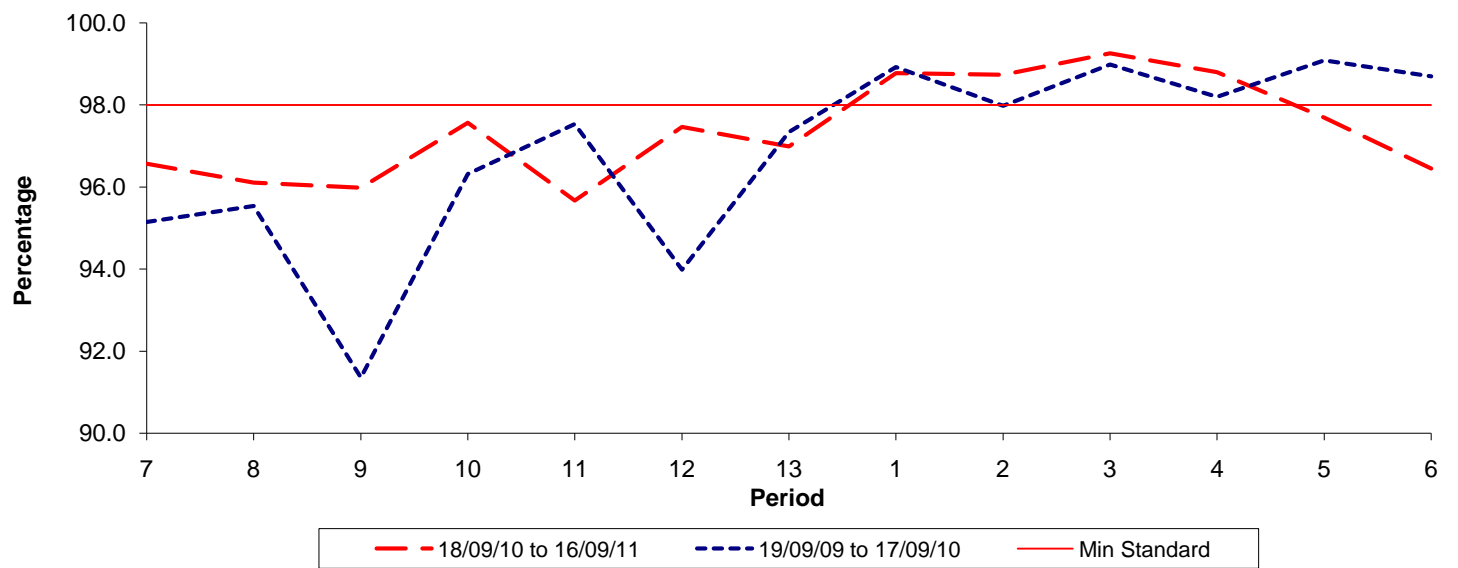


Date Range / Period	7	8	9	10	11	12	13	1	2	3	4	5	6
18/09/10 to 16/09/11	1.03	1.30	1.38	1.24	1.51	1.43	1.38	1.03	0.87	0.87	0.96	0.91	1.11
19/09/09 to 17/09/10	1.04	1.41	2.19	1.99	1.55	1.32	1.19	1.07	0.93	0.94	1.08	0.80	0.88
Min Standard	1.50	1.50	1.30	1.30	1.30	1.30	1.30	1.30	1.30	1.30	1.30	1.30	1.30

Excess Waiting Time figures are based on 12 weeks data

**Kilometre Performance**

% Kilometres Operated



Date Range / Period	7	8	9	10	11	12	13	1	2	3	4	5	6
18/09/10 to 16/09/11	96.57	96.11	95.98	97.57	95.67	97.46	96.99	98.78	98.74	99.26	98.80	97.69	96.45
19/09/09 to 17/09/10	95.15	95.54	91.35	96.32	97.53	93.98	97.34	98.93	97.98	98.99	98.20	99.09	98.70
Min Standard	98.00	98.00	98.00	98.00	98.00	98.00	98.00	98.00	98.00	98.00	98.00	98.00	98.00

Kilometre figures are based on 4 weeks data