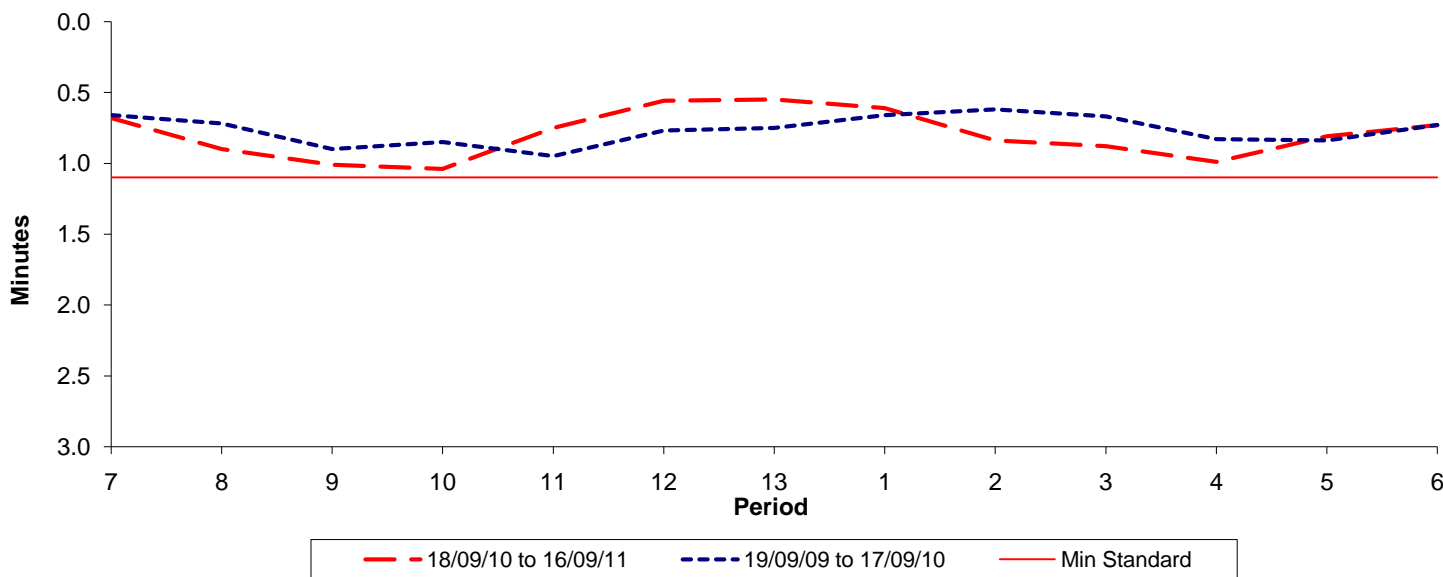




Reliability Performance (High Frequency)

Excess Waiting Time (minutes)

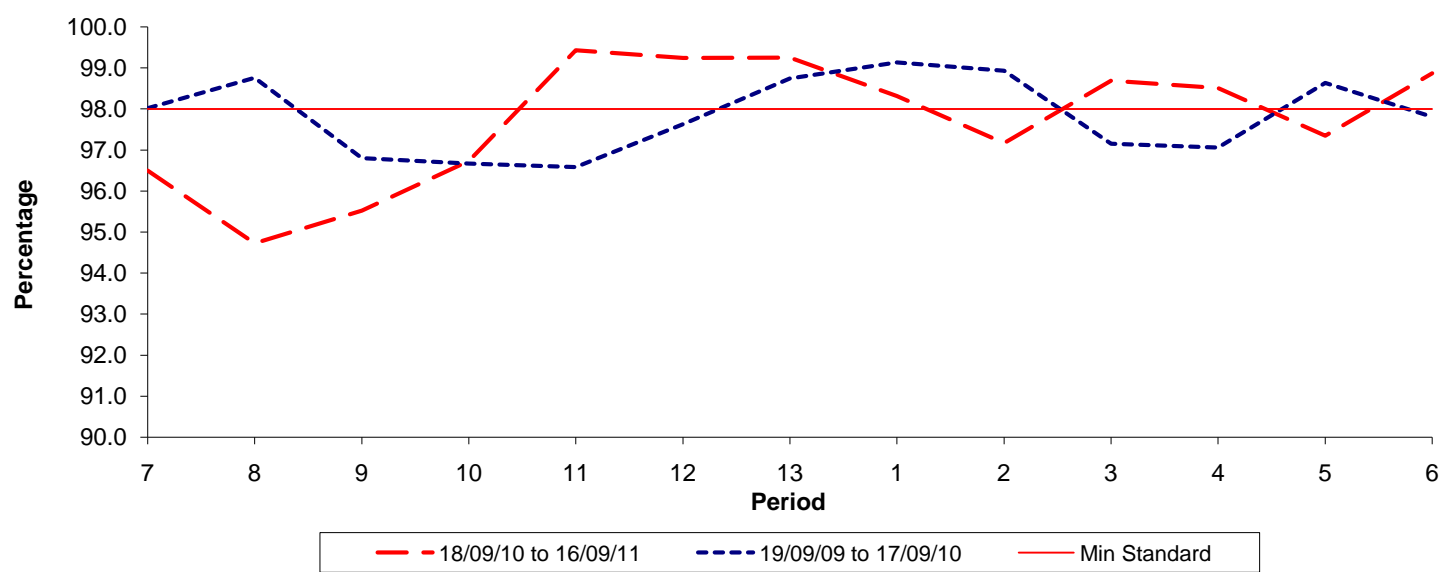


| Date Range / Period | 7 | 8 | 9 | 10 | 11 | 12 | 13 | 1 | 2 | 3 | 4 | 5 | 6 |
|----------------------|------|------|------|------|------|------|------|------|------|------|------|------|------|
| 18/09/10 to 16/09/11 | 0.68 | 0.90 | 1.01 | 1.04 | 0.75 | 0.56 | 0.55 | 0.61 | 0.84 | 0.88 | 0.99 | 0.81 | 0.73 |
| 19/09/09 to 17/09/10 | 0.66 | 0.72 | 0.90 | 0.85 | 0.95 | 0.77 | 0.75 | 0.66 | 0.62 | 0.67 | 0.83 | 0.84 | 0.73 |
| Min Standard | 1.10 | 1.10 | 1.10 | 1.10 | 1.10 | 1.10 | 1.10 | 1.10 | 1.10 | 1.10 | 1.10 | 1.10 | 1.10 |

Excess Waiting Time figures are based on 12 weeks data

Kilometre Performance

% Kilometres Operated



| Date Range / Period | 7 | 8 | 9 | 10 | 11 | 12 | 13 | 1 | 2 | 3 | 4 | 5 | 6 |
|----------------------|-------|-------|-------|-------|-------|-------|-------|-------|-------|-------|-------|-------|-------|
| 18/09/10 to 16/09/11 | 96.50 | 94.73 | 95.52 | 96.73 | 99.43 | 99.25 | 99.25 | 98.32 | 97.17 | 98.69 | 98.51 | 97.35 | 98.87 |
| 19/09/09 to 17/09/10 | 98.02 | 98.76 | 96.80 | 96.67 | 96.58 | 97.63 | 98.75 | 99.13 | 98.94 | 97.16 | 97.06 | 98.64 | 97.81 |
| Min Standard | 98.00 | 98.00 | 98.00 | 98.00 | 98.00 | 98.00 | 98.00 | 98.00 | 98.00 | 98.00 | 98.00 | 98.00 | 98.00 |

Kilometre figures are based on 4 weeks data