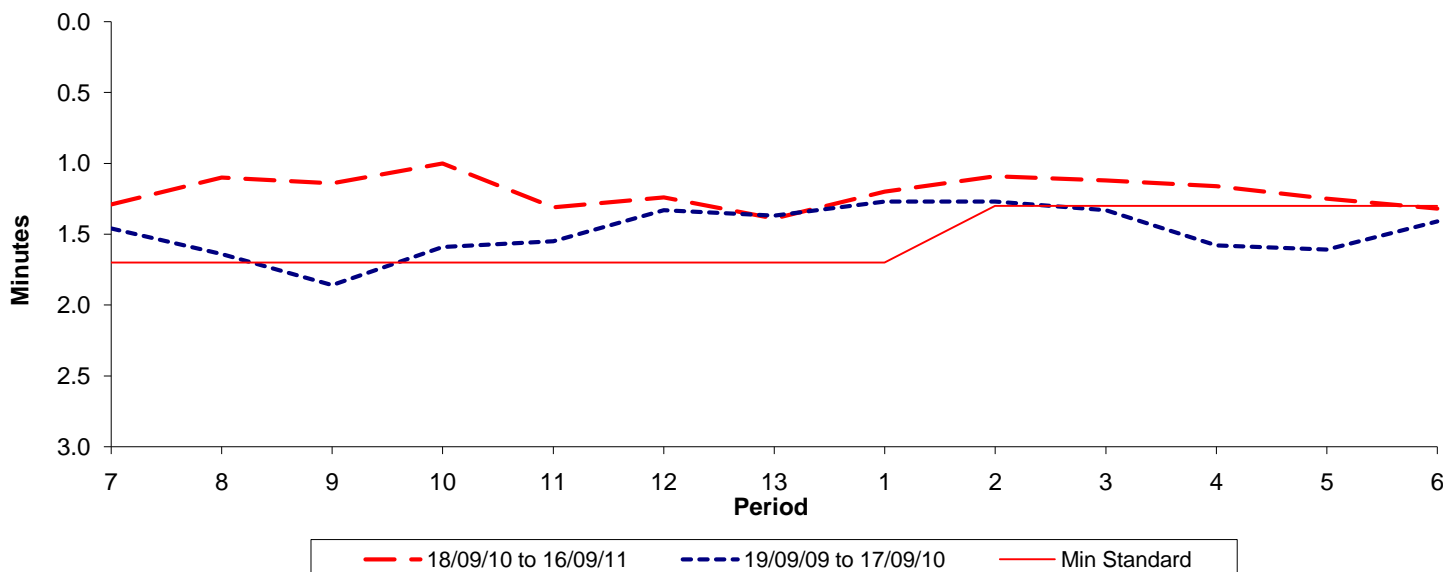




Reliability Performance (High Frequency)

Excess Waiting Time (minutes)

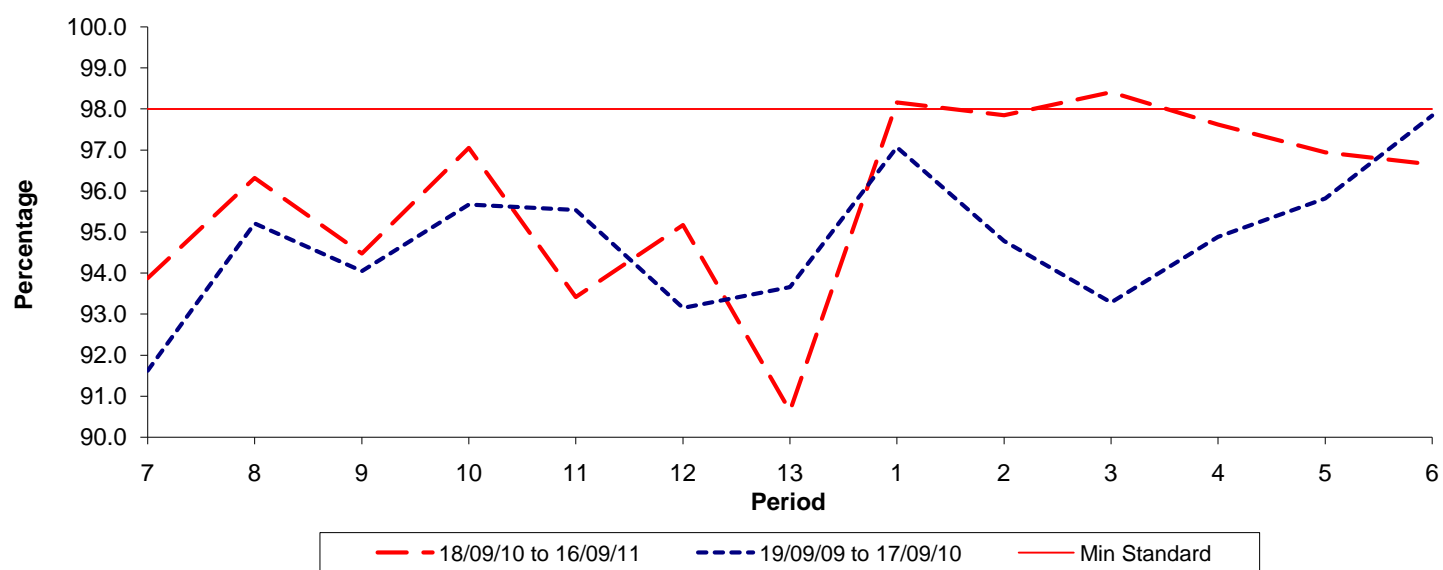


Date Range / Period	7	8	9	10	11	12	13	1	2	3	4	5	6
18/09/10 to 16/09/11	1.29	1.10	1.14	1.00	1.31	1.24	1.39	1.20	1.09	1.12	1.16	1.25	1.32
19/09/09 to 17/09/10	1.46	1.64	1.86	1.59	1.55	1.33	1.37	1.27	1.27	1.33	1.58	1.61	1.41
Min Standard	1.70	1.70	1.70	1.70	1.70	1.70	1.70	1.70	1.30	1.30	1.30	1.30	1.30

Excess Waiting Time figures are based on 12 weeks data

Kilometre Performance

% Kilometres Operated



Date Range / Period	7	8	9	10	11	12	13	1	2	3	4	5	6
18/09/10 to 16/09/11	93.88	96.32	94.48	97.05	93.42	95.17	90.64	98.16	97.85	98.41	97.62	96.94	96.65
19/09/09 to 17/09/10	91.62	95.21	94.05	95.67	95.54	93.15	93.66	97.07	94.78	93.28	94.88	95.82	97.84
Min Standard	98.00	98.00	98.00	98.00	98.00	98.00	98.00	98.00	98.00	98.00	98.00	98.00	98.00

Kilometre figures are based on 4 weeks data