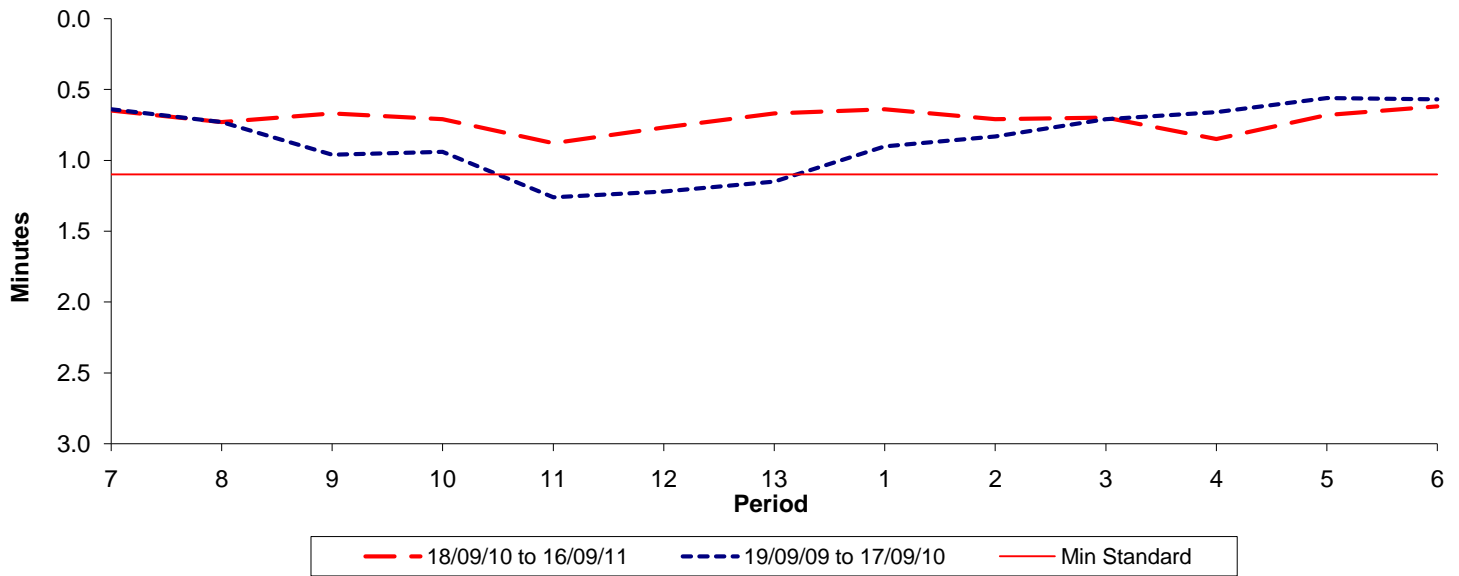




Reliability Performance (High Frequency)

Excess Waiting Time (minutes)

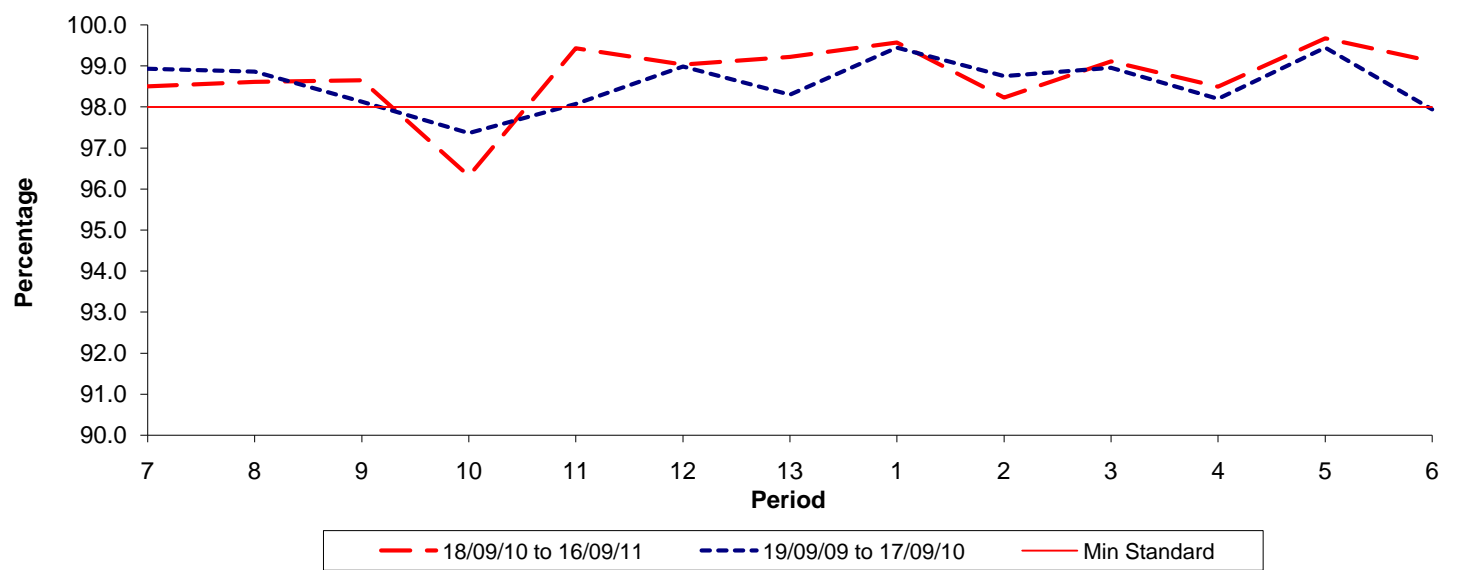


Date Range / Period	7	8	9	10	11	12	13	1	2	3	4	5	6
18/09/10 to 16/09/11	0.65	0.73	0.67	0.71	0.88	0.77	0.67	0.64	0.71	0.70	0.85	0.68	0.62
19/09/09 to 17/09/10	0.64	0.73	0.96	0.94	1.26	1.22	1.15	0.90	0.83	0.71	0.66	0.56	0.57
Min Standard	1.10	1.10	1.10	1.10	1.10	1.10	1.10	1.10	1.10	1.10	1.10	1.10	1.10

Excess Waiting Time figures are based on 12 weeks data

Kilometre Performance

% Kilometres Operated



Date Range / Period	7	8	9	10	11	12	13	1	2	3	4	5	6
18/09/10 to 16/09/11	98.50	98.61	98.65	96.32	99.43	99.03	99.22	99.57	98.23	99.11	98.49	99.67	99.11
19/09/09 to 17/09/10	98.93	98.86	98.13	97.36	98.07	98.99	98.30	99.45	98.75	98.96	98.20	99.45	97.94
Min Standard	98.00	98.00	98.00	98.00	98.00	98.00	98.00	98.00	98.00	98.00	98.00	98.00	98.00

Kilometre figures are based on 4 weeks data